



FARONICS
DEEP FREEZE™

ABSOLUTE System Integrity

DEEP FREEZE SERVER STANDARD EDITION

User Guide



FARONICS™
Intelligent Solutions for ABSOLUTE Control

www.faronics.com

Last modified: December, 2012

© 1999 - 2012 Faronics Corporation. All rights reserved. Faronics, Deep Freeze, Faronics Core Console, Faronics Anti-Executable, Faronics Device Filter, Faronics Power Save, Faronics Insight, Faronics System Profiler, and WINSelect are trademarks and/or registered trademarks of Faronics Corporation. All other company and product names are trademarks of their respective owners.

Contents

Preface	5
Important Information	6
About Faronics	6
Product Documentation	6
Technical Support	7
Introduction	9
System Requirements	10
Installing Deep Freeze	11
Attended Install or Uninstall	12
Attended Install	12
Attended Uninstall	13
Silent Install or Uninstall	15
Silent Install or Uninstall using a Shortcut	16
Install Over Existing Deep Freeze Versions	17
Install Using Imaging	18
Using Deep Freeze	19
Deep Freeze Icons	20
Logon	21
Status Tab	22
Status on Next Boot	22
Clone Options	22
License	22
Password Tab	23
Permanent Software Installations, Changes, or Removals	24



Preface

This user guide explains how to install, configure and use Deep Freeze Server Standard.

Topics

Important Information

Technical Support

Important Information

This section contains important information about your Faronics Product.

About Faronics

Faronics delivers market-leading solutions that help manage, simplify, and secure complex IT environments. Our products ensure 100% machine availability, and have dramatically impacted the day-to-day lives of thousands of information technology professionals. Fueled by a market-centric focus, Faronics' technology innovations benefit educational institutions, health care facilities, libraries, government organizations, and corporations.

Product Documentation

The following documents form the Deep Freeze Server Standard documentation set:

- *Deep Freeze Server Standard User Guide* — This document guides you how to use the product.
- *Deep Freeze Server Standard Release Notes* — This document lists the new features and known issues and closed issues.

Technical Support

Every effort has been made to design this software for ease of use and to be problem free. If problems are encountered, contact Technical Support.

Technical Support: www.faronics.com/support

Web: www.faronics.com



Introduction

Faronics Deep Freeze helps eliminate computer damage and downtime by making computer configurations indestructible. Once Deep Freeze is installed on a computer, any changes made to the computer—regardless of whether they are accidental or malicious—are never permanent. Deep Freeze provides immediate immunity from many of the problems that plague computers today—inevitable configuration drift, accidental system misconfiguration, malicious software activity, and incidental system degradation.



Deep Freeze protects the computers that are set to boot from the hard drive. Configure the CMOS to boot from the hard drive only. The CMOS must be password protected to prevent unauthorized changes. Deep Freeze protects the Master Boot Record (MBR) when the computer is Frozen.

Topics

System Requirements

System Requirements

Deep Freeze Server Standard is supported on:

- Windows Server 2003, 2003 R2, 2008, 2008 R2 and 2012
- 32 and 64 bit versions are supported
- Faronics recommends a minimum of 512 MB of system memory in the protected systems
- Deep Freeze requires 10% of the hard drive to be left as free space

Installing Deep Freeze

This chapter describes the installation process.

Topics

[Attended Install or Uninstall](#)

[Silent Install or Uninstall](#)

[Silent Install or Uninstall using a Shortcut](#)

[Install Over Existing Deep Freeze Versions](#)

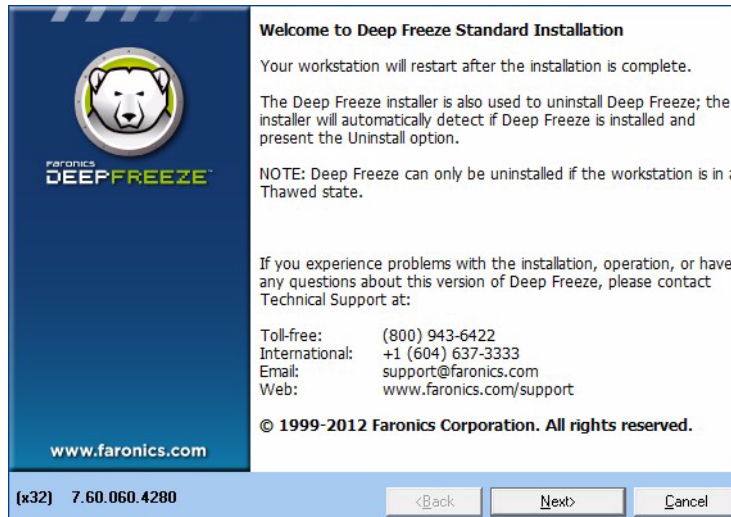
[Install Using Imaging](#)

Attended Install or Uninstall

Attended Install

Complete the following steps to perform an attended install.

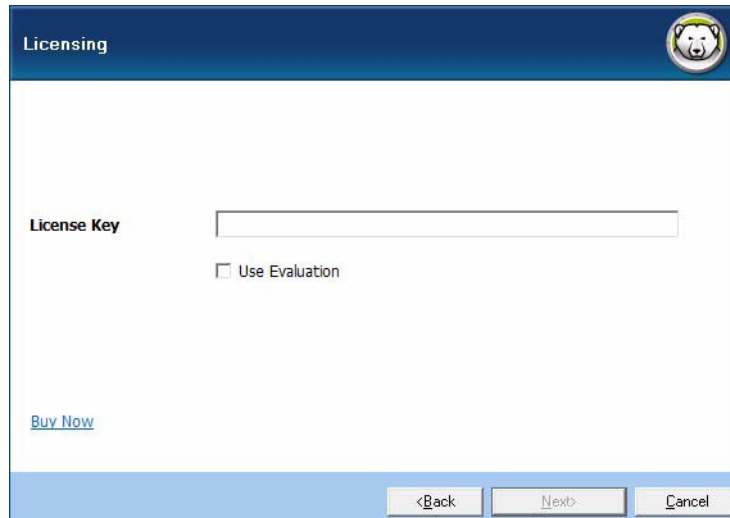
1. Double-click *DFStdServ.exe* to begin the installation process. The following screen appears:



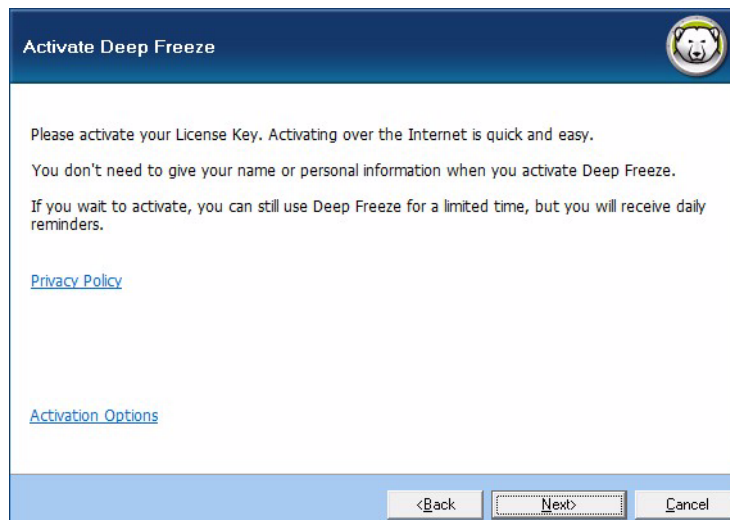
2. Click *Next*. Click *I agree to the terms in the License Agreement*. Click *Next*.



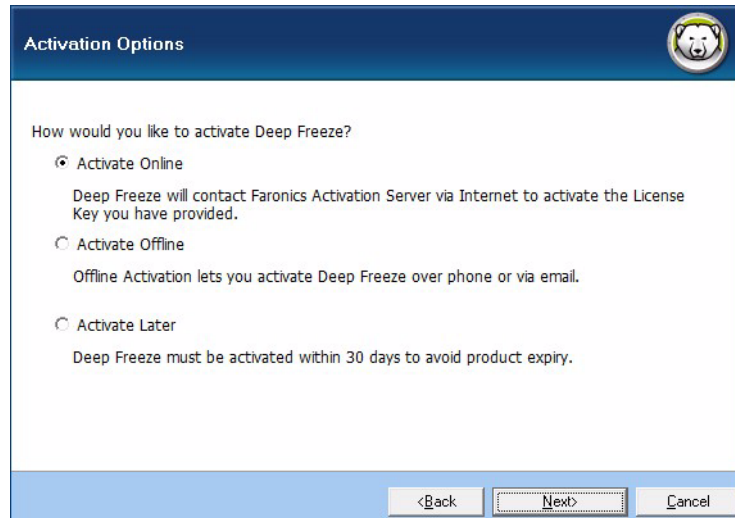
3. Enter the License Key or select the *Use Evaluation* check box to install Deep Freeze in Evaluation mode. The Evaluation period ends 30 days after installation. Contact Faronics to purchase a License Key.



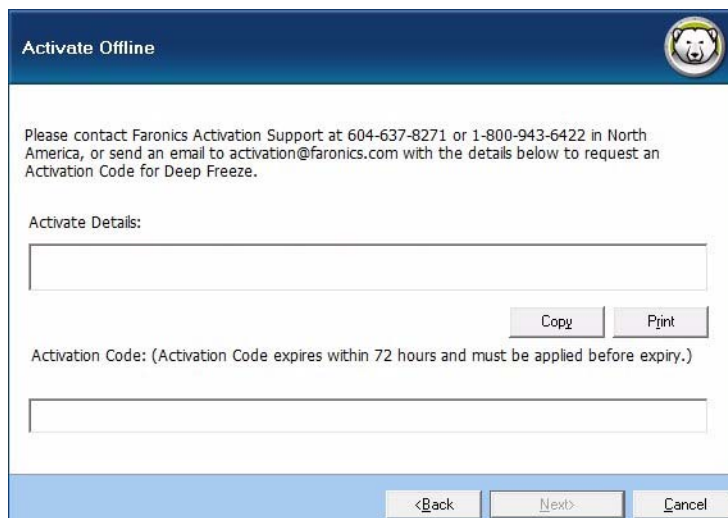
4. Click Next to view activation options. Click *Next* again to activate Deep Freeze License via the Internet. The computer must be connected to the Internet to Activate Online. Deep Freeze License must be activated within 30 days of installation failing which Deep Freeze will stop functioning. During activation, Deep Freeze License is authenticated with Faronics.



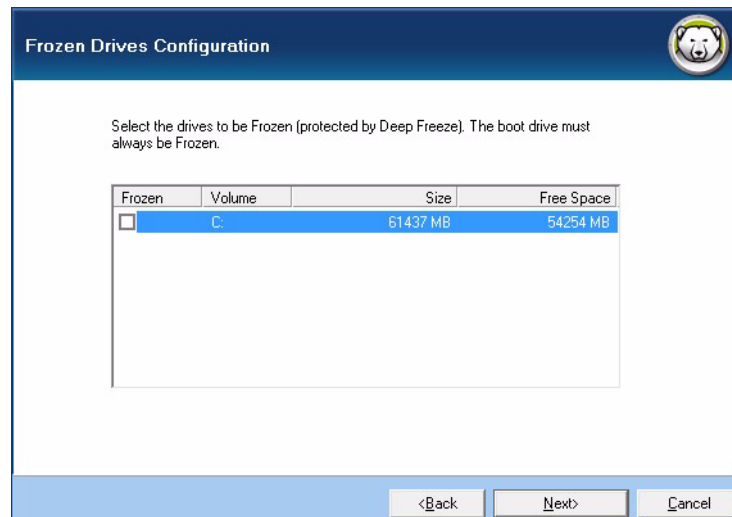
5. Alternatively, click *Activate Options*. Three options are available:



- Select *Activate Online* to activate Deep Freeze License online. This option is same as step 4. Click *Next* after selecting this option. Deep Freeze is activated online on clicking *Next*.
 - Select *Activate Offline*. This option allows you to activate by phone or email. Click *Next* after activating. The *Activate Offline* screen is displayed.
 - Select *Activate Later*. This option allows you to activate later.
6. If you selected *Activate Offline*, send the License Key and Installation ID to Faronics Activation Support via phone or email. Once you receive the Activation Code from Faronics, enter it in the *Activation Code* field and click *Next*. Deep Freeze Licence is now activated.



7. Choose the drives to Freeze from the displayed list. Click *Next*.



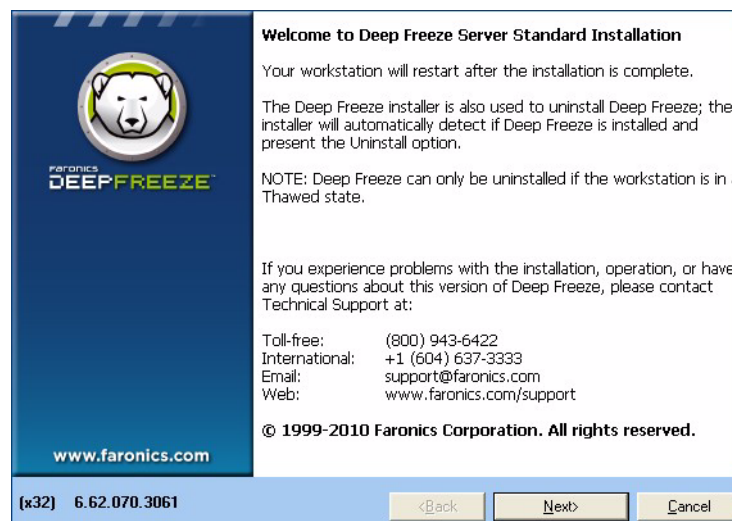
8. Click *Install* to begin the installation.

The computer restarts immediately after the installation is complete.

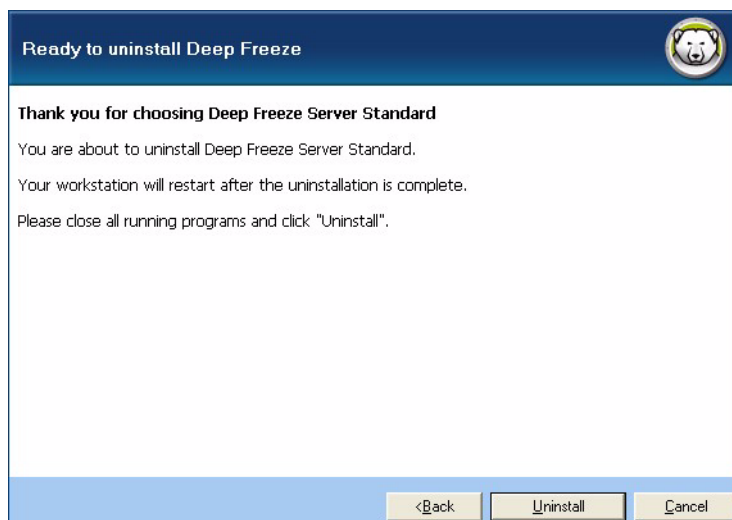
Attended Uninstall

Complete the following steps to perform an attended uninstall.

1. Double-click *DFStdServ.exe* to begin the uninstall process. The following screen appears:



2. Click *Next*. Click *Uninstall*.



The computer restarts immediately after the uninstall is complete.

Silent Install or Uninstall

Deep Freeze can be rapidly installed on multiple computers over a network using the Silent Install feature. Deep Freeze can also be uninstalled in the same manner. Any deployment utility that allows execution of a command line on a remote computer can implement Silent Install or Uninstall. After the Silent Install or Uninstall is complete, the system restarts immediately.

The command line has the following options:

Syntax	Description
<code>[/Install]</code>	Install Deep Freeze using installation file
<code>[/Uninstall]</code>	Uninstall Deep Freeze
<code>[/PW=password]</code>	Set a password during installation
<code>[/AllowTimeChange]</code>	Allow system clock to be changed
<code>[/Freeze=C,D,...]</code>	Freeze only drives listed (Thaw all others)
<code>[/Thaw=C,D,...]</code>	Thaw only drives listed (Freeze all others)

Example Command Line:

```
DFStdServ.exe /Install /Freeze=C /PW=password
```

In the above example, only the C: drive is Frozen. Any other drives on the computer are Thawed. If the computer only has a C: drive, the `[/Freeze]` switch can be omitted. A password (password) is created. After executing the command, Deep Freeze installs and the computer restarts Frozen.



The Silent Install or Uninstall does not work without the `[/Install]` or `[/Uninstall]` switch.



Deep Freeze must be in a Thawed state before `[/Uninstall]` can be used.

Silent Install or Uninstall using a Shortcut

Deep Freeze can be installed (or uninstalled) directly on a computer without having to use the installation dialog box by completing the following steps.

1. Locate the Deep Freeze installation file (*DFStdServ.exe*).
2. Right-click on the icon and choose *Create Shortcut*. Save the shortcut to the desktop.
3. Right-click on the shortcut and choose *Properties*.
4. Edit the path of the *Target* field by typing `/install` or `/uninstall` at the end of the path.

Example Shortcut Target:

```
E:\Deep Freeze Install File\DFStdServ.exe /install
```

Double-clicking the new shortcut results in the immediate installation or uninstallation of Deep Freeze, followed by a restart of the computer.



Deep Freeze must be in a Thawed state before `/uninstall` can be used.

Install Over Existing Deep Freeze Versions

All existing Deep Freeze versions must be uninstalled prior to performing any new Deep Freeze installation.

Install Using Imaging

Deep Freeze has been designed to work with all major imaging and desktop management software. Use either an Attended Install or the Silent Install to install Deep Freeze on a master image.

Deep Freeze must be prepared for deployment before finalizing a master image. To prepare the master image for deployment complete the following steps:

1. Restart the computer into a *Thawed* state.
2. Launch Deep Freeze using the keyboard shortcut *CTRL+SHIFT+ALT+F6*. Alternatively, press *SHIFT* and double-click the Deep Freeze icon in the System Tray.
3. Enter the password and click *OK*.
4. Click *Set Flag* in the *Status* tab.
5. The message *The flag has been set successfully. Do you want to reboot your computer now?* is displayed. Click *Yes* to reboot the computer immediately. Click *No* to reboot the computer later.

After imaging, the computers require an additional restart for Deep Freeze to correctly detect the changes in disk configuration. If the computers are imaged in an unattended mode, steps should be taken to ensure the computers are restarted to allow the configuration to update.

Using Deep Freeze

Topics

[Deep Freeze Icons](#)

[Logon](#)

[Status Tab](#)

[Password Tab](#)

[Permanent Software Installations, Changes, or Removals](#)

Deep Freeze Icons

The Frozen or Thawed Deep Freeze icon appears in the System Tray after installation and indicates whether the computer is currently protected by Deep Freeze (Frozen) or unprotected (Thawed).

When the computer is Frozen, the following icon is displayed in the System Tray:



When the computer is Thawed, the following icon is displayed in the System Tray:



Logon

Complete the following steps to logon to Deep Freeze:

1. Press SHIFT and double-click the Deep Freeze icon in the System Tray. Alternatively, use the keyboard shortcut CTRL+SHIFT+ALT+F6. The following dialog is displayed.



2. Enter the administrator password and click *OK* to logon to Deep Freeze. If no password has been set, leave the password field blank and click *OK*.



As an additional security feature, Deep Freeze prevents brute force attacks by automatically restarting the computer after 10 unsuccessful attempts.

3. Click *Activate Online* to activate Deep Freeze License via the Internet. The computer must be connected to the Internet to Activate Online. The Deep Freeze License must be activated within 30 days of installation failing which Deep Freeze will stop functioning. During activation, the Deep Freeze License is authenticated with Faronics.
4. Alternatively, click *Activate Options*. Two options are available:

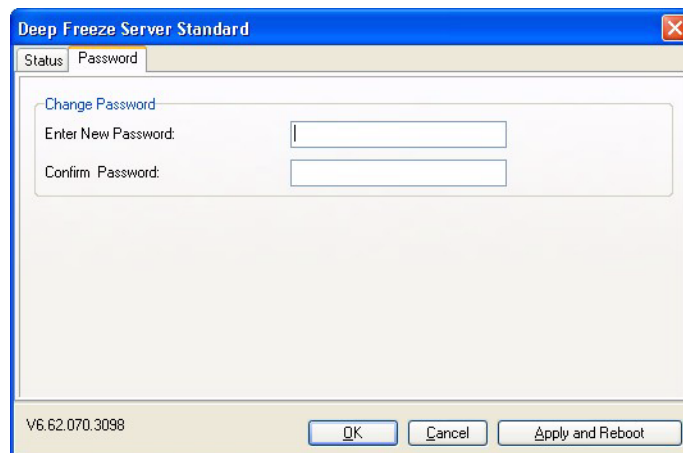


- Select *Activate Online* to activate Deep Freeze License online. This option is same as step 1. Click *Next* after selecting this option. Deep Freeze is activated online on clicking *Next*.
 - Select *Activate Offline*. This option allows you to activate by phone or email. Click *Next* after activating. The Activate Offline screen is displayed.
5. Send the *Activate Details* to Faronics Activation Support via phone or email. Once you receive the Activation Code from Faronics, enter it in the *Activation Code* field and click *Next*. Deep Freeze Licence is now activated.



Password Tab

The *Password* tab is used to set a new password or change the password that was used to logon to Deep Freeze.



1. Enter a new password, confirm the new password, and click *OK* to set the password.
2. The following message is displayed.



3. Click *OK*.

Permanent Software Installations, Changes, or Removals

Computers must be Thawed for any permanent changes to take effect. Installation of software often requires one or more restarts to complete the installation.

Deep Freeze helps administrators overcome challenges with maintaining the configuration of their computers in a production environment. Deep Freeze protects computers from unauthorized changes, viruses and malware, that can leave computers in a non-functional state. Deep Freeze also provides features to retain user data while protecting the computer.

For more information on how to implement Deep Freeze and ensure that the user data is retained, refer to *Deep Freeze - Retaining User Data* available at <http://www.faronics.com/library>

