

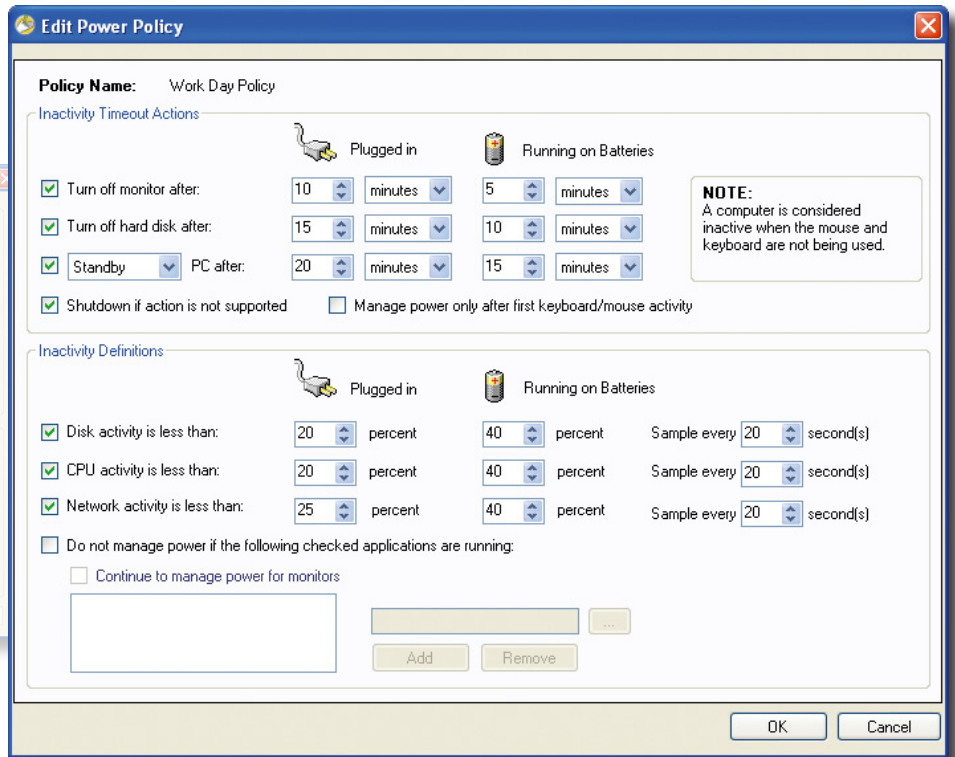
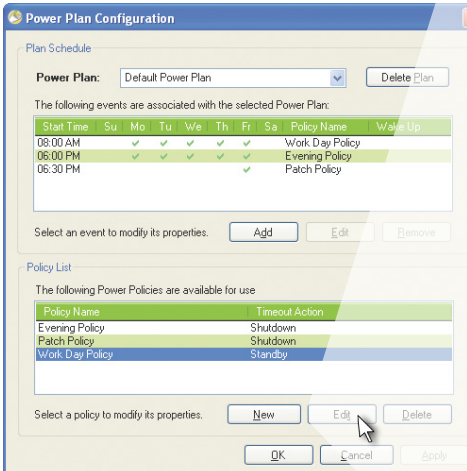


FARONICS POWERSAVE™

Automated Energy Conservation Power Save Benefits

Faronics Power Save dramatically reduces an organization's operating costs by eliminating unnecessary computer energy consumption. In fact, for every 1,000 computers Faronics Power Save is deployed on, organizations will save up to \$50,000 per year. Faronics Power Save keeps computers running when users need them, powers them down when they are inactive, and can prove its rapid return-on-investment through energy savings reports. Power Save is also non-disruptive—it analyzes CPU, disk, network, keyboard, mouse, and application status before taking power management actions.

- Computer energy management that is non-disruptive to IT and end-users
- Provides tangible financial savings to organizations by reducing computer power consumption
- Proves rapid return-on-investment through enterprise-wide tracking and reporting
- Strengthens IT control over network systems while promoting user productivity at all times
- Fosters feasible environmental responsibility that is easy to deploy and manage



Power Plans allow you to schedule different levels of energy management to be applied on specific days of the week and at different times of the day. For example, organizations can now use a daytime Power Policy that employs moderate energy saving actions and an aggressive Power Policy for the weekend.

Key Features

Intelligent Configuration Settings

- Inactivity definitions can be based on multiple criteria
- Recognizes and accommodates Deep Freeze maintenance schedules
- Notify users before Power Save takes action
- Saves open documents, spreadsheets, presentations, and email drafts, prior to powering down
- Option to logoff user prior to computer powering down
- Stay awake option temporarily disables PC power management
- Schedule and customize local wake-ups

Customized Inactivity Definitions

- Employ energy saving actions when CPU, network, or disk activity falls below a defined level
- Prevent workstations from employing power saving actions when a specified application is running
- Power down hard disks to reduce energy consumption
- Activity generated by programs in the non-critical applications list will be ignored

Enterprise Power Management

- Override a workstation's operating system power settings
- Create Energy Consumption Profiles to match individual workstation power use
- With the Power Plan Assistant, easily create Power Plans and Policies to allow for different levels of energy management at different times
- Easily duplicate and edit existing Power Plans, and automatically synchronize changes to Power Plans or Policies across deployments

Enterprise Control

- Deployment through Faronics Core or third party desktop management tools
- Create workstation groups based on user-defined parameters, such as departments, physical locations, and user groups
- Wake-up workstations via a web browser

Flexible Scheduling

- Turn off monitors, and sleep, hibernate or shutdown computers
- Schedule Wake-On-LAN or Wake-Without-LAN, shutdown, or restart events
- Schedule Power Save configuration updates
- Schedule maintenance windows when Power Save won't enforce energy management policies
- Schedule local wake-up from Hibernate or Standby mode

Savings Reports

- Generate energy use and savings reports through Faronics Core
- Summary and detailed reports display power savings based upon your regional electricity cost in your local currency
- Audit Mode provides a baseline measure of consumed energy and shows projected savings during full operation mode
- Reports related environmental benefits from reduced energy use
- Reports on best/worst energy savers, and power saving history

"We've deployed Power Save enterprise-wide on all our workstations, which is saving us over \$50,000 per year in energy costs. That's \$50,000 that we now have to buy new IT equipment and software, hire more personnel, or invest into employee training."

- Sung Lee, Director of Computer Support, Howard Community College



Full Operation Report: 4/1/2010 to 4/30/2010

Report Summary:
 Report created: Fri, Apr 30, 2010 4:23 PM
 Number of workstations: 909
 Average Savings: \$7.13
 Total Energy Consumed: \$1,814.20 kWh
 Total Cost Of Energy Consumed: \$5,324.83
 Total Energy Savings: \$6,028.00 kWh
 Total Projected Annual Savings: \$60,209.57
 Total Currency Savings: \$5,703.22

The energy saved by powering down your 909 computers is equivalent to:
 • Renewing 15.6 tons of CO₂ from the atmosphere
 • Planting 8.1 acres of forest
 • Conserving 62.0 barrels of oil
 • Taking 6.5 cars off the road

Source: EPA calculations

Name	Monitor (watts)	Monitor Standby (watts)	Computer On (watts)	Computer Standby (watts)	Energy Used (% / kWh)	Workstation Count	Energy Saved (kWh)	Savings (\$)
Dell 1701 + Dell 30"	142	16	163	4	11.4	101	10513.79	\$1,108.58
Dell E110 + Viewsonic 21"	50	15	117	7	11.4	105	4692.18	\$510.17
Dell E510 + Dell 30"	142	16	159	2	11.4	133	17102.33	\$1,726.60
Dell E510 + Nokia 21"	164	20	165	1	11.4	72	6644.45	\$737.66
Dell G520 + Viewsonic 21"	50	15	127	5	11.4	189	10569.92	\$1,204.97
Dell XPS M1210	20	4	56	5	11.4	100	2446.76	\$276.95
IBM X60s ThinkPad	25	4	65	15	11.4	100	3091.66	\$352.43

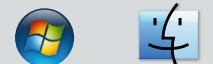
Name	IP Address	MAC Address	Workstation Group	Monitor Standby (days)	Computer Standby (days)	Computer Off (days)	Energy Savings (kWh)	Energy Consumed (kWh)	Savings (\$)
023-CAMP2-LAB2-27	172.16.10.63	00-15-F2-68-44-44	Dell 1701 + Dell 30"	26.2	0.0	22.7	195.68	201.66	\$19.00
073-CAMP164-LAB6-13	172.16.210.115	00-0E-0C-7D-42	Dell E110 + Viewsonic 21"	26.2	0.0	25.7	91.070	102.73	\$10.38
083-CAMP134-LAB11-25	172.12.82.75	00-07-E8-03-8E-70	Dell E510 + Dell 30"	15.4	0.0	15.0	93.29	106.12	\$10.64
125-CAMP22-LAB1-85	172.20.173.214	00-0F-1F-E3-93-09	Dell E510 + Nokia 21"	26.0	0.0	25.3	152.73	177.29	\$17.41
023-CAMP6-C13-20	172.16.120.67	00-0C-93-71-23-6D	Dell G520 + Viewsonic 21"	27.2	0.0	26.8	104.51	117.27	\$11.91
795-011-CAMP1-LAB1-15	172.18.3.141	00-13-20-44-09-74	Dell 1701 + Dell 30"	25.3	0.0	25.1	173.67	194.99	\$19.00
063-CAMP6-09M1-01	172.35.130.03	00-3C-20-3E-3C-37	IBM X60s ThinkPad	22.2	0.0	21.7	45.07	59.48	\$5.14
073-CAMP-0110-19	172.23.184.198	00-0C-3E-9F-0E-16	Dell XPS M1210	170.0	0.0	11.5	29.76	51.49	\$5.30
075-CAMP6-LAB1-08	172.11.14.215	00-0B-71-84-3F-F3	Dell G520 + Viewsonic 21"	26.4	0.0	26.5	100.75	117.05	\$11.40
194-CAMP6-LAB1-06	172.11.86.100	00-0F-10-6C-37-18	Dell G520 + Viewsonic 21"	27.7	0.0	26.8	104.51	117.30	\$11.61
800-024-CAMP16-C1-054	172.20.18.177	00-1F-76-84-8F-07	Dell E510 + Nokia 21"	20.0	0.0	19.4	117.28	176.70	\$11.37
Power Save has Saved 50028.00 kWh of energy and \$5,703.22.									

The values presented in this report are estimates. Time is given in minutes and is based on the workstation status that reported to the console. Savings amounts are calculated based on the user-selected estimates for power usage and electricity cost.

System Requirements

The Power Save client computer requires Windows 2000 SP4, Windows XP SP3, Windows Vista and Windows 7. Faronics Core system requirements can be found in the Faronics Core user guide. It is highly recommended that all components be installed using a Windows Administrator account.

Available for:



FARONICS™

Intelligent Solutions for **ABSOLUTE** Control

- | | | |
|---|--|---|
| <p>❖ Canada/International
609 Granville Street, Suite 620
P.O. Box 10362
Vancouver, BC V7Y 1G5</p> | <p>International Tel
+1-604-637-3333</p> <p>sales@faronics.com</p> | <p>International Fax
+1-604-637-8188</p> |
| <p>❖ USA
2411 Old Crow Canyon Road, Suite 170
San Ramon, CA 94583</p> | <p>Toll Free Tel
800-943-6422</p> <p>sales@faronics.com</p> | <p>Toll Free Fax
800-943-6488</p> |
| <p>❖ Europe
Venture House, 2 Arlington Square
Downshire Way, Bracknell, England RG12 1WA</p> | <p>Tel
+44 (0) 1344 741057</p> <p>eurosales@faronics.com</p> | <p>Fax
+44 (0) 1344 741067</p> |

Download

a free, fully functional evaluation copy at

www.faronics.com

For more information on joining our

Partner Program

visit

www.faronics.com/partners