



FARONICS
DEEPFREEZE[™]
STANDARD

ABSOLUTE System Integrity

User Guide



FARONICS[™]
Intelligent Solutions for ABSOLUTE Control

www.faronics.com



Last modified: September, 2011

© 1999 - 2011 Faronics Corporation. All rights reserved. Faronics, Deep Freeze, Faronics Core Console, Faronics Anti-Executable, Faronics Device Filter, Faronics Power Save, Faronics Insight, Faronics System Profiler, and WINSelect are trademarks and/or registered trademarks of Faronics Corporation. All other company and product names are trademarks of their respective owners.



Contents

Preface	5
Important Information	6
About Faronics	6
Product Documentation	6
Technical Support	7
Definition of Terms	8
Introduction	9
Deep Freeze Overview	10
Deep Freeze Editions	10
About Faronics Core Console	10
System Requirements	11
Installing Deep Freeze	13
Installing Deep Freeze	14
Using Deep Freeze	19
Deep Freeze Icons	20
Logon	21
Home Tab	22
Reboot Frozen/Reboot Thawed	22
License	22
Settings Tab	23
Settings Tab > Change Password	23
Settings Tab > Drives Control	24
Settings Tab > Users Data	24
Uninstalling Deep Freeze	27
Uninstalling Deep Freeze	28





Preface

This user guide explains how to install, configure and use Deep Freeze Standard.

Topics

Important Information

Technical Support



Important Information

This section contains important information about your Faronics Product.

About Faronics

Faronics delivers market-leading solutions that help manage, simplify, and secure complex IT environments. Our products ensure 100% machine availability, and have dramatically impacted the day-to-day lives of thousands of information technology professionals. Fueled by a market-centric focus, Faronics' technology innovations benefit educational institutions, health care facilities, libraries, government organizations, and corporations.

Product Documentation

The following documents form the Deep Freeze Standard documentation set:

- *Deep Freeze Standard User Guide* — This document guides you how to use the product.



Technical Support

Every effort has been made to design this software for ease of use and to be problem free. If problems are encountered, contact Technical Support.

- Technical Support: www.faronics.com/support
- Web: www.faronics.com



Definition of Terms

Term	Definition
Frozen	A state of Deep Freeze where any changes, whether malicious or intentional, are reversed on reboot.
Thawed	A state of Deep Freeze where changes made to the computer are permanent and not reversed on reboot.
User Profile	The user profile stores the Windows configuration and preferences of the specific user. The user profile also stores data such as, documents, Internet Favorites, and music.
Boot Drive	The drive from where the Windows Operating System is launched. This is usually the C: drive.



Introduction

Faronics Deep Freeze helps eliminate computer damage and downtime by making computer configurations indestructible. Once Deep Freeze is installed on a computer, any changes made to the computer—regardless of whether they are accidental or malicious—are never permanent. Deep Freeze provides immediate immunity from many of the problems that plague computers today—inevitable configuration drift, accidental system misconfiguration, malicious software activity, and incidental system degradation.



Deep Freeze protects the computers that are set to boot from the hard drive. Deep Freeze cannot protect the computers that are set to boot from an optical drive, USB drive or from a hard drive where Deep Freeze is not installed.

Topics

[Deep Freeze Overview](#)

[System Requirements](#)



Deep Freeze Overview

Deep Freeze protects the boot drive (where the Windows Operating System is installed) and optionally, other drives on your computer. Deep Freeze protects the installed programs when they are installed on the drive protected by Deep Freeze.

Deep Freeze also manages the user profiles on the computer. The user profile stores the Windows configuration and preferences of the specific user. The user profile also stores data such as, documents, Internet Favorites, and music.

Deep Freeze has two states:

- Frozen — where any changes, whether malicious or intentional, are reversed on reboot.
- Thawed — where changes made to the computer are permanent and not reversed on reboot.

Deep Freeze Editions

Deep Freeze has four different editions available. Whether you have servers or workstations, working standalone or as part of a network, Deep Freeze will provide you with the protection that you need. Choose the Deep Freeze edition that best suits your needs:

Edition	Use Deep Freeze to protect
Standard	Local computers loaded with non-server operating system.
Server Standard	Local computers loaded with server operating systems.
Enterprise	Remote computers loaded with non-server operating system.*
Server Enterprise	Remote computers loaded with server operating systems.*

*Enterprise versions allow to protect multiple computers from a central console called Faronics Core Console.

About Faronics Core Console

Faronics Core Console is a lightweight, high performance, secure, easy-to-learn, and integrated framework for the management of multiple Faronics products. It provides a consistent and reliable method of displaying, managing, installing, updating, and protecting workstations and servers from a single console, allowing your organization to increase efficiency with a complete management solution for Faronics products.

Enterprise Versions of Deep Freeze allow you to protect multiple workstations via Faronics Core Console.



System Requirements

Deep Freeze Standard is supported on:

- Windows 7 (32-bit or 64 bit)

It is highly recommended that all components be installed using a Windows Administrator account.





Installing Deep Freeze

This chapter describes the installation process.

Topics

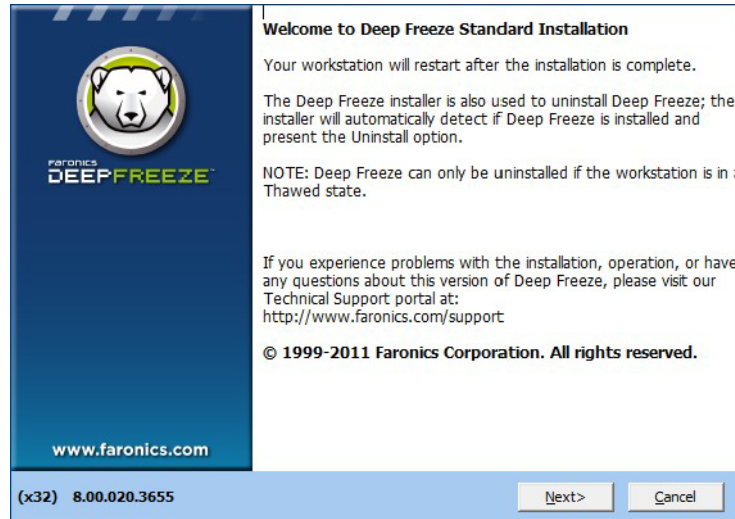
Installing Deep Freeze



Installing Deep Freeze

Complete the following steps to install Deep Freeze.

1. Double-click *DFStd.exe* to begin the installation process. The following screen appears:



2. Click *Next*. Click *I accept the terms in the License Agreement*. Click *Next*.



3. Enter the License Key or select the *Use Evaluation* check box to install Deep Freeze in Evaluation mode. The Evaluation period ends 30 days after installation. Contact Faronics to purchase a License Key.



Licensing

Enter the License Key or select Use Evaluation

License Key

Use Evaluation

Buy Now

<Back Next> Cancel

4. Enter a *New Password* and confirm the password by entering it again. This password protects Deep Freeze from unauthorized changes to the Deep Freeze configuration. Select *Ask for Password when Thawed* to prompt the user with a password dialog when the computer is Thawed. If you do not want a password, leave the password fields blank. Click *Next*.

Password

Deep Freeze must be password protected to prevent unauthorized changes to the Deep Freeze configuration. A lost password cannot be recovered.

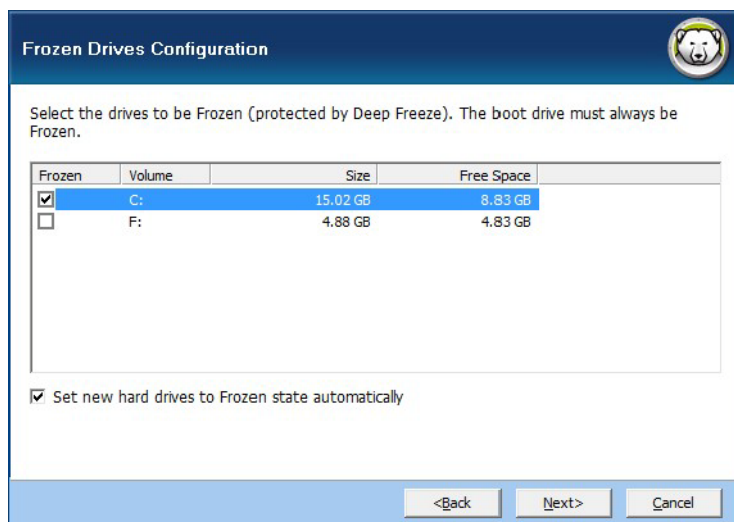
New Password:

Confirm Password:

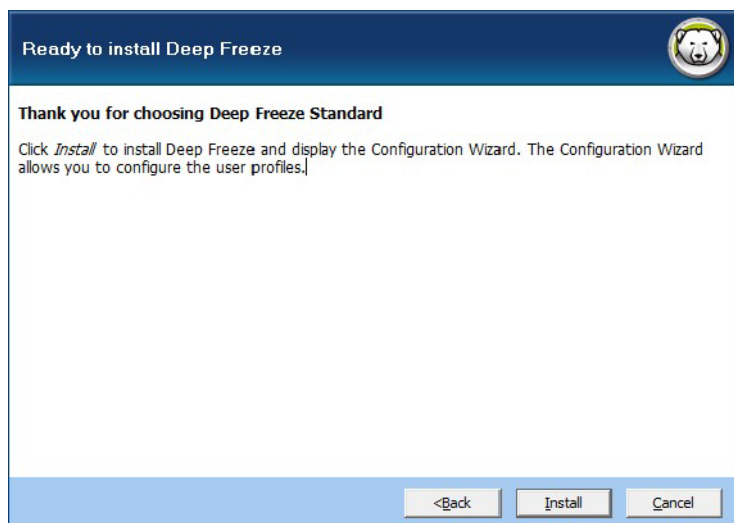
Ask for Password when Thawed

<Back Next> Cancel

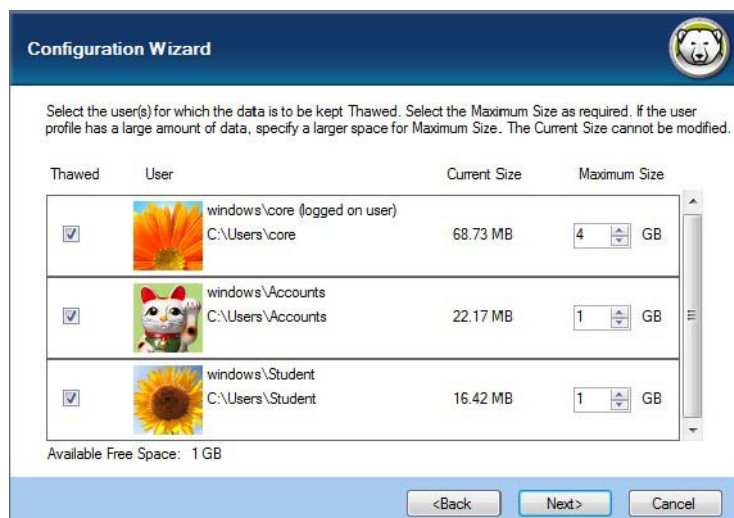
5. Choose the drives to Freeze from the displayed list. The boot drive (the drive where the Operating System is installed) is selected by default and cannot be deselected. Select *Set new hard drives to Frozen* state automatically to ensure that a newly added hard drive is set to a Frozen state automatically. Click *Next*.



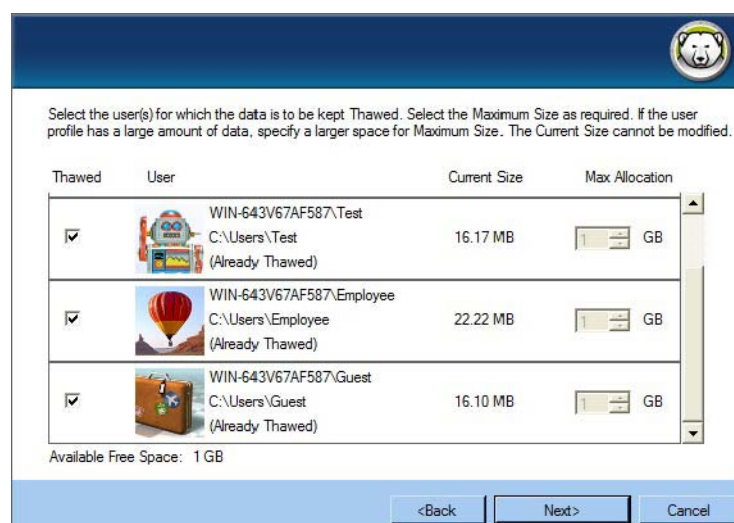
6. Click *Next*. The final screen is displayed. Click *Install*.



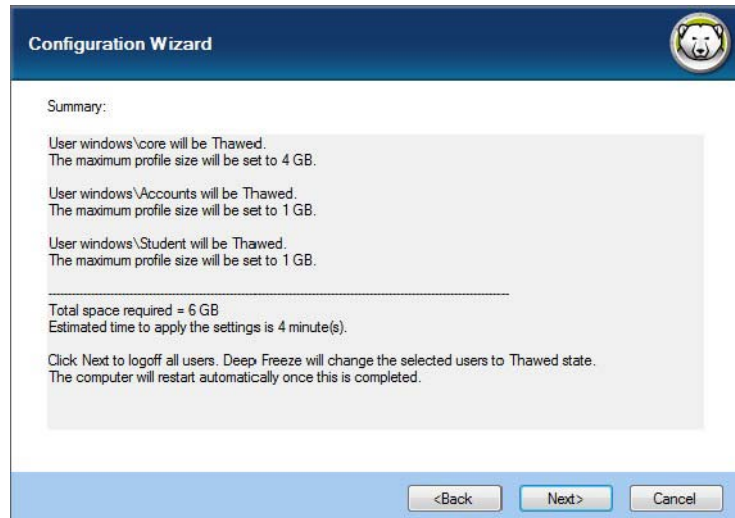
7. After Deep Freeze is installed, the Configuration Wizard is displayed. The Configuration Wizard allows you to configure how Deep Freeze interacts with the user profiles. Select one of the following options and click *Next*:



- **Express** — All user profiles stored on this boot drive will be kept *Thawed*. Any changes to the data or configuration will not be rolled back on reboot. The disk space is allocated automatically be Deep Freeze. Half of the available free space is proportionally allocated to each user profile after subtracting 10% for Deep Freeze operations.
- **Do not configure user profiles** — You can skip configuring the user profiles and configure them later. All user profiles will be *Frozen*.
- **Advanced** — Choose the user profiles stored on the boot drive to be kept *Thawed*. The following screen is displayed only if *Advanced* is selected. Select the values for the following fields
 - **Thawed** - select if this user profile is to be kept *Thawed*. Clear the check box if the user profile is to be *Frozen*.
 - **Current Size** - displays the current size of the user profile.
 - **Max Allocation** - select the maximum allocated size for the user profile.



8. The **Summary** screen will display the list of user profiles and whether they are *Frozen* or *Thawed* along with estimated time for finishing the configuration. The disk space allocated for the *Thawed* user profiles is also displayed. Click **Next** to reboot the computer into *Frozen* state.



The computer applies the settings to all user profiles. At this stage, you will not be able to logon to your computer. The computer restarts when all the settings are applied.



Using Deep Freeze

This chapter describes the procedure to access, configure, and use Deep Freeze Standard.

Topics

Deep Freeze Icons

Logon

Home Tab

Settings Tab



Deep Freeze Icons

The Frozen or Thawed Deep Freeze icon appears in the System Tray after installation and indicates whether the computer is currently protected by Deep Freeze (Frozen) or unprotected (Thawed).

When the computer is Frozen, the following icon is displayed in the System Tray:



When the computer is Thawed, the following icon is displayed in the System Tray:

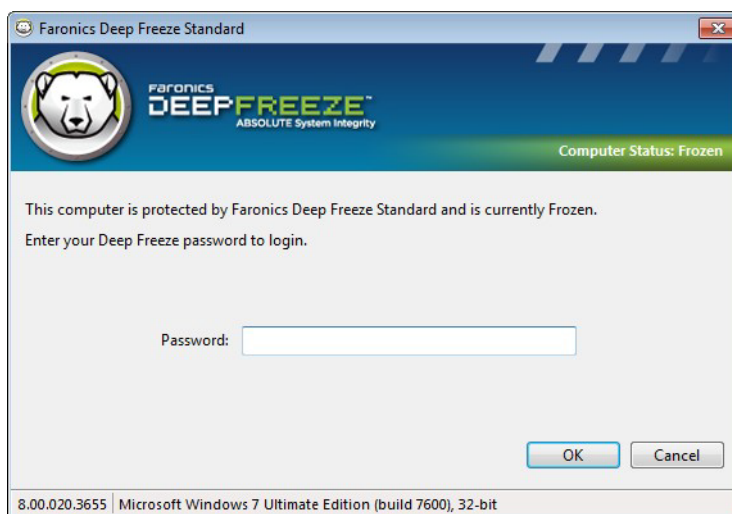




Logon

Complete the following steps to logon to Deep Freeze:

1. Double-click the Deep Freeze icon in the System Tray. Alternatively, use the keyboard shortcut CTRL+SHIFT+ALT+F6. The following dialog is displayed.



2. Enter the administrator password and click *OK* to logon to Deep Freeze. If no password has been set, Deep Freeze is launched without the logon screen.

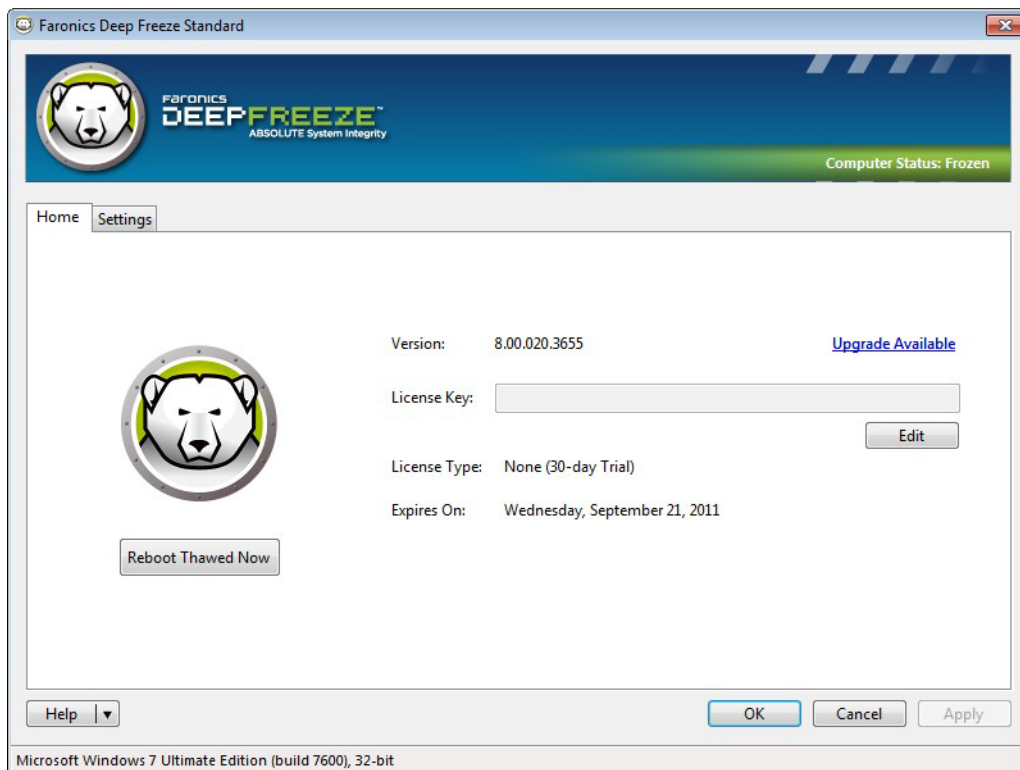


As an additional security feature, Deep Freeze automatically restarts the computer after 10 unsuccessful attempts.



Home Tab

The *Home* tab is used to Reboot Frozen, Reboot Thawed, and update the License Key.



Reboot Frozen/Reboot Thawed

- Click *Reboot Frozen Now* to ensure the computer is Frozen the next time it is restarted. The computer reboots immediately.
- Click *Reboot Thawed Now* to ensure the computer is Thawed the next time it is restarted. The computer reboots immediately.



Alternatively, you can right-click on the Deep Freeze icon in the system tray and select *Reboot Frozen Now* or *Reboot Thawed Now*. If you have set a password, you must enter it before the command is executed.

License

1. To update the License Key, click *Edit* and enter the License Key in the *License Key* field.
2. Click *Update License*.

This converts Deep Freeze from the *Evaluation* version to a *Licensed* version. The *License Type* field displays the type of license. The *Expires On* field displays the date when the license expires.



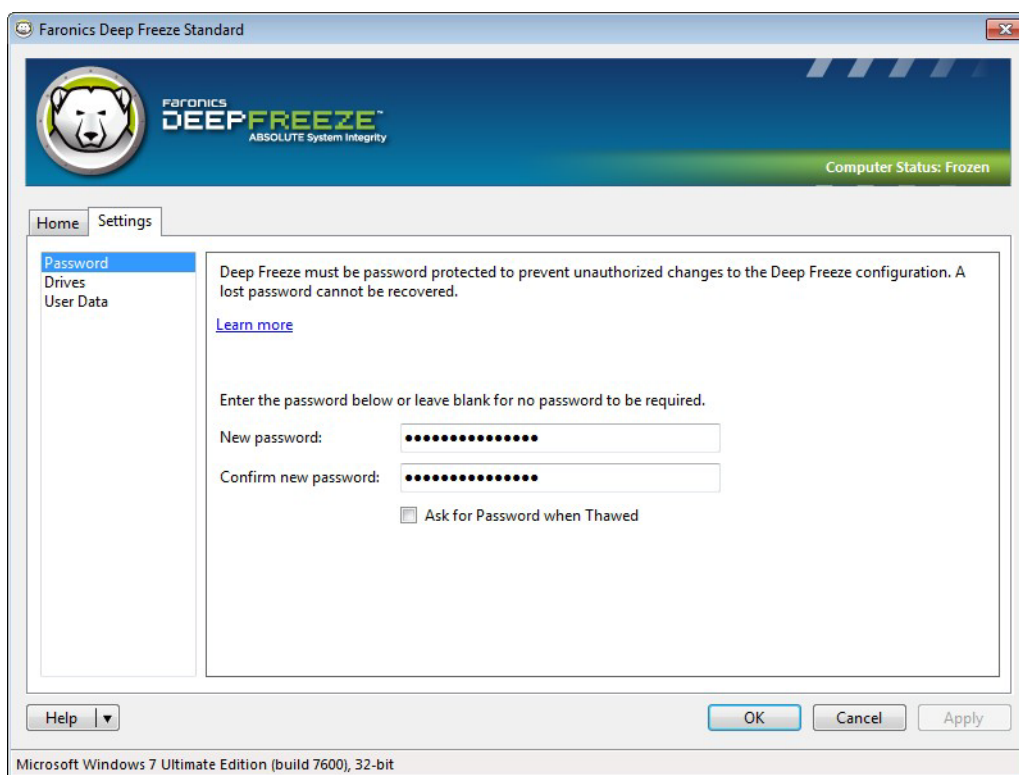
Settings Tab

The *Settings* tab provides the following functionality:

- Change Password
- Drives Control
- Users Data

Settings Tab > Change Password

The Change Password screen allows you to change the password for Deep Freeze.



Complete the following steps to change the password:

1. Enter a new password and confirm the new password.
2. Select *Ask for Password when Thawed* to prompt the user with a password dialog when the computer is Thawed.
3. Click *OK* to set the password.

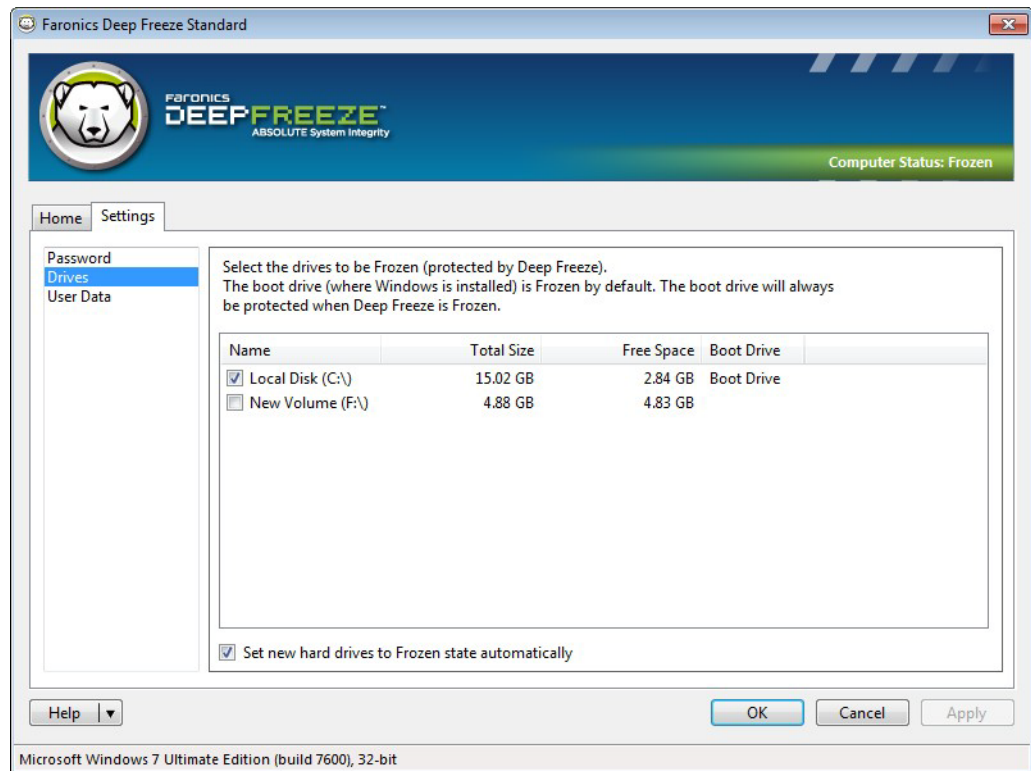


Deep Freeze can be used without a password. However, setting a password is recommended. Deep Freeze must be password protected to prevent unauthorized changes.



Settings Tab > Drives Control

The Drives Control screen allows you to set the drives as Frozen (protected) or Thawed (unprotected). The boot drive (where the Windows operating system is installed) is always Frozen when Deep Freeze is in a Frozen state.



Complete the following steps to set the drives as Frozen or Thawed when Deep Freeze is in a Frozen state:

1. Set the drive to *Frozen* or *Thawed*:
 - Select the drive check box to be *Frozen*.
 - Clear the drive check box to be *Thawed*.
2. Select *Set new hard drives to Frozen* state automatically to ensure that a newly added hard drive is set to a Frozen state automatically.
3. Click *Apply*.

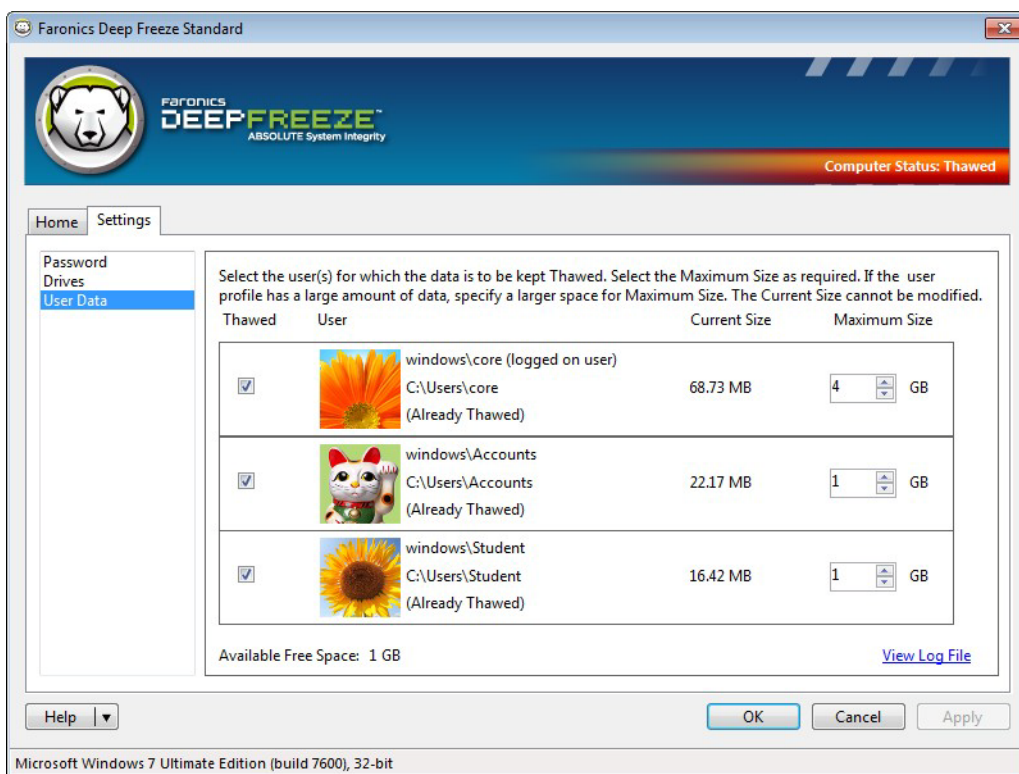
The computer enter into a Frozen or Thawed state only after a reboot.

Settings Tab > Users Data

The Users Data screen allows you to set the user profiles as Frozen or Thawed. You can also increase or decrease the *Maximum size* of the Frozen or Thawed user profile.



If a new user profile has just been created, logon to each user profile once, logoff and reboot the computer before setting the user profile Thawed. This is to ensure no files in the new user profile is being used by Windows.



Complete the following steps to change the settings for the user profiles:

1. Reboot the computer to *Thawed* state.
2. Go to *Settings Tab > Users Data*.
3. Select values for the following fields:
 - *Thawed* - select if this user profile is to be kept *Thawed*. Clear the check box if the user profile is to be *Frozen*.
 - *Current Size* - displays the current size of the user profile. The Current Size is based on the amount of data in the user profile and this cannot be modified on this screen.
 - *Max Allocation* - select the maximum allocated size for the user profile.
4. Click *Apply*. Click *OK*.

Deep Freeze reboots the computer immediately to apply the new settings. The computer applies the settings to all user profiles. At this stage, you will not be able to logon to your computer. The computer restarts when all the settings are applied.

You have an option to reboot the computer later, but the changes will not take effect unless the computer is rebooted.

Log File

The View Log File in the bottom right corner of the Users Data screen launches the Deep Freeze log file. The log file has information about errors or exceptions that occur while using Deep Freeze.



Click *View Log File* to launch the Deep Freeze Log file.



The log file is for advanced users only. The log file contains technical information about errors, exceptions, notifications and other technical information that can be interpreted only by technical users or system administrators.



Uninstalling Deep Freeze

This chapter describes the uninstall process.

Topics

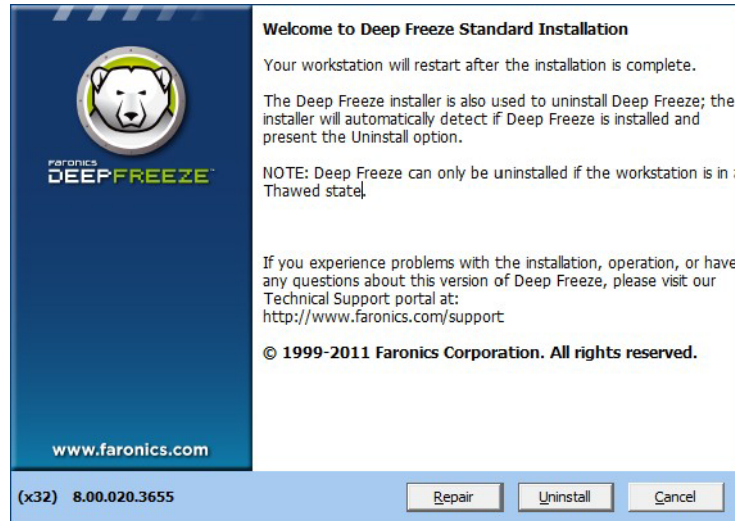
Uninstalling Deep Freeze



Uninstalling Deep Freeze

Complete the following steps to uninstall Deep Freeze.

1. Double-click *DFStd.exe* to begin the uninstall process. The following screen is displayed:



2. Click *Uninstall*. Deep Freeze is uninstalled and the computer reboots.



Reboot the computer to Thawed before uninstalling Deep Freeze. It is recommended change all the user profiles to Frozen state before uninstalling Deep Freeze.