



Deep Freeze and Microsoft System Center Configuration Manager Integration

Last modified: October 31, 2008

Intelligent Solutions for **ABSOLUTE** Control

www.faronics.com

Tel: 1-800-943-6422 • Fax: 1-800-943-6488

Tel: +1-604-637-3333 • Fax: +1-604-637-8188

© 1999 – 2008 Faronics Corporation. All rights reserved. Faronics, Faronics Anti-Executable, Deep Freeze, Deep Freeze Mac, Deep Freeze Linux, Faronics Device Filter Mac, Faronics Insight, Faronics Power Save, Faronics Power Save Mac, Faronics System Profiler, and WINSelect are trademarks and/or registered trademarks of Faronics Corporation.

All other company and product names are trademarks of their respective owners.

Deep Freeze and Microsoft System Center Configuration Manager Integration

Introduction

This white paper explains the procedure to integrate Microsoft System Center Configuration Manager with Deep Freeze. Deploying a Deep Freeze installation file from the Configuration Manager Console is also explained further in this document.

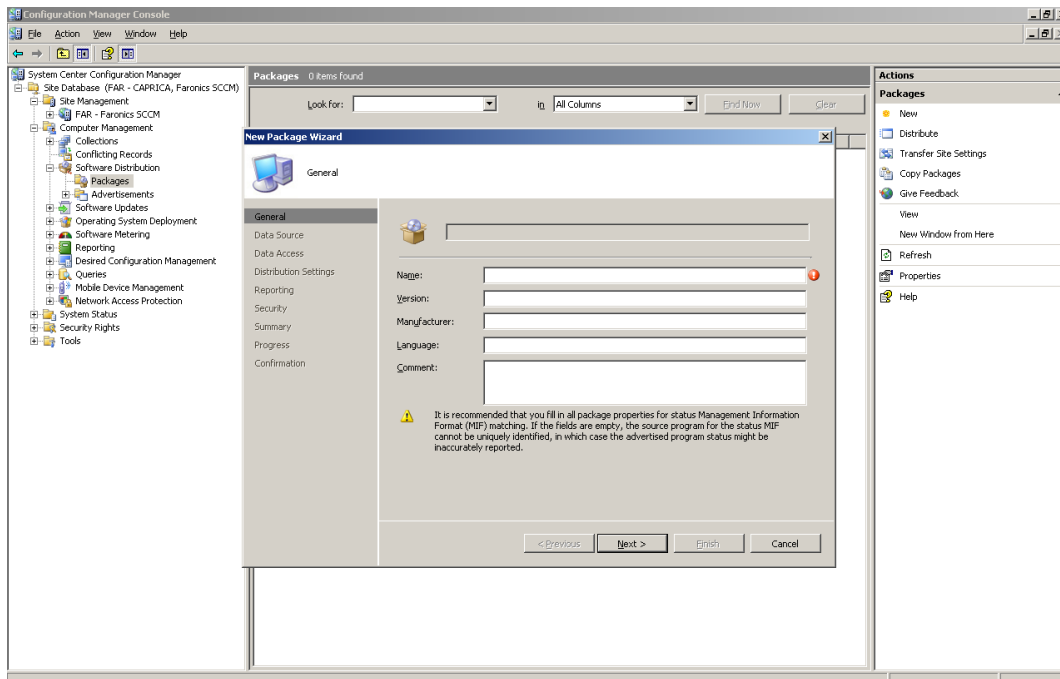
Requirements

Integration of Deep Freeze with Configuration Manager requires a fully configured site server for software distribution. The Configuration Manager client must be installed on the client workstations.

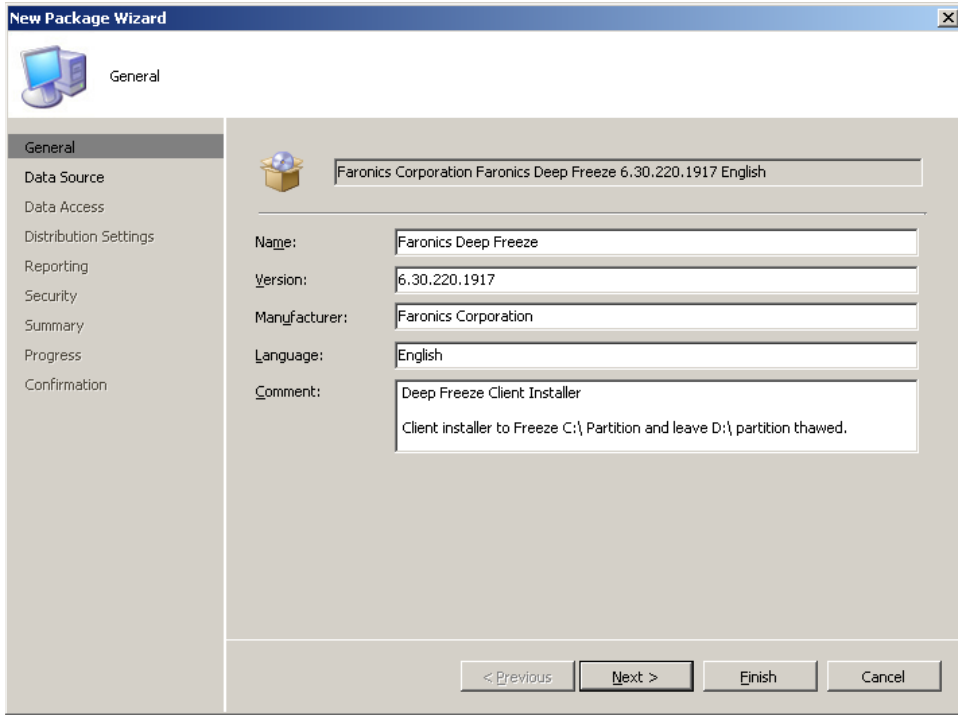
Create a Package for Deploying Deep Freeze

To create a new package in the Configuration Manager Console, complete the following steps:

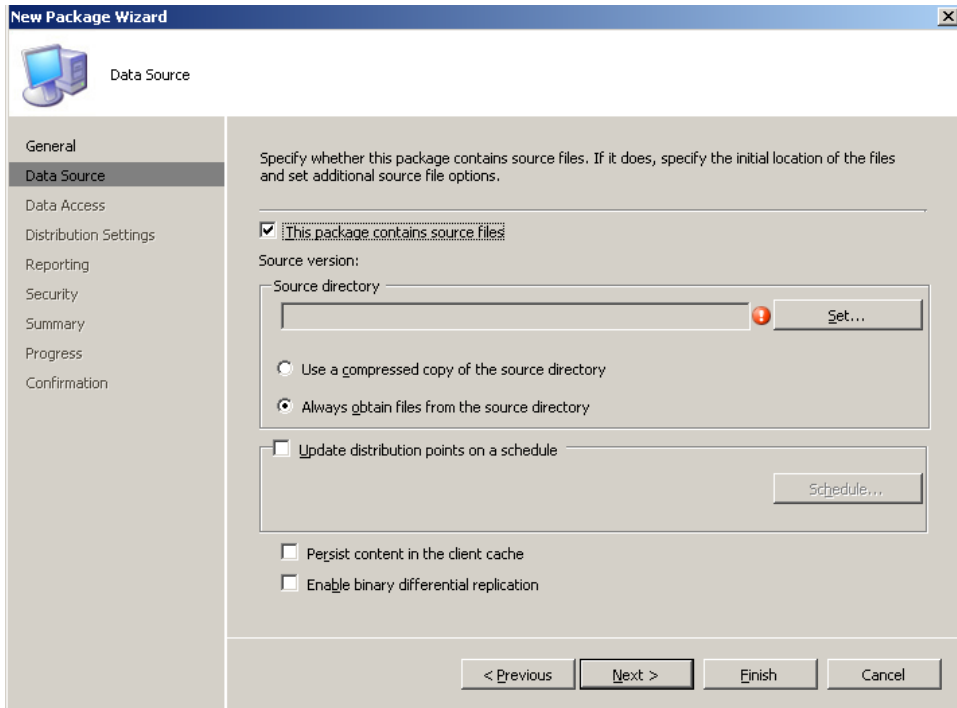
1. Open the Configuration Manager Console and navigate to *Database>Computer Management>Software Distribution>Packages*.
2. On the *Actions* pane, click *New>Package* to display the *New Package Wizard*.



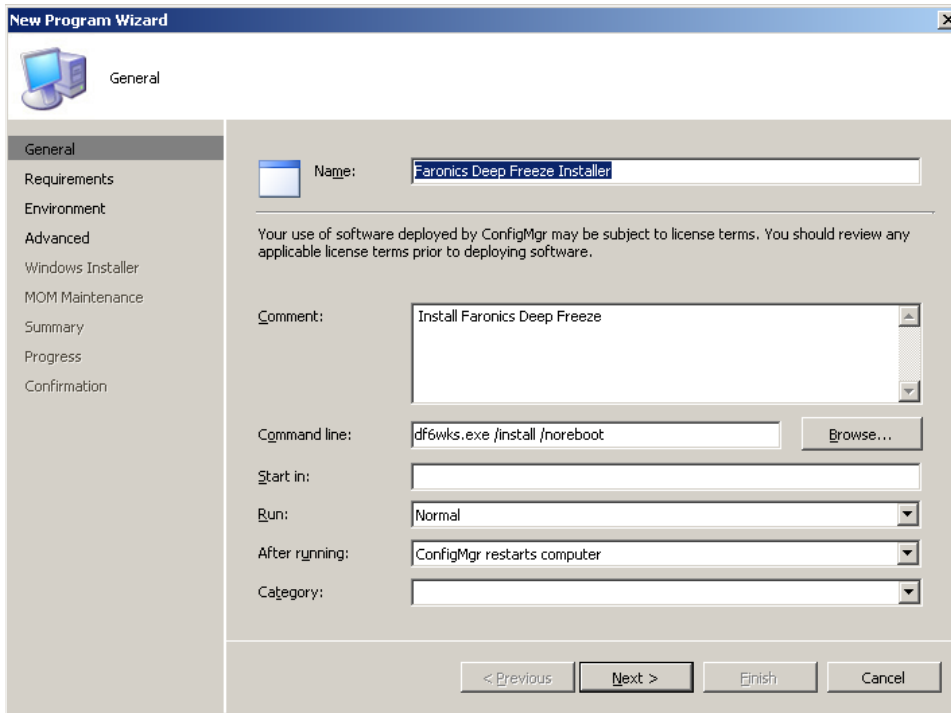
3. In the *New Package Wizard*, enter in the details for the Deep Freeze installation file that you wish to deploy and click *Next*.



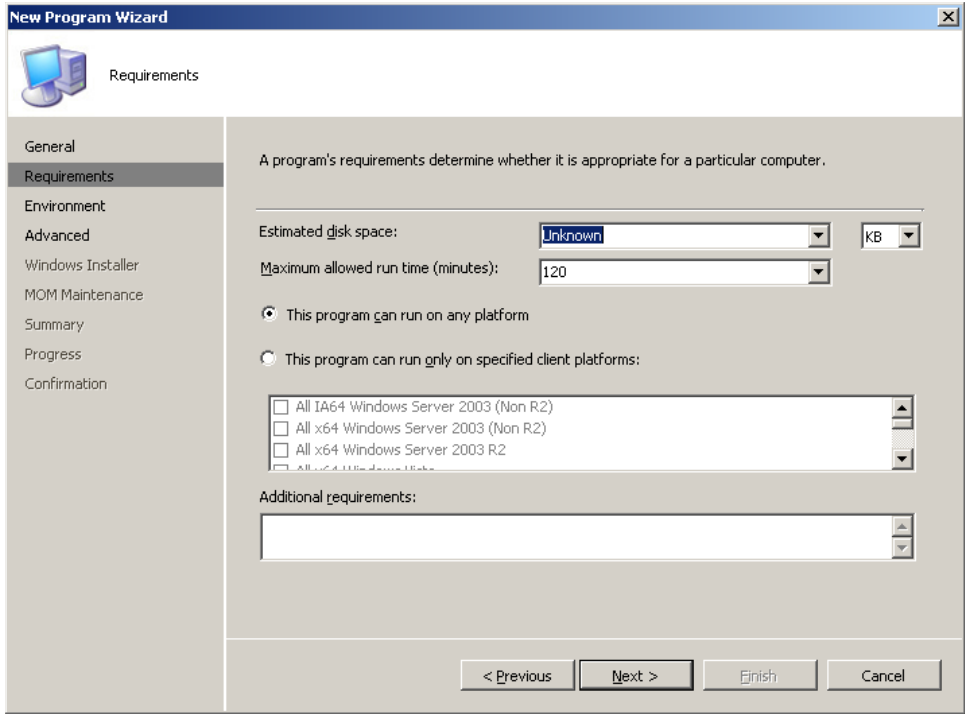
4. In the *New Package Wizard* select the *This package contains source files* check box. Then click on the *Set* button to select the source of the files. In the dialog that appears, browse to the location of the Deep Freeze installation file and click *OK*.



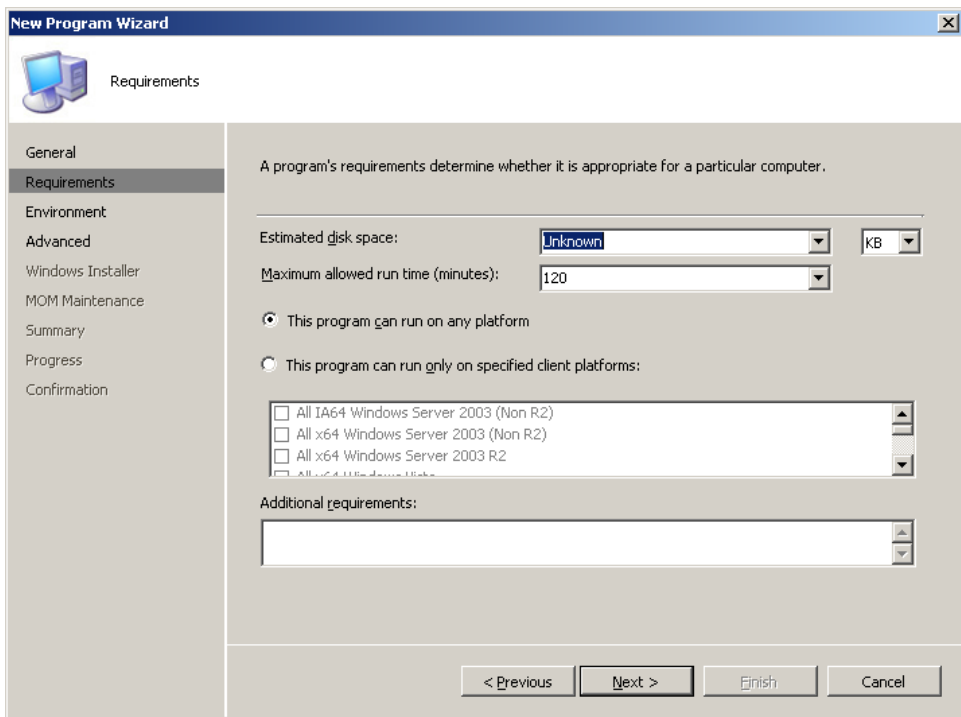
5. Ensure that the option *Always obtain source files from the source directory* is selected.
6. Click *Next* through the remainder of the tabs, setting any options required for your environment.
7. After the package is created, expand the package node under the *Software Distribution > Packages* node to display the Programs node. Select the Programs node and click on *New > Program* in the *Actions* to display the *New Program Wizard*.



8. Fill in the fields on the *General* page of the *New Program Wizard* with the appropriate information to install the software. In this instance, we will be running a file called *DF6WKS.EXE*, with the */INSTALL* and */NOREBOOT* command line switches.
9. Select the option *ConfigMgr restarts computer* in the *After running* drop down field. Click *Next*.

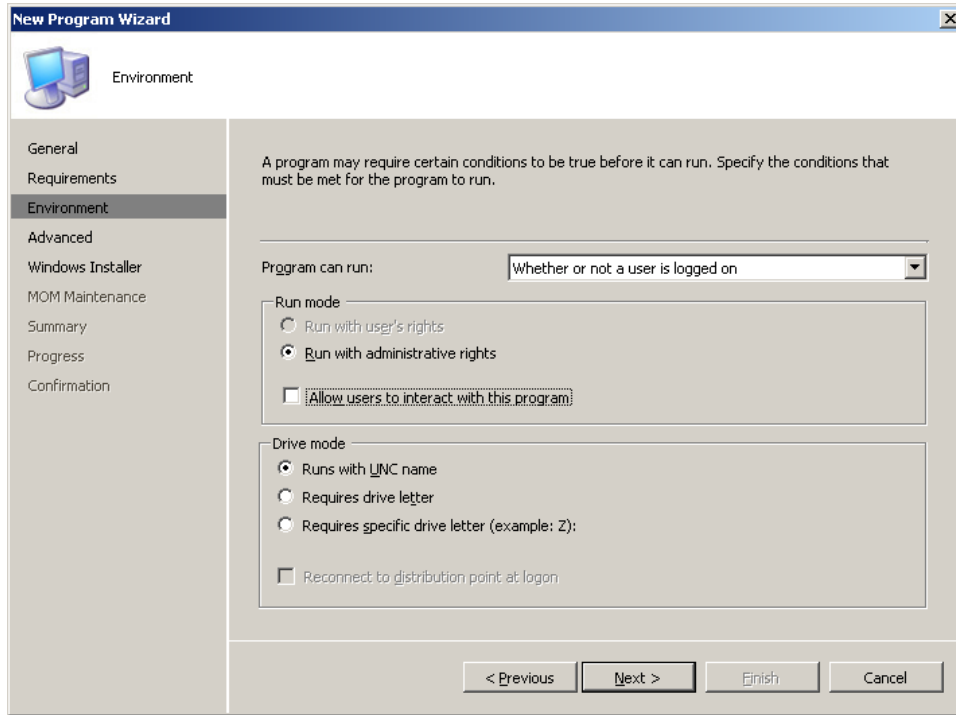


- There is no requirement for platform specific options to be selected on the *Requirements* page unless required for your environment. Deep Freeze will not attempt to install on an unsupported platform. Click *Next*.

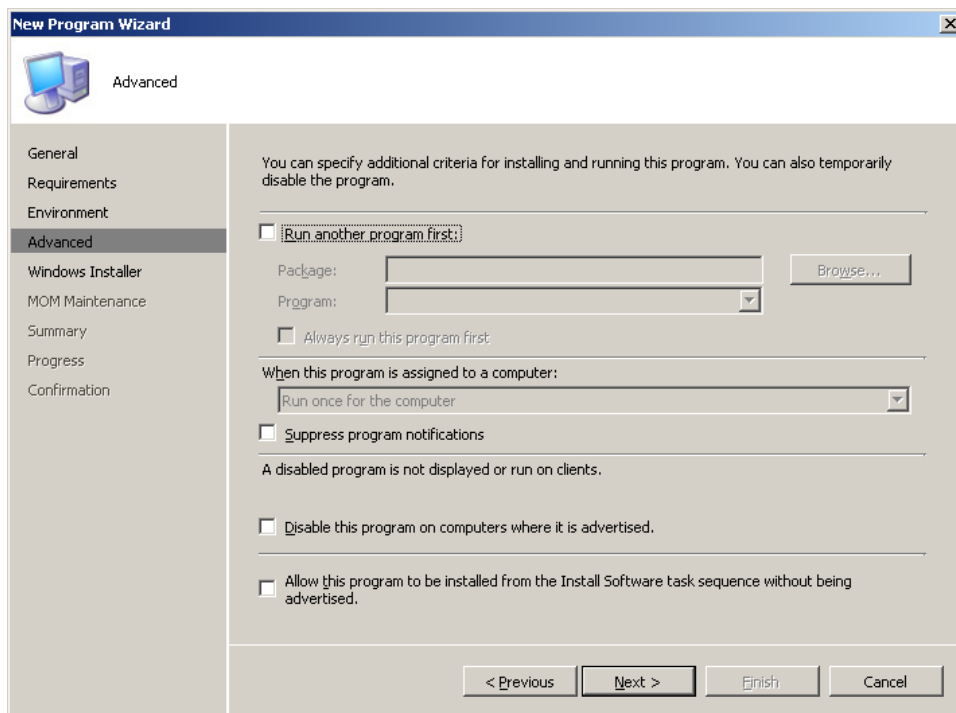


11. On the *Advanced* page no further configuration is required. Click *Next*.

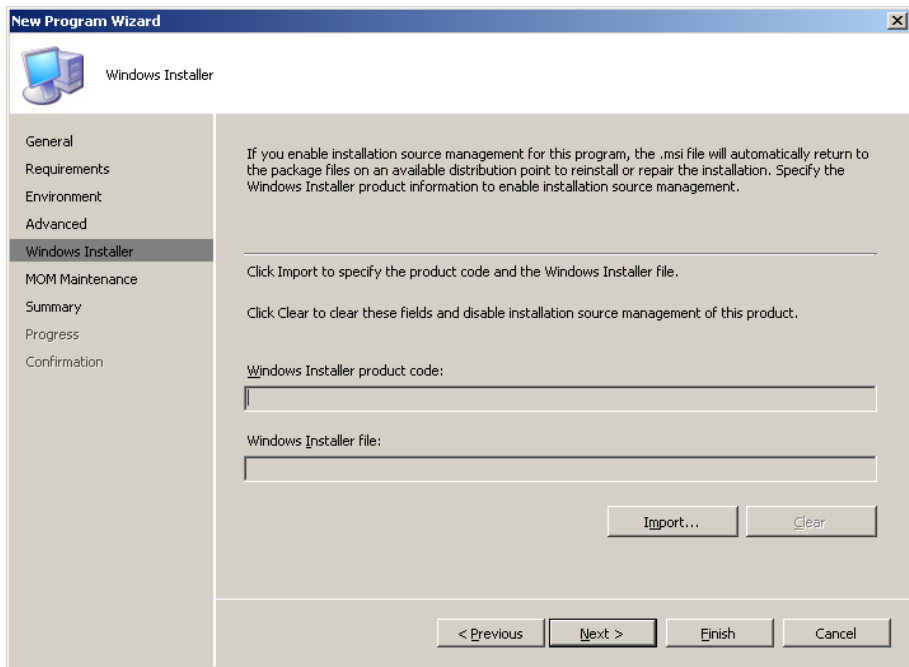
12. On the *Environment* page select the option *Whether or not a user is logged on* in the *Program can run* drop-down. Ensure that the option *Run with administrative rights* is selected in the *Run mode* area. Click *Next*.



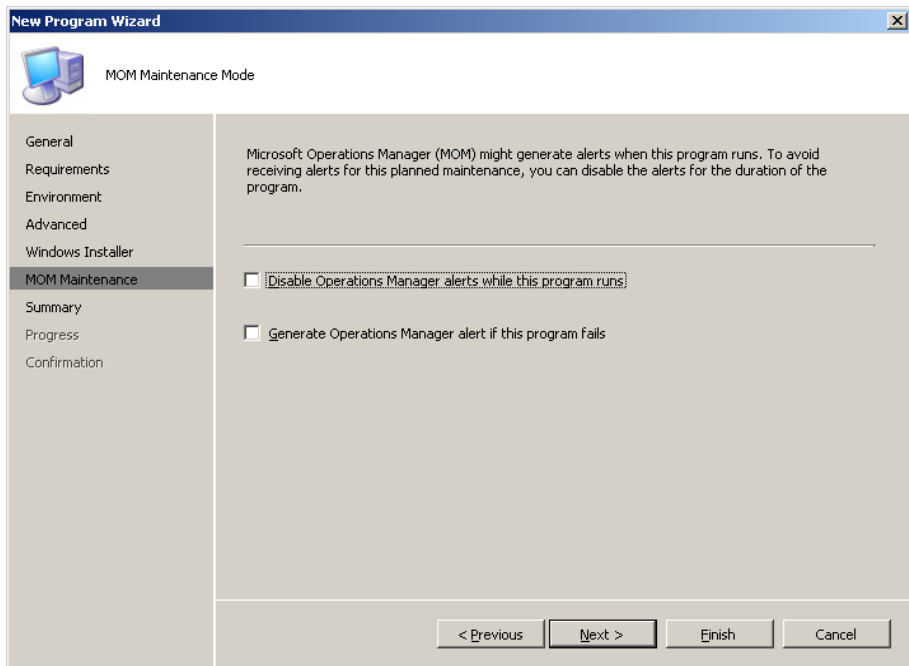
13. On the *Advanced* page no further configuration is required. Click *Next*.



- On the *Windows Installer* page no further configuration is required. Click *Next*.



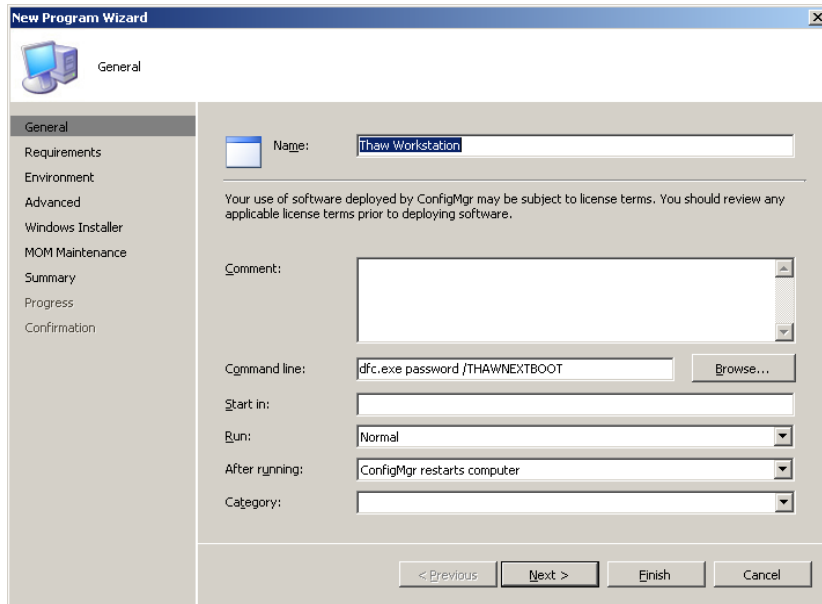
- On the *MOM Maintenance* page, no further configuration is required. Click *Finish*, then *Next*. Once the *New Program Wizard* is complete click *Close*. Now that the program to deploy Deep Freeze has been created, the application can be deployed by advertising it to the site computers.



Creating a Freeze/Thaw Task

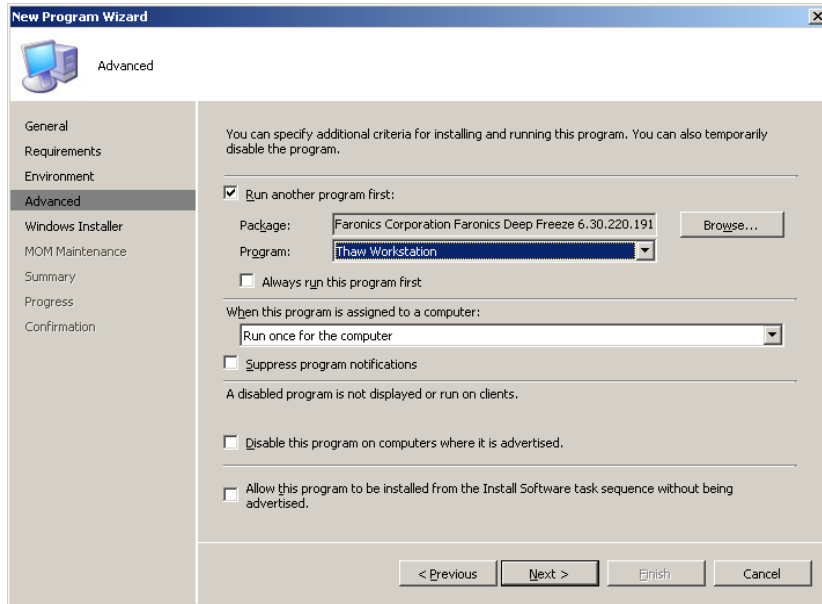
This section explains the procedure to create an application that can be deployed to turn Deep Freeze ON or OFF on demand. This is generally used as a method to provide for automatic deployment of third party applications without having to manually disable Deep Freeze on the workstations. The applications listed below are intended to be used as prerequisites when deploying other applications.

Expand the package node under the *Software Distribution > Packages* node to display the Programs node. Select the programs node and click *New > Program* in the *Actions* pane to display the *New Program Wizard*.



1. Enter details in the fields on the *General* page of the *New Program Wizard* with the appropriate information to install the software. In this example, we are running a *DFC.EXE* file, with the */THAWNEXBOOT* or */FREEZENEXBOOT* command line switches. Select the option *ConfigMgr restarts computer* in the *After running* drop-down field. Click *Next*.
2. There is no requirement for platform specific options to be selected on the *Requirements* page unless required for your environment. Click *Next*.
3. On the *Environment* page select the option *Whether or not a user is logged on* in the *Program can run* drop-down. Ensure that the option *Run with administrative rights* is selected in the *Run mode* area of the page. Click *Next*.
4. On the *Advanced* page no further configuration is required. Click *Next*.
5. On the *Windows Installer* page no further configuration is required. Click *Next*.
6. On the *MOM Maintenance* page no further configuration is required. Click *Finish*, then *Next*. Once the *New Program Wizard* is complete click *Close*.

- To make use of the Thaw and Freeze tasks when creating new advertisements for your workstations simply set the *Thaw Workstation* program as a program to be run prior to the distribution of a specific application on the *Advanced* properties page of the *New Program Wizard* as shown below.

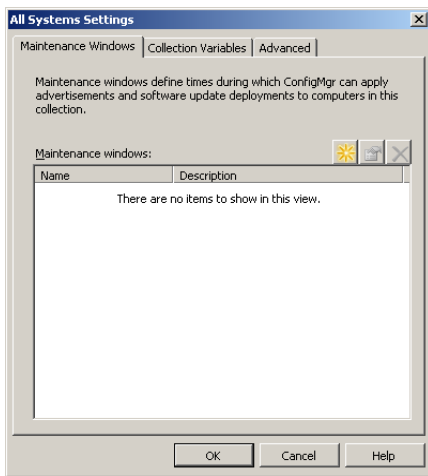


Assigning Maintenance Windows to Collections

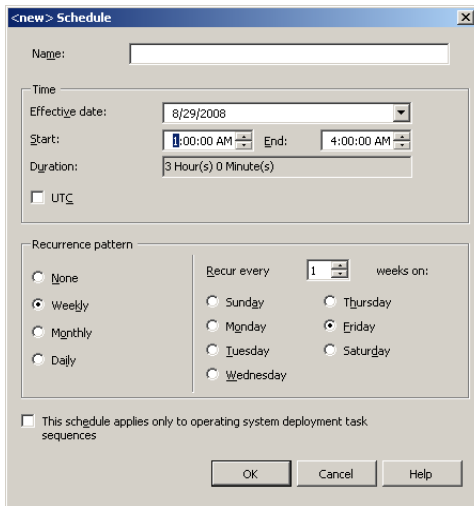
Both Deep Freeze and Configuration manager provide the ability to assign a maintenance window to a given set of computers. This is to allow for maintenance activities to take place during times when the systems are not in use. By synchronizing these times, the need to have a Thaw/Freeze set of packages configured in Configuration Manager is removed.

Maintenance Windows are set in Configuration Manager on the collections that machines are members of. It is recommended that each set of maintenance settings in Deep Freeze be grouped as a separate collection in Configuration Manager.

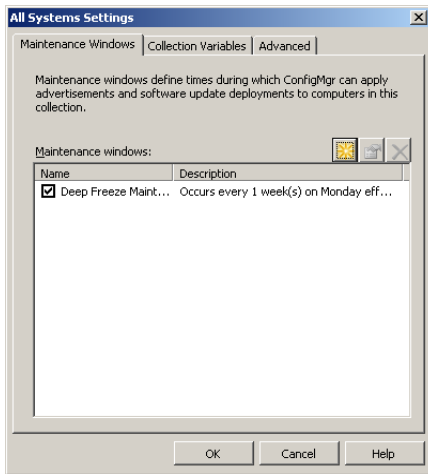
1. To set Maintenance Windows in Configuration Manager expand the *Collections* folder and right-click on the collection that you want to configure. Click *Modify Collection Settings*.



2. Click the yellow icon to create a new schedule. Configure the schedule to repeat according to your maintenance settings and click *OK*.



3. The new maintenance schedule will be displayed in the *Maintenance Windows* list.



4. Click OK.