

FARONICS

DEEPFREEZE™

ABSOLUTE Workstation Integrity

Deep Freeze - Integrating with Altiris

TECHNICAL WHITEPAPER

Last modified: March, 2007

Faronics

Toll Free Tel: 800-943-6422

Toll Free Fax: 800-943-6488

International Tel: +1 604-637-3333

International Fax: +1 604-637-8188

www.faronics.com

©1999-2007 Faronics Corporation. All rights reserved.

Deep Freeze, Anti-Executable, and WINSelect are trademarks
and/or registered trademarks of Faronics Corporation.

All other company and product names are trademarks of their respective owners.



Contents

Introduction.....	3
Who should use this document?	3
Installing the Altiris Remote Agent	3
To install the Altiris Remote Agent:.....	3
Installing the Deep Freeze Configuration Administrator.....	5
To Create an Altiris Job for Installing the Deep Freeze Configuration Administrator:	5
To Run the Altiris Job for Installing the Deep Freeze Configuration Administrator:.....	7
Upgrading the Deep Freeze Configuration Administrator.....	8
Installing the Deep Freeze Workstation installation file and Workstation Seed File.....	8
To Install the Workstation Installation or Seed Files:	8
Uninstalling Deep Freeze	13
Using Deep Freeze Command Line Control to Control Deep Freeze	14
Installing Deep Freeze Command Line Control on workstations	14
To install DFC on workstations:	14
Controlling Deep Freeze with DFC command.....	15
To manually use the DFC command to control Deep Freeze:.....	16
Using DFC in an Altiris job.....	17
To Create a DFC Altiris Job that Uses DFC:	17

Introduction

Deep Freeze provides network administrators with a simple and 100 percent successful method of maintaining desktop systems and reduces software technical support to an absolute minimum. Completely invulnerable to hacking, Deep Freeze instantly protects and preserves original computer configurations. No matter what changes a user makes to a workstation, simply restart to eradicate all changes and reset the computer to its original state. Computing environments are easier to manage and maintain, and expensive computer assets are kept running at 100 percent capacity. The result is a truly protected and parallel network, completely free of harmful viruses and unwanted programs.

Who should use this document?

This document is intended for anyone who wants to use Deep Freeze in an Altiris environment. It explains how to:

- Install the Altiris agent remotely
- Install and upgrade the Configuration Administrator
- Install and Uninstall Deep Freeze Workstation files and Seeds
- Install and use Deep Freeze Command Line Control (DFC) to manage workstations both manually and as an Altiris job

To use this document, you should:

- Have a working knowledge of Altiris Deployment Console
- Be familiar with creating Altiris jobs

This document assumes that all the components of your Altiris environment are installed, configured, and operating correctly. The examples are based on Altiris Deployment Console version 6.0 (build 206).

Installing the Altiris Remote Agent

Before you can install and manage Deep Freeze remotely, you must install the Altiris Remote Agent on the workstations (Altiris calls these clients) where you want to install Deep Freeze.

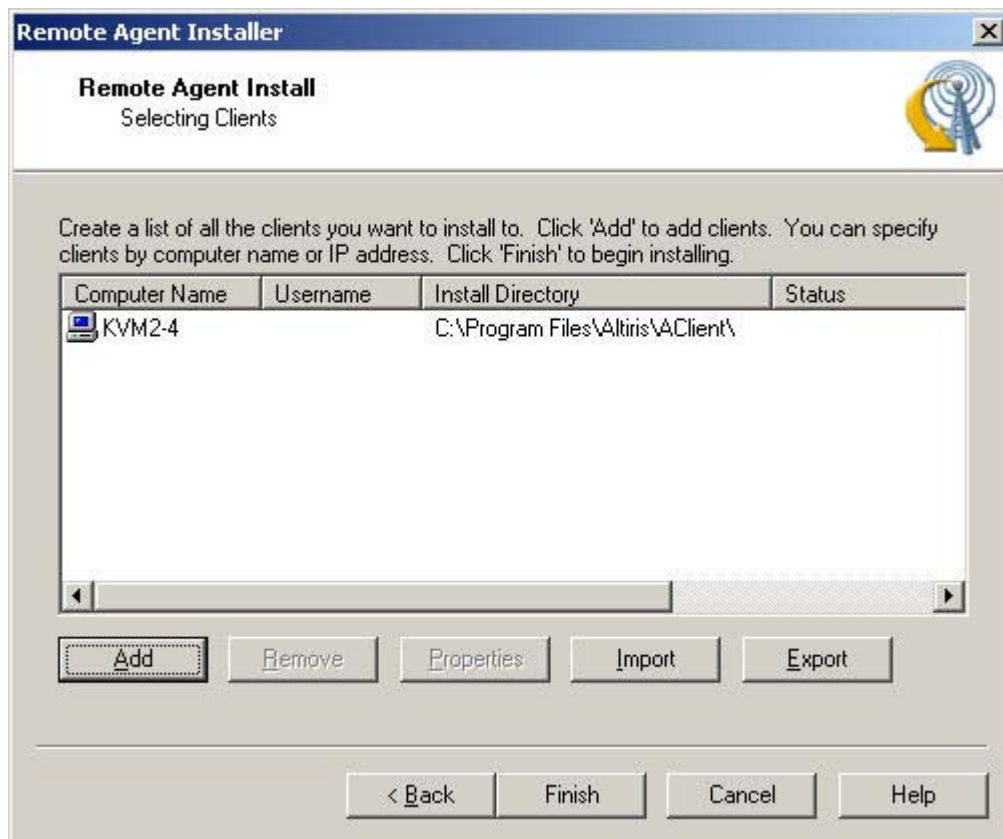
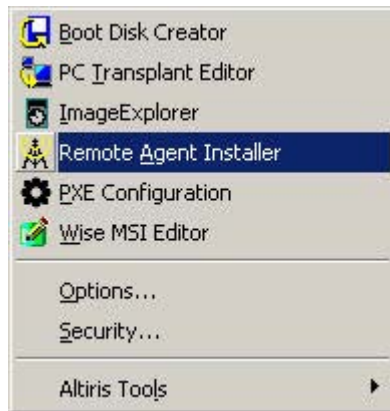
This following procedure is our recommended method for installing the Altiris Remote Agent. For more information on this and other methods for installing the remote Agent, see the Altiris Deployment Console documentation.

To install the Remote Agent on client computers, you need an account with local user rights. You only need to use this account when installing Remote Agent, so either use your domain administrator or a domain account with local user rights.

To install the Altiris Remote Agent:

1. Confirm that your account has local user rights (admin\$ share), by browsing to: \\<hostname>\admin\$ and replacing <hostname> with the name of the workstation on which you want to install the Remote Agent. If you can access this share you have sufficient rights.

2. In the Altiris Deployment Console, from the *Tools* menu, select *Remote Agent Installer*. Follow the instructions then select the workstation(s) where you want the Remote Agent installed.



3. Click *Finish*..

Once you have installed the Remote Agent, you can install Deep Freeze software on the workstations as long as you remain connected with those workstations.

Installing the Deep Freeze Configuration Administrator

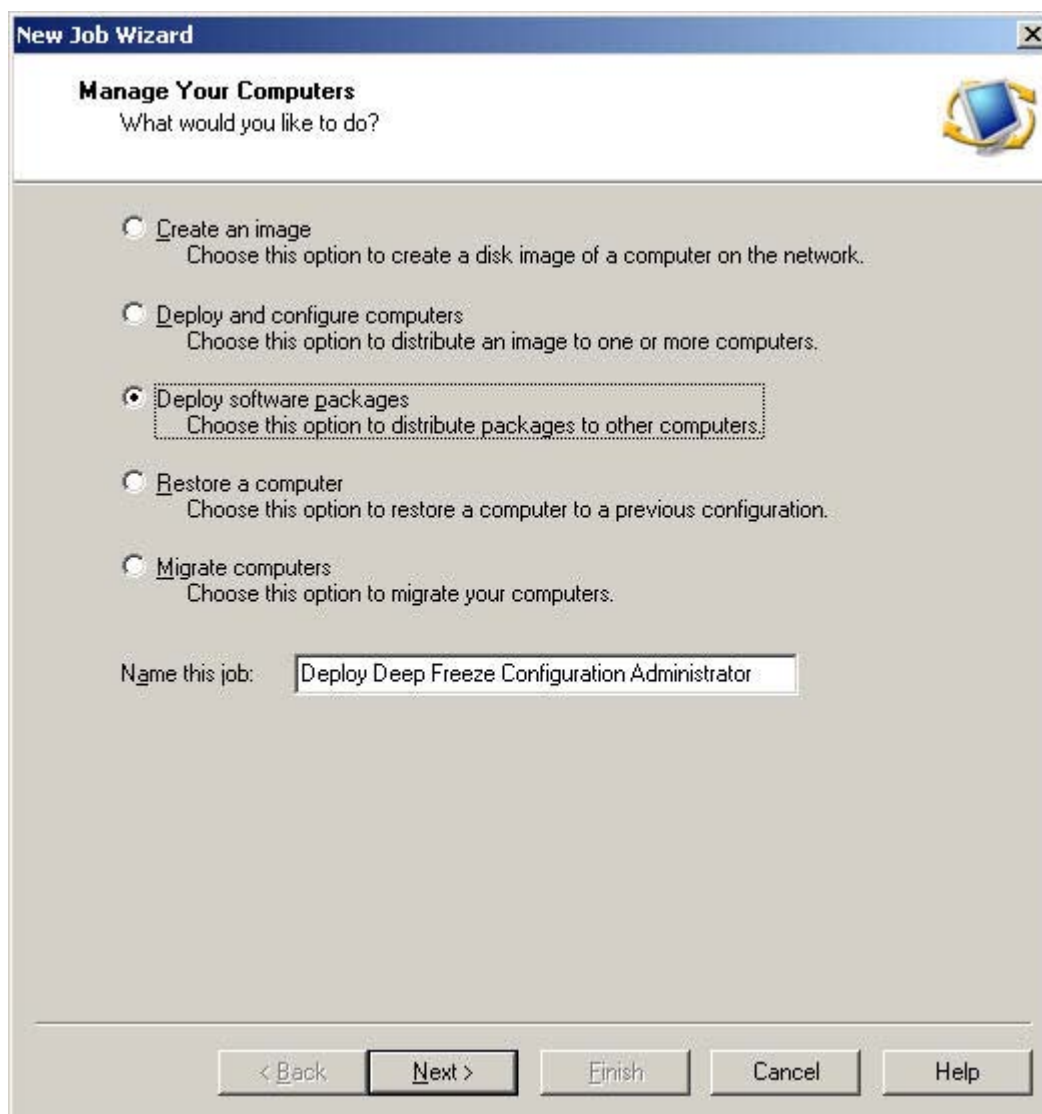
The Deep Freeze Configuration Administrator is the component of the Deep Freeze installation that allows you to install workstation files, Workstation Seeds, and create the Enterprise Console.

The Configuration Administrator should only be deployed to workstations that will require the administrative portion of the software installed.

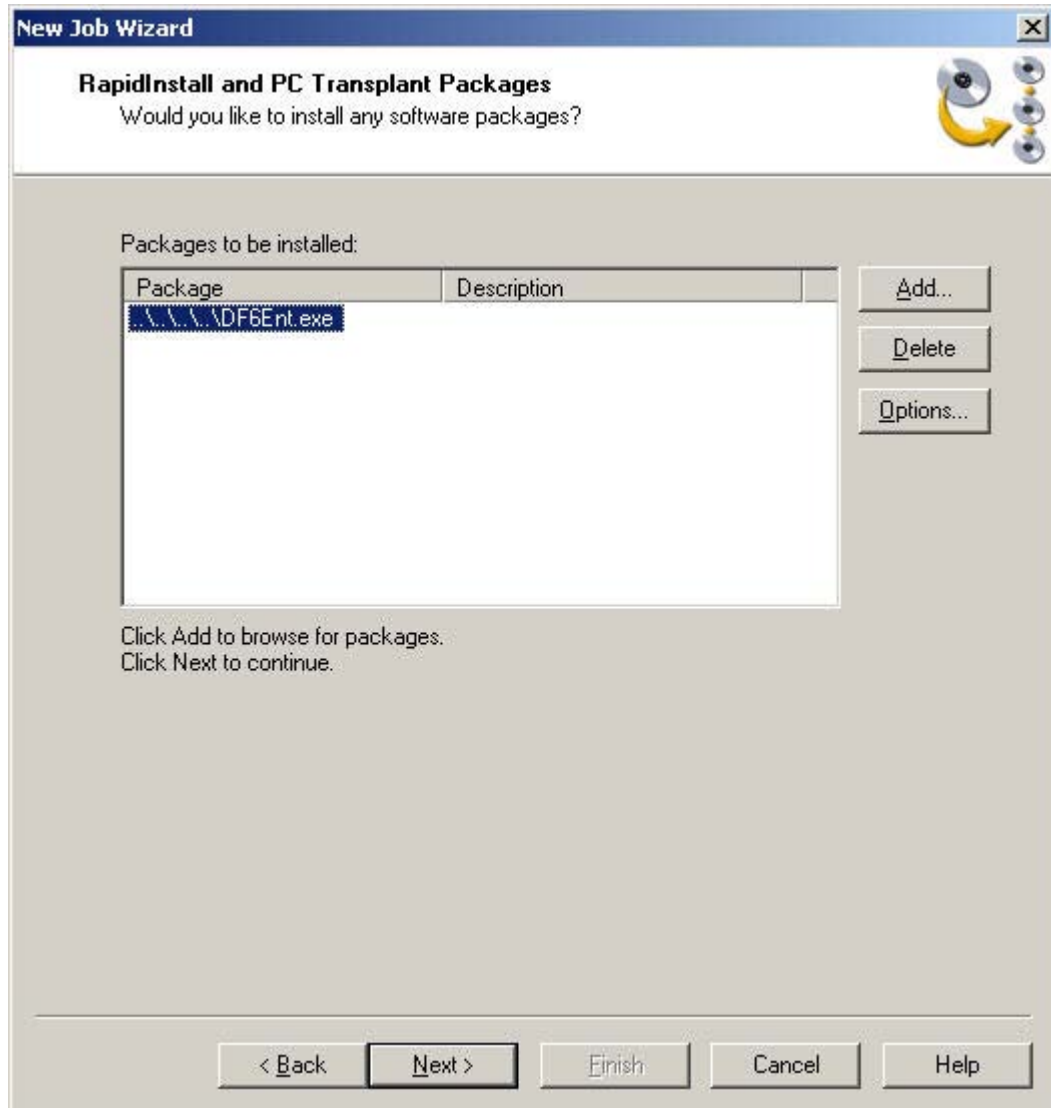
The following procedure uses a Customization Code. Keep this code secure as any user who obtains the Customization Code can bypass installed copies of Deep Freeze.

To Create an Altiris Job for Installing the Deep Freeze Configuration Administrator:

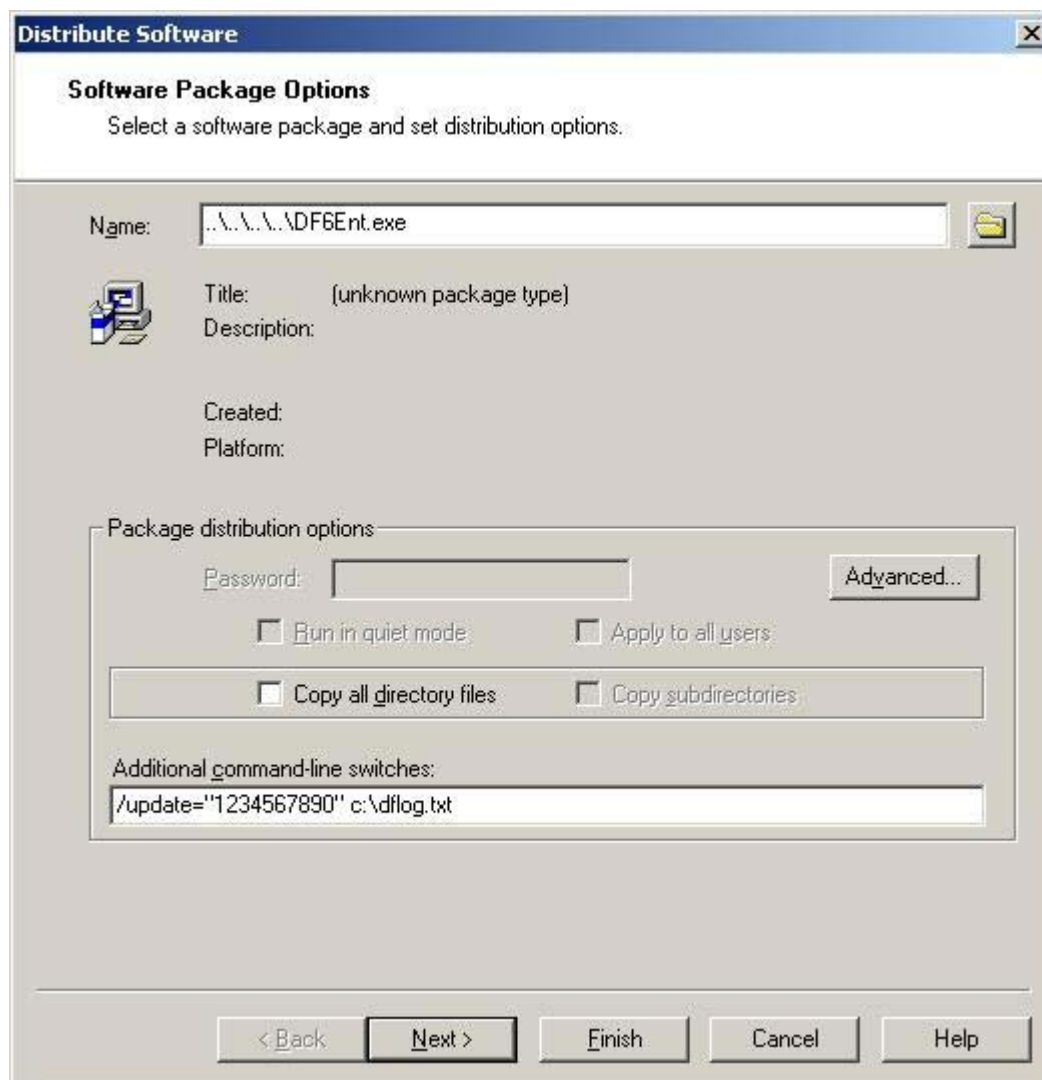
1. In the Altiris Deployment Console, from the *File* menu, select *New>Job Wizard*.
2. In the Manage Your Computers dialog box, select *Deploy software packages*.
3. In the Name this job box, type a job name and click *Next*.



4. In the Job Conditions dialog box, accept the defaults and click *Next*.
5. In the RapidInstall and PC Transplant Packages dialog box, click *Add* and browse to and select the Deep Freeze Configuration Administrator install file.



6. Click *Options*.



7. Type the command `/update=<customization code> c:\dflog.txt`, where `<customization code>` is a ten-digit encrypted code that you assign, and Altiris applies to the Deep Freeze installation, and click *OK*.

To Run the Altiris Job for Installing the Deep Freeze Configuration Administrator:

1. Drag and drop the created job on the machine where you want to install the Deep Freeze Configuration Administrator. .
2. Schedule the job to *Run Immediately*.
A warning message appears indicating the file is not a valid RapidInstall or PC Transplant package.
3. Click *Yes*.
Altiris installs the Configuration Administrator on the client computer.
4. Browse to `C:\Program Files\Faronics\Deep Freeze 6 Enterprise` and double-click `DFAdmin6` to start the Configuration Administrator.

Upgrading the Deep Freeze Configuration Administrator

To upgrade the Deep Freeze Configuration Administrator to a more recent version, replace the installation file on the network share with the updated DF6Ent.EXE application and complete the previous procedure.

Installing the Deep Freeze Workstation installation file and Workstation Seed File

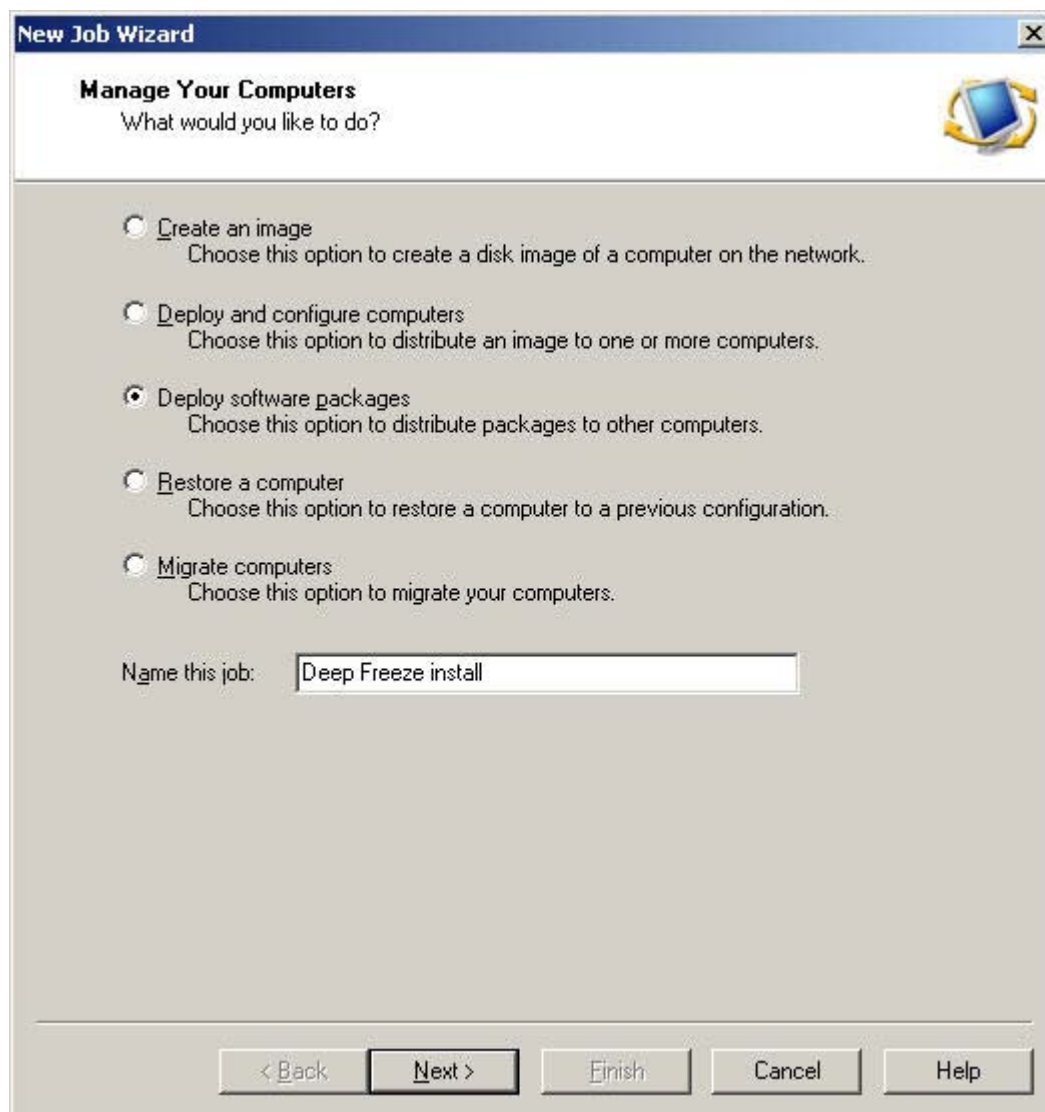
The Deep Freeze workstation install files and Workstation Seed files are the workstation level components of Deep Freeze that need to be installed on all workstations that protected by Deep Freeze. The following procedure assumes that you already have created the Deep Freeze installation file or the Seed file and are ready to install.

You do not need to install both the workstation installation file and the Workstation Seed. The workstation installation file contains a full copy of the Workstation Seed and is installed when you run the full workstation installation. The Workstation Seed should only be installed if you want to use the Deep Freeze Enterprise Console to push the workstation installation file to workstations rather than using Altiris.

To Install the Workstation Installation or Seed Files:

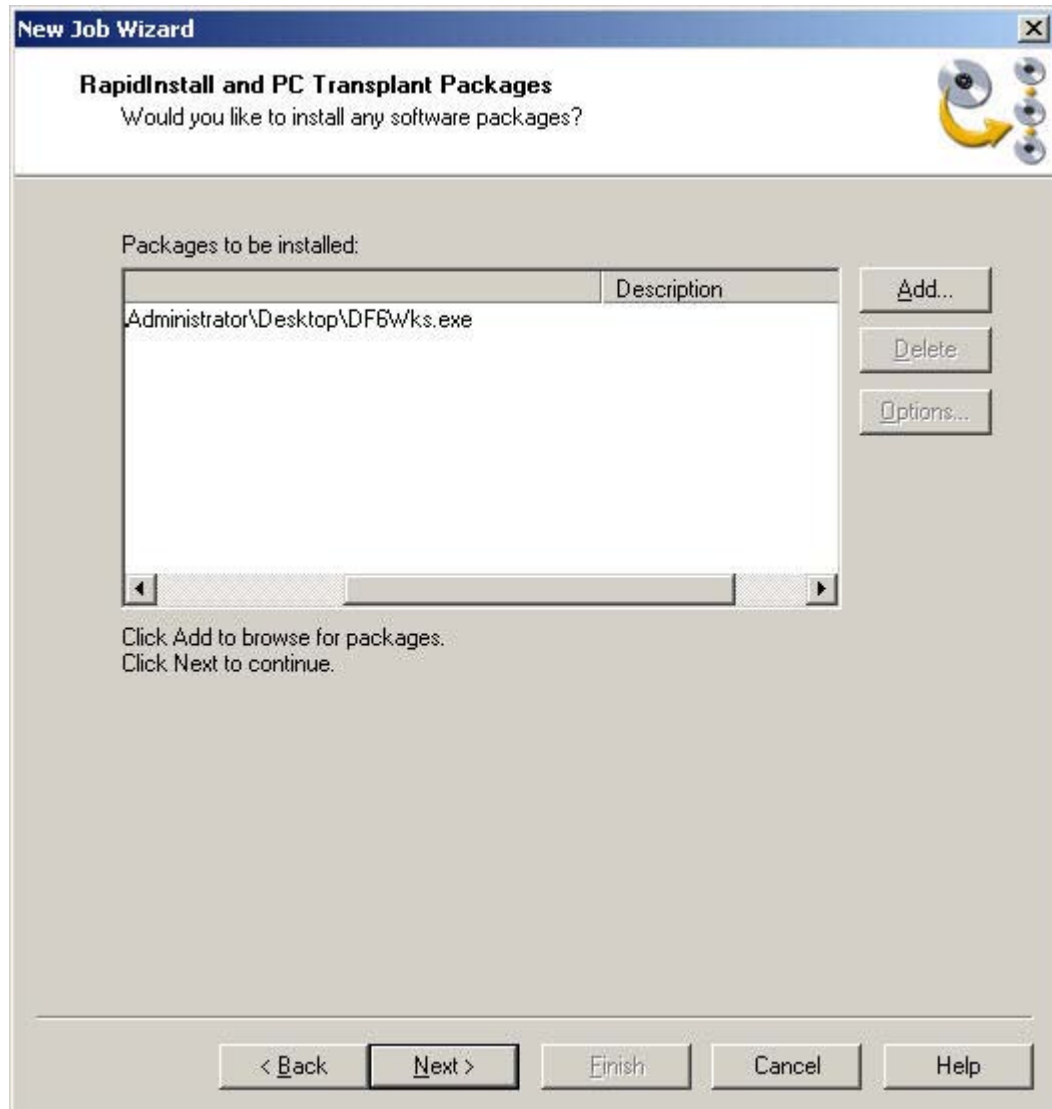
1. Copy the Seed or the workstation installation file to a share on the network that the workstation can access.
2. In the Altiris Deployment Console, from the *File* menu, select *New>Job Wizard*.

3. In the Manage Your Computers dialog box, select *Deploy software packages*.

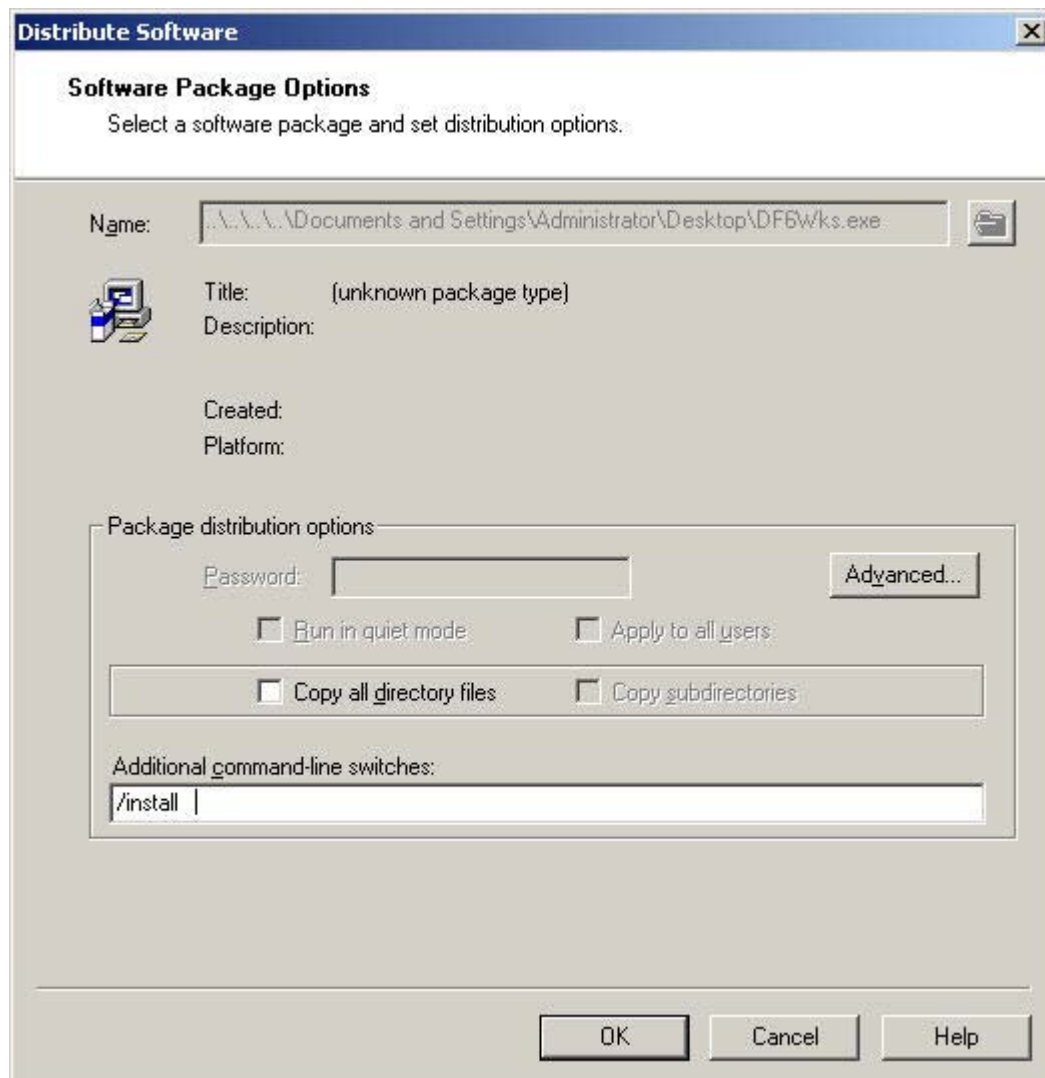


4. In the Name this job box, type a job name and click *Next*.
5. In the Job Conditions dialog box, accept the defaults and click *Next*.
6. In the RapidInstall and PC Transplant Packages dialog box, click *Add* and browse to and select the workstation or Seed install file.

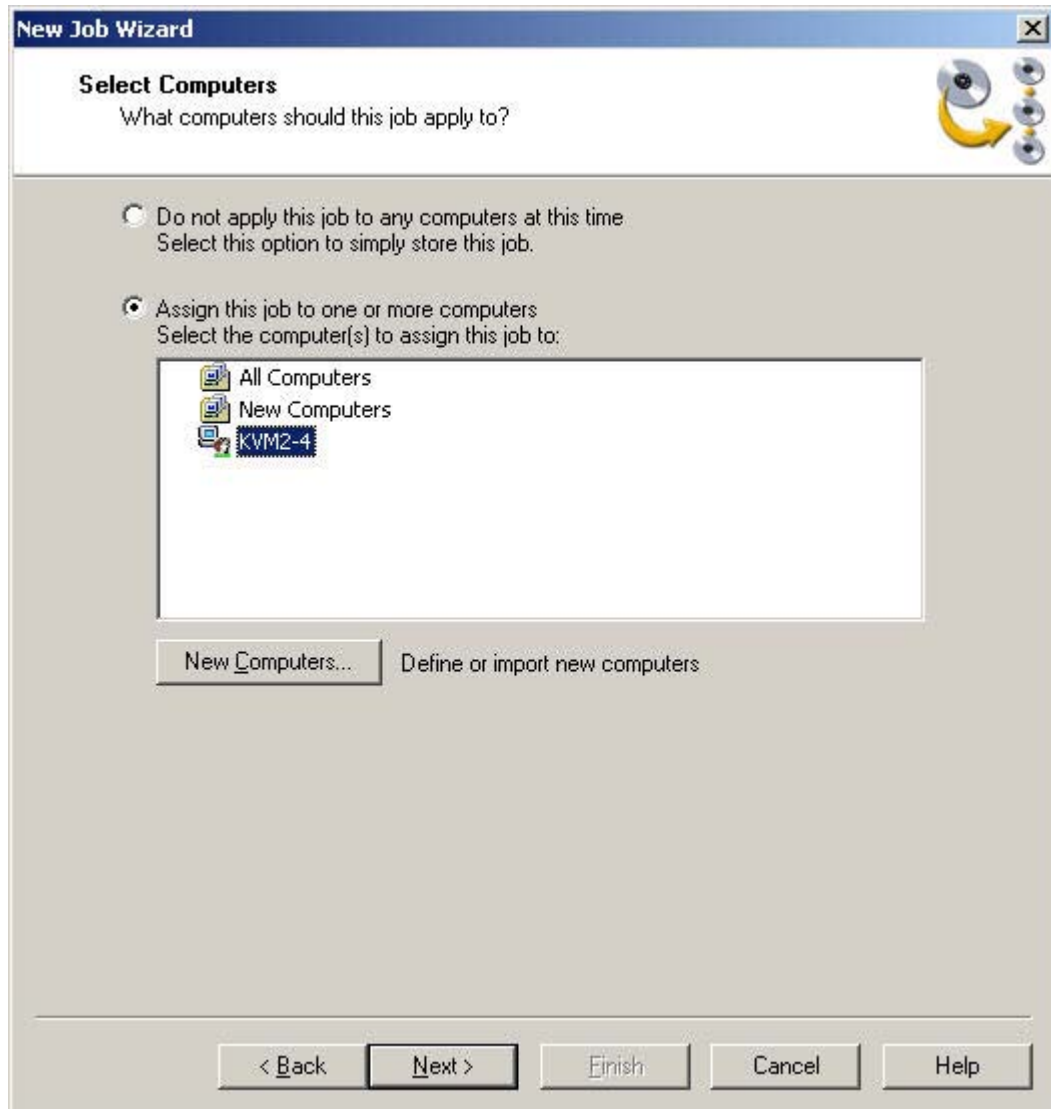
7. Click *Options*.



8. Type the command `/install` and click OK. This lets Deep Freeze install without your intervention, or “silently.”



9. Select the workstation(s) where you want the package installed, and click *Next*.



10. In the Schedule Job dialog box, select *Run this job immediately*, and click *Finish*.

New Job Wizard

Schedule Job
Run job immediately or schedule it for a later time or interval.

Job Schedule | 1 Computer(s) Selected | 1 Job(s) Selected

☐ Leave job unscheduled at this time.
☒ **Run this job immediately.**
 Schedule for immediate execution.
☐ Schedule this job.
 Schedule this job to run at a later time or interval.

Date: 1/ 5/2007 Time: 2:24 PM

☐ Repeat this job every 1 day(s)
☒ Allow this job to be deferred for up to 5 minute(s)
☐ Schedule in batches of 5 computers at 25 minute intervals

< Back Next > Finish Cancel Help

Altiris will install Deep Freeze and Deep Freeze will start in a Frozen state.

Uninstalling Deep Freeze

To uninstall Deep Freeze, simply thaw or disable Deep Freeze on the chosen workstation(s) using the boot Thawed command discussed on the following pages of this document. Then complete the previous installation process.

Using Deep Freeze Command Line Control to Control Deep Freeze

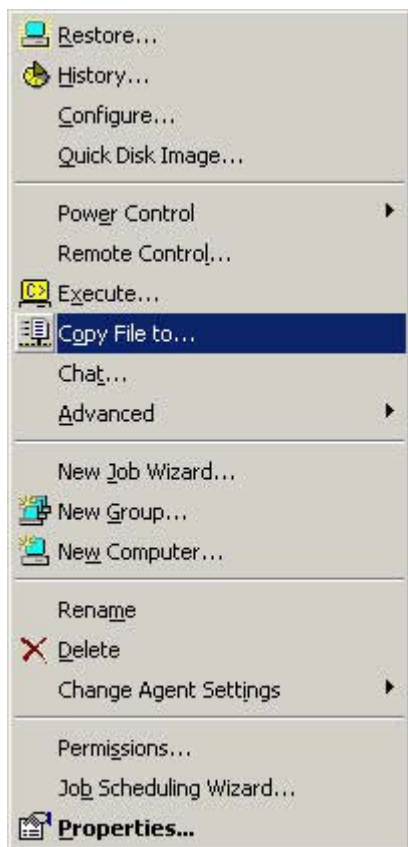
The Deep Freeze Command Line Control (DFC) offers network administrators increased flexibility in managing Deep Freeze workstations. DFC works in combination with third-party enterprise management tools and/or central management update workstations on the fly and on demand. For more information on the DFC command, see the Deep Freeze Enterprise User Guide.

Installing Deep Freeze Command Line Control on workstations

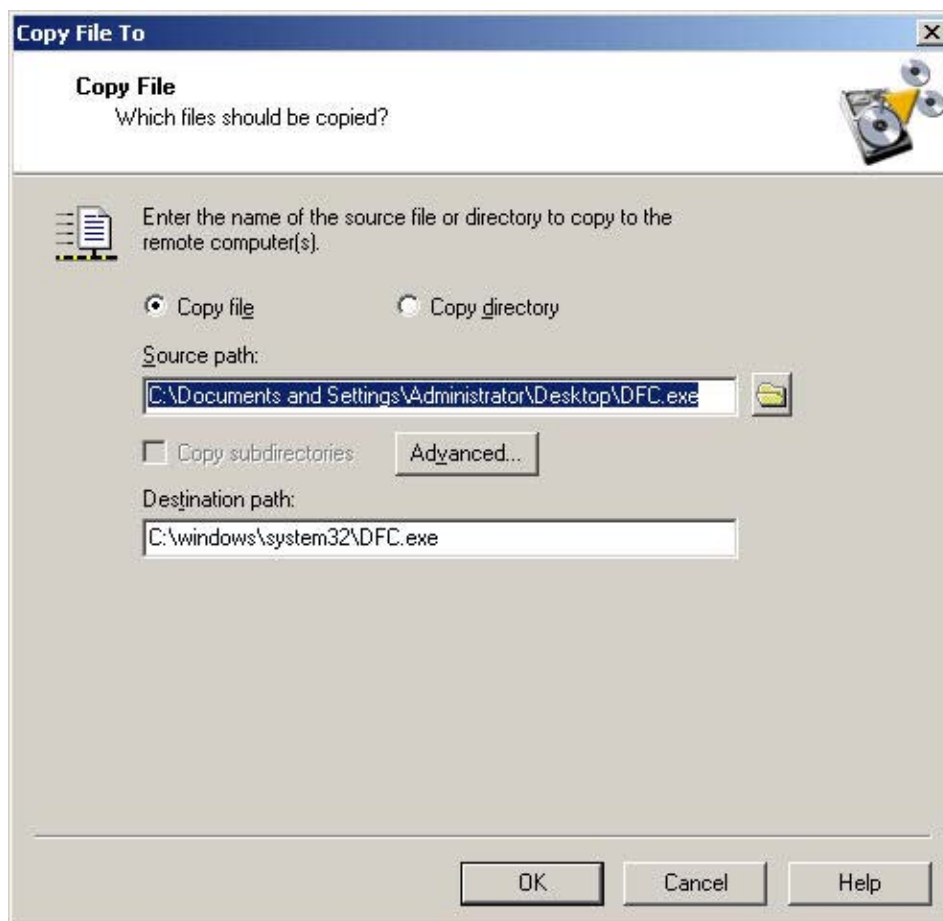
You can control an installed copy of Deep Freeze using Altiris Deployment Console and Deep Freeze Command Line Control (DFC). The DFC.EXE application is installed by default in the C:\Program Files\Faronics\Deep Freeze 6 Enterprise folder. You must copy it to workstations or run it by Altiris from a publicly accessible network share on the local machine to control the status of the systems.

To install DFC on workstations:

1. Copy the DFC.exe file to a share on the network that the workstation can access.
2. In the Altiris Deployment Console, select the workstation(s) where you want the DFC copied, right-click, and select *Copy File to*.



3. In the Copy File dialog box, select *Copy File* and in the Source path dialog box, select the DFC.exe file you want copied to the workstation, and in the Destination path box, type the location you want it located on the workstation. We recommend you put it in the C:\Windows\System32 folder since this location is already mapped.



4. Click OK
The DFC.exe file is transferred to the workstation. Once file is transferred you can start using DFC command on the workstations.

Controlling Deep Freeze with DFC command

The following procedure provides an example of controlling a workstation using the DFC command, by thawing a workstation.

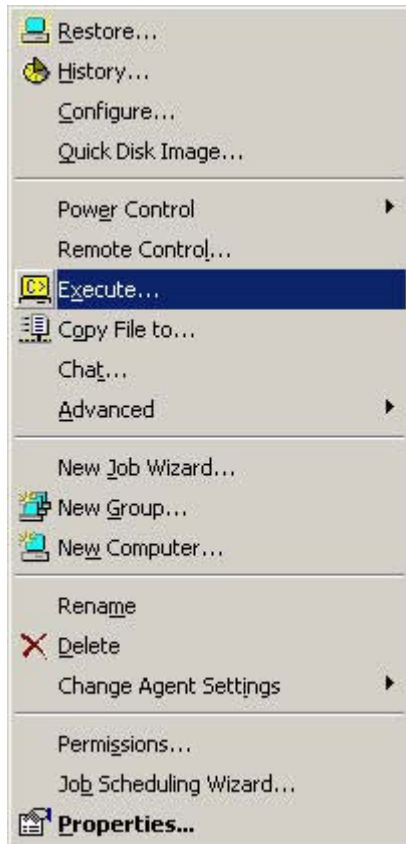
You can thaw a workstation in three ways:

1. From the Deep Freeze Console, select the machine in the workstations pane, and select Reboot Thawed.
2. On the local machine, shift+double-click the Deep Freeze icon, enter the Customization Code, and thaw the machine.
3. Using the DFC command remotely, as described in the following procedure.

You can control Deep Freeze with the DFC command using the Altiris Deployment Console manually or by creating an Altiris job.

To manually use the DFC command to control Deep Freeze:

1. In the Altiris Deployment Console, right-click the workstation where you want the DFC to run and select Execute.



2. In the Execute a Remote Command dialog box, in the Command to execute box, type the command line you want to execute; for example, to thaw a machine type `dfc <password> /bootthawed`, where `<password>` is the password you have set in the Deep Freeze Configuration Administrator, and click OK. Include a space between the password and the switch (/).



Here are some example DFC command line switches:

/THAWNEXTHOOK - Sets the computer to reboot into a thawed state during the next reboot. This command only works on Frozen workstations.

/FREEZENEXTBOOT - Sets the computer to reboot into a frozen state during the next reboot. This command only works on Thawed workstations.

/THAWLOCKNEXTBOOT - Sets the workstation to restart into a Thawed state with the keyboard and mouse locked during the next reboot.

Refer to the Deep Freeze Enterprise User Guide for other possible command line switches.

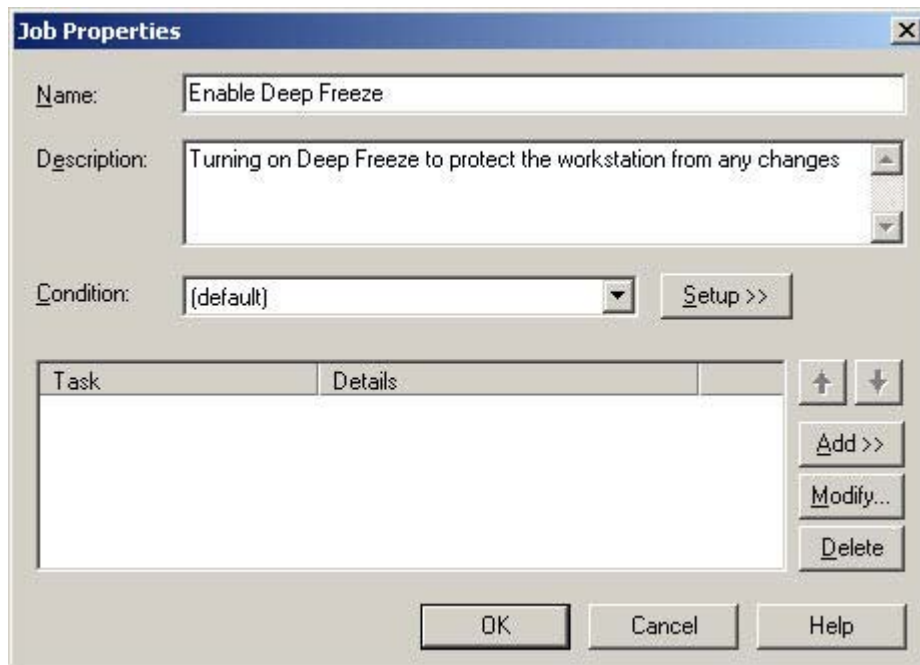
Please note that the use of hte */BOOTTHAWED* */BOOTFROZEN*, and */BOOTTHAWEDNOINPUT* perform a reboot immediately upon being run. This immediate reboot prevents the Altiris Deployment Server from being able to realise that the command has run successfully. To ensure that the command is properly run the use of the */THAWNEXTBOOT*, */FREEZENEXTBOOT*, and */THAWLOCKNEXTBOOT* commands is recommended.

Using DFC in an Altiris job

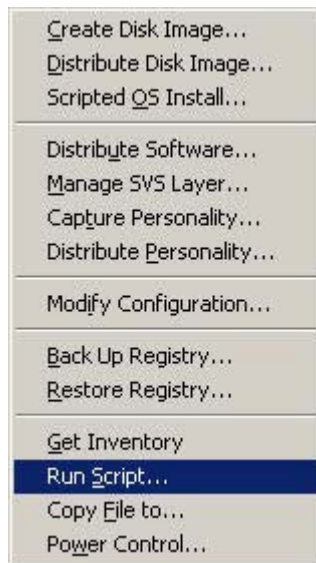
The following procedure automates the process of using the DFC command to control Deep Freeze so that you can run the job anytime.

To Create a DFC Altiris Job that Uses DFC:

1. In the Altiris Deployment Console, right-click the Jobs pane and select *New Job*.
2. In the Job Properties dialog box, in the Name box, type a name (Description is optional) and click *Add*.

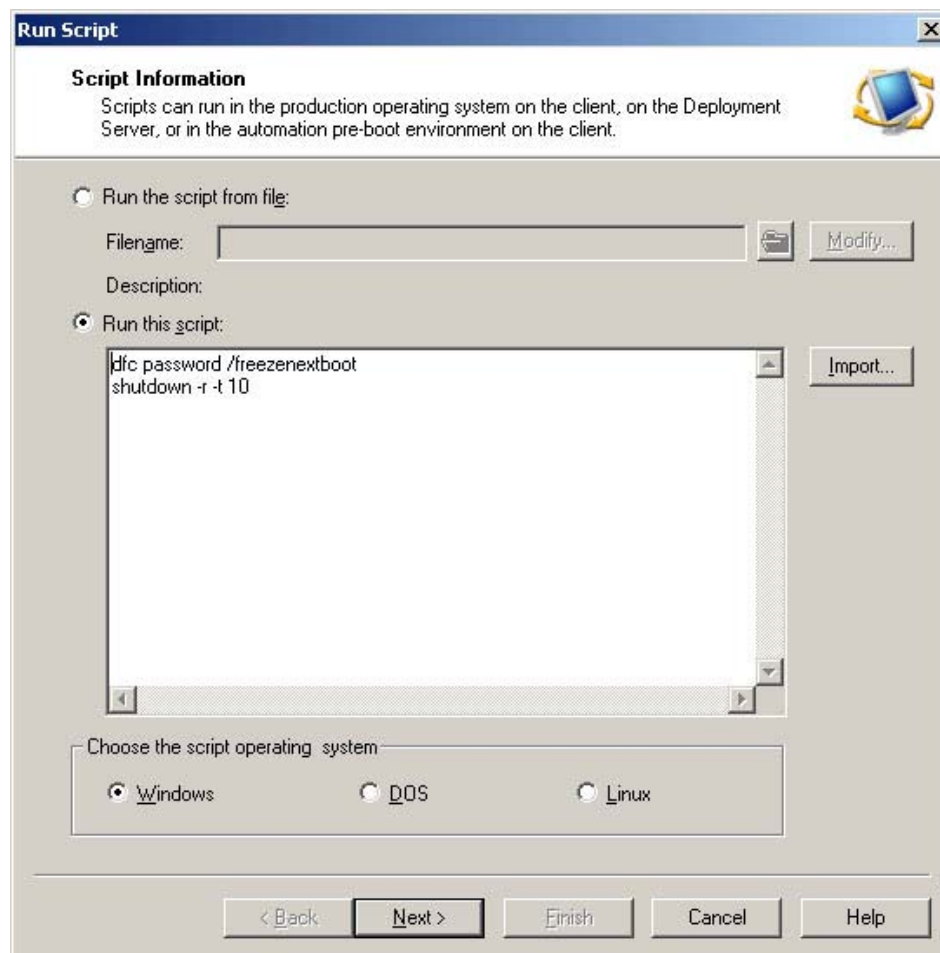


3. Select *Run Script*.



4. In the Script Information dialog box, select *Run this script* and type the script you want to run.

5. In the Choose the script operating system area, select *Windows*..



6. Click *Next*.
7. In the Script Information dialog box, accept the defaults and click *Next*.

Run Script

Script Information
Scripts can run in the production operating system on the client, on the Deployment Server, or in the automation pre-boot environment on the client.

Script Run Location

- ☒ On the client computer
- ☐ Locally on the Deployment Server

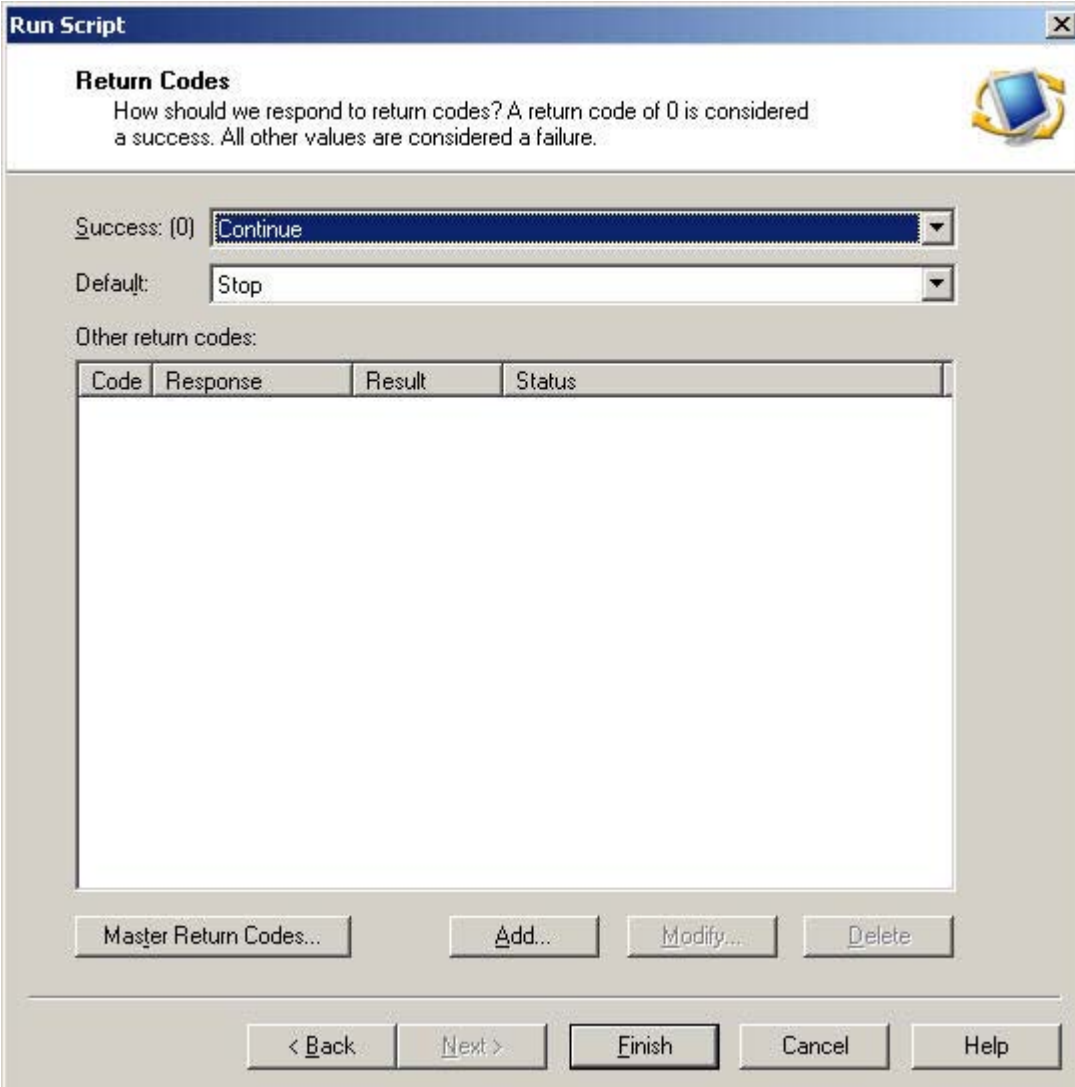
☒ Run when the agent is connected

Client Run Environment

- ☒ Production - Client-installed OS (Windows/Linux)
 - Security context - (Windows only)**
 - ☒ Default (local system account)
 - ☐ Specific user
 - Script Options - (Windows only)**
Script Window :
 - Script Options - (Windows/Linux)**
Additional command-line switches :
- ☐ Automation pre-boot environment (DOS/Windows PE/Linux)
 - Default refers to using the Automation partition or the default PXE boot option.

< Back Next > Finish Cancel Help

8. In the Return Codes dialog box, accept the defaults and click *Finish*.



The image shows a Windows-style dialog box titled "Run Script". It has a tab labeled "Return Codes". Below the tab, there is a text area that says: "How should we respond to return codes? A return code of 0 is considered a success. All other values are considered a failure." To the right of this text is a small icon of a computer monitor with a yellow arrow pointing to it. Below the text area, there are two dropdown menus. The first is labeled "Success: (0)" and has "Continue" selected. The second is labeled "Default:" and has "Stop" selected. Below these is a section labeled "Other return codes:" which contains a table with four columns: "Code", "Response", "Result", and "Status". The table is currently empty. At the bottom of the dialog, there are several buttons: "Master Return Codes...", "Add...", "Modify...", "Delete", "< Back", "Next >", "Finish", "Cancel", and "Help".

Run Script

Return Codes

How should we respond to return codes? A return code of 0 is considered a success. All other values are considered a failure.

Success: (0) Continue

Default: Stop

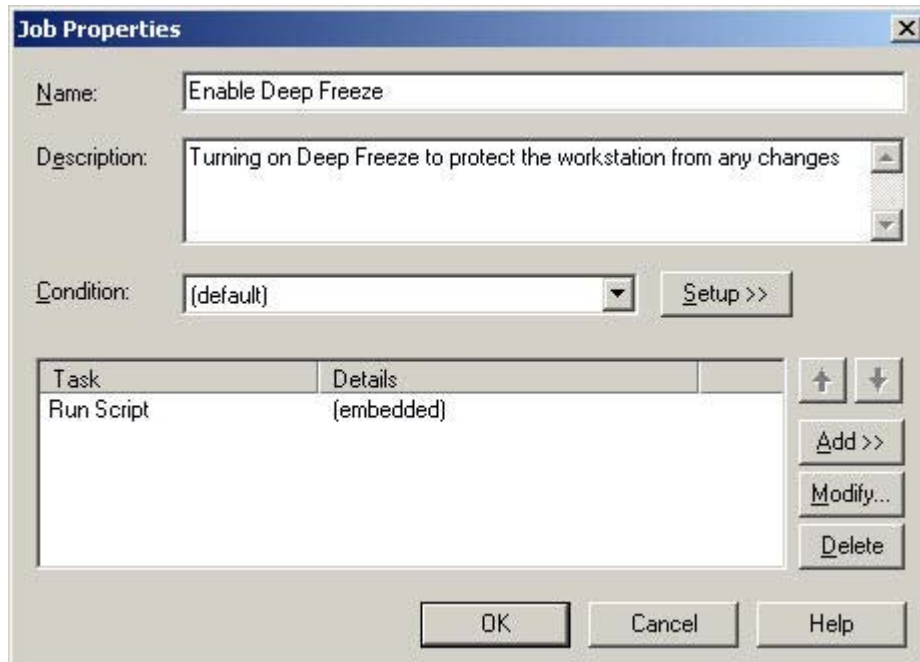
Other return codes:

Code	Response	Result	Status
------	----------	--------	--------

Master Return Codes... Add... Modify... Delete

< Back Next > Finish Cancel Help

9. In the Job Properties dialog box, click *OK*.



The Altiris job is created.

You can now drag and drop the job to the workstation of your choice, and you can schedule the job to run immediately or at some future date.