



FARONICS  
**ANTI-EXECUTABLE**<sup>™</sup>  
STANDARD

**ABSOLUTE Protection from Unauthorized Executables**

---

## **User Guide**

---



**FARONICS**<sup>™</sup>  
Intelligent Solutions for ABSOLUTE Control

[www.faronics.com](http://www.faronics.com)



Last modified: 2026

© 1999–2026 Faronics Corporation. All rights reserved. Faronics, Deep Freeze, Deep Freeze Cloud, Faronics Deploy, Faronics Core Console, Faronics Anti-Executable, Faronics Anti-Virus, Faronics Device Filter, Faronics Data Igloo, Faronics Power Save, Faronics Insight, Faronics System Profiler, and WINSelect are trademarks and/or registered trademarks of Faronics Corporation. All other company and product names are trademarks of their respective owners.



# Contents

<b>Preface</b> .....	<b>5</b>
Important Information .....	6
About Faronics .....	6
Product Documentation .....	6
Technical Support .....	7
Contact Information .....	7
Definition of Terms .....	8
<b>Introduction</b> .....	<b>10</b>
Anti-Executable Overview .....	11
About Anti-Executable .....	11
Anti-Executable Editions .....	11
System Requirements .....	12
Anti-Executable Licensing .....	13
<b>Installing Anti-Executable</b> .....	<b>15</b>
Installation Overview .....	16
Installing Anti-Executable Standard .....	17
Accessing Anti-Executable Standard .....	20
<b>Using Anti-Executable</b> .....	<b>21</b>
Overview .....	22
Configuring Anti-Executable .....	23
Status Tab .....	24
Verifying Product Information .....	24
Enabling Anti-Executable Protection .....	25
Anti-Executable Maintenance Mode .....	25
Execution Control List Tab .....	26
Users Tab .....	27
Adding an Anti-Executable Administrator or Trusted User .....	27
Removing an Anti-Executable Administrator or Trusted User .....	29
Enabling Anti-Executable Passwords .....	29
Temporary Execution Mode Tab .....	30
Activating or Deactivating Temporary Execution Mode .....	31
Setup Tab .....	32
Setting Event Logging in Anti-Executable .....	32
Monitor DLL Execution .....	32
Monitor JAR Execution .....	33
Monitor VBScript Execution .....	33
Monitor PowerShell Script Execution .....	33
Anti-Executable Stealth Functionality .....	33
Compatibility Options .....	33
Customizing Alerts .....	34
Report Tab .....	36
<b>Uninstalling Anti-Executable</b> .....	<b>37</b>
Uninstalling Anti-Executable Standard .....	38





# Preface

Faronics Anti-Executable is a solution that ensures endpoint security by only permitting approved executables to run on a workstation or server.

## Topics

---

[Important Information](#)

[Technical Support](#)

[Definition of Terms](#)



## Important Information

---

This section contains important information about Anti-Executable.

### About Faronics

Faronics delivers software that helps manage, simplify, and secure multi-user computing environments. Our products ensure 100% workstation availability, and have freed IT personnel from tedious technical support and software issues. Fueled by a customer-centric focus, Faronics' technology innovations benefit educational institutions, healthcare facilities, libraries, government organizations and corporations.

### Product Documentation

The following documents form the Faronics Anti-Executable technical documentation set:

- Faronics Anti-Executable User Guide — This document guides you how to use the product.
- Faronics Anti-Executable Release Notes — This document lists the new features, known issues and closed issues.
- Faronics Anti-Executable Feature History — This document lists the new features.
- Faronics Anti-Executable readme.txt — This document guides you through the installation process.



## Technical Support

---

Every effort has been made to design this software for ease of use and to be problem free. If problems are encountered, contact Technical Support.

Web: [support.faronics.com](http://support.faronics.com)

Email: [support@faronics.com](mailto:support@faronics.com)

Call Toll Free (North America): 1-800-943-6422

Call Local: 1-604-637-3333

Hours: Monday to Friday 7:00am to 5:00pm (Pacific Time)

## Contact Information

### Headquarters:

Faronics Corporation

609 Granville St., Suite 1400

Vancouver, BC V7Y 1G5, Canada

Web: [www.faronics.com](http://www.faronics.com)

Email: [sales@faronics.com](mailto:sales@faronics.com)

Phone: 800-943-6422 or 604-637-3333

Fax: 800-943-6488 or 604-637-8188

Hours: Monday to Friday 7:00am to 5:00pm (Pacific Time)

Faronics Technologies USA Inc.

5506 Sunol Blvd, Suite 202

Pleasanton, CA, 94566, USA

Faronics EMEA

8, The Courtyard, Eastern Road

Bracknell, Berkshire

RG12 2XB, United Kingdom

Faronics Pte Ltd

160 Robinson Road

#05-05 SBF Center

Singapore 068914



## Definition of Terms

---

Term	Definition
Alert	The notification dialog that appears when there is an attempt to launch an unauthorized executable. Anti-Executable Administrators can specify the message and image displayed in the alerts.
Anti-Executable Administrator	Anti-Executable Administrators have access to all Anti-Executable configuration options. They can manage Anti-Executable users, set Anti-Executable protection to Enabled or Disabled, and uninstall/upgrade Anti-Executable.
Anti-Executable Trusted User	They can set Anti-Executable protection to <i>Enable</i> or <i>Disable</i> . Trusted Users cannot uninstall/upgrade Anti-Executable.
Executable	Any file that can be launched by the operating system. The executable files managed by Anti-Executable have the extension .scr, .jar, .bat, .com, or .exe. Dynamic Link Library files with the extension .dll can be managed if configured in the Setup tab.
Execution Control List	An Execution Control list defines how Anti-Executable must manage a file or Publisher. The Execution Control List defines whether the file must be Allowed or Blocked.
External User	Any user that is neither an Anti-Executable Administrator nor an Anti-Executable Trusted user. An external user can run only authorized executables and has no control over Anti-Executable configuration. This restriction applies regardless of any user rights assigned by the operating system.
JAR file	A JAR (Java ARchive) is an archive file format contains many Java class files and associated metadata and resources (text, images and so on) into one file to distribute application software or libraries on the Java platform.
Maintenance Mode	When in Maintenance Mode, new executable files added or modified are automatically added to the Local Control List.



Term	Definition
Protection	When set to <i>Enabled</i> , this setting indicates that Anti-Executable is protecting a computer based on the Central Control List and Local Control List. When set to <i>Disabled</i> , any executable can be launched on the computer.
Publisher	A Publisher is the creator of a file. A Publisher validates the file by digitally signing it. Anti-Executable uses the Publisher name, product filename, and version details to identify the files created by a Publisher.
Stealth Mode	Stealth Mode is a group of options that control visual indication of Anti-Executable's presence on a system. Stealth Mode provides the option to the Administrator to hide the Anti-Executable icon in the Windows system tray, and prevent the Alert from being displayed.
Temporary Execution Mode	Temporary Execution Mode allows users to run any executable without any action from Anti-Executable for a specified period. During this period, the user is allowed to run any executable without any restrictions. Blocked executables are not allowed to run.
Trusted Executable	A Trusted executable can launch other executables that themselves are unauthorized.
Unauthorized Executable	An Unauthorized executable is one that is not allowed to run.



# Introduction

Anti-Executable ensures total endpoint productivity by only allowing approved applications to run on a computer or server. Any other program — whether they are unwanted, unlicensed, or simply unnecessary — are blocked from ever executing.

## Topics

---

[Anti-Executable Overview](#)

[System Requirements](#)

[Anti-Executable Licensing](#)



# Anti-Executable Overview

---

## About Anti-Executable

Faronics delivers software that helps manage, simplify, and secure multi-user computing environments. Our products ensure 100% workstation availability, and have freed IT personnel from tedious technical support and software issues. Fueled by a customer-centric focus, Faronics' technology innovations benefit educational institutions, healthcare facilities, libraries, government organizations and corporations.

## Anti-Executable Editions

Faronics Anti-Executable has four different editions available. Whether you have servers or workstations, working standalone or as part of a network, Anti-Executable will provide you with the protection that you need. Choose the Anti-Executable edition that best suits your needs:

Edition	Use Anti-Executable to protect
Standard	A single standalone computer loaded with non-server operating system.
Server Standard	A single standalone computer loaded with server operating system.
Enterprise	Multiple computers loaded with non-server operating system.
Server Enterprise	Multiple computers loaded with server operating systems.



## System Requirements

---

Anti-Executable can be installed on the following operating systems:

- 32- and 64-bit editions of Windows 7, Windows 8.1, Windows 10 up to version 22H2 and Windows 11 up to version 25H2
- Windows Server 2008 R2, Windows Server 2012, Windows Server 2016, Windows Server 2019, Windows Server 2022, and Windows Server 2025



## Anti-Executable Licensing

---

Anti-Executable is available in both Full and Evaluation versions. An Evaluation version can be downloaded for free from Faronics' web site ([www.faronics.com](http://www.faronics.com)) and it will be fully operational for 30 days after installation. An expired Evaluation version will not protect the machine and must be uninstalled or upgraded to a Full Version. A Full version requires a valid License Key in order to protect the machine.



Server editions of Anti-Executable cannot be installed on a non-Server Operating System. License Keys for Server editions of Anti-Executable cannot be used on non-Server editions.

Non-Server editions of Anti-Executable cannot be installed on a Server Operating System. License Keys for Non-Server editions of Anti-Executable cannot be used on Server editions.





# Installing Anti-Executable

This chapter describes the installation process of Anti-Executable.

## Topics

---

[Installation Overview](#)

[Installing Anti-Executable Standard](#)

[Accessing Anti-Executable Standard](#)



## Installation Overview

---

Anti-Executable features installers for Windows Server 2008 R2, Windows Server 2012, Windows Server 2016, Windows 2019, Windows 2022, and 32- and 64-bit versions of Windows 7, Windows 8.1, and Windows 10 up to version 22H2 and Windows 11 up to version 25H2.

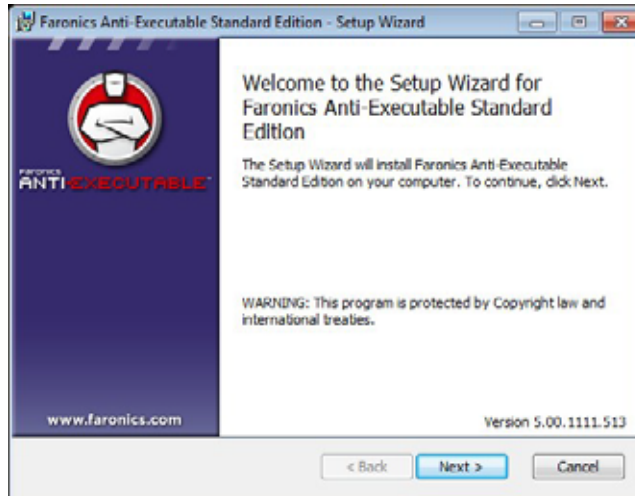
System	Install File
Windows non-Server (32-bit)	AESStd_32-bit.msi
Windows non-Server(64-bit)	AESStd_64-bit.msi
Windows Server (32-bit)	AESrvStd_32-bit.msi
Windows Server (64-bit)	AESrvStd_64-bit.msi



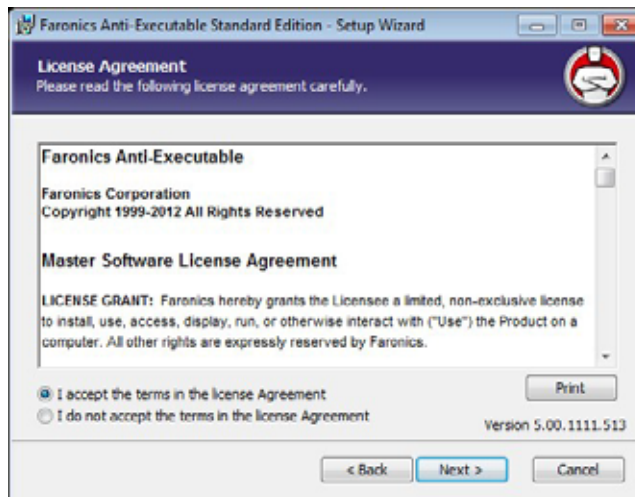
# Installing Anti-Executable Standard

To install Anti-Executable Standard, complete the following steps:

1. Double-click the *.msi* file to begin the installation process. Click *Next* to continue.



2. Accept the License Agreement. Click *Next* to continue.





3. Specify the *User Name* and *Organization*. Click *Next* to continue.

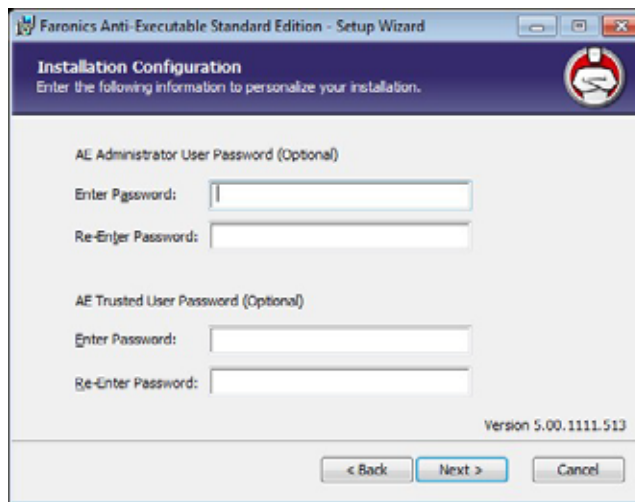
A screenshot of the 'Faronics Anti-Executable Standard Edition Setup' window. The title bar reads 'Faronics Anti-Executable Standard Edition Setup'. The window has a dark blue header with the text 'Customer Information' and 'Please enter your information.' Below the header, there are three text input fields: 'User Name:' with 'core' entered, 'Organization:', and 'License Key:'. There is a checkbox labeled 'Use Evaluation (30 days)' which is currently unchecked. At the bottom right, it says 'Version 5.00.1111.513'. At the bottom center, there are three buttons: '< Back', 'Next >', and 'Cancel'.

4. Specify the *Destination Folder*. The default location is *C:\Program Files\Faronics\AE*. Click *Next* to continue.

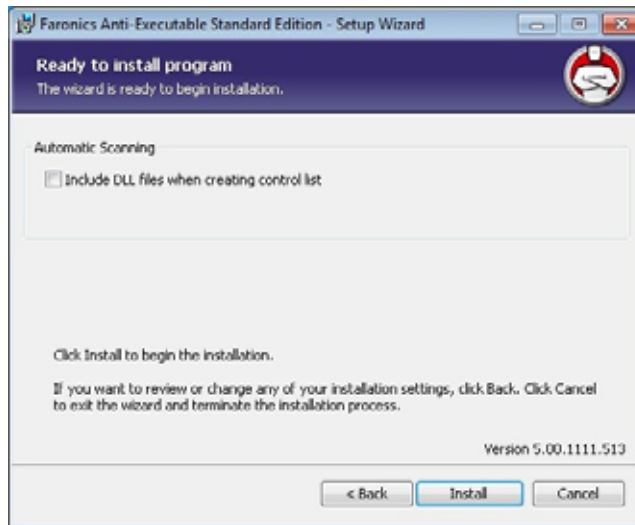
A screenshot of the 'Faronics Anti-Executable Standard Edition - Setup Wizard' window. The title bar reads 'Faronics Anti-Executable Standard Edition - Setup Wizard'. The window has a dark blue header with the text 'Destination Folder' and 'Select a folder where the application will be installed.' Below the header, it says 'Install Faronics Anti-Executable Standard Edition to:'. There is a text input field containing 'C:\Program Files\Faronics\AE\'. Below the input field is a 'Browse...' button. At the bottom right, it says 'Version 5.00.1111.513'. At the bottom center, there are three buttons: '< Back', 'Next >', and 'Cancel'.



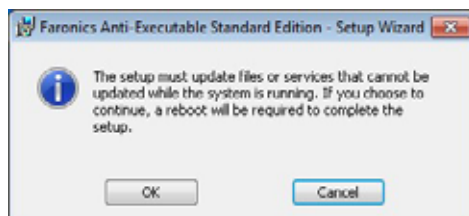
5. Specify the *AE Administrator User Password* and the *AE Trusted User Password*. Click *Next* to continue.



6. Select the following options and Click *Install*. Anti-Executable will scan the computer and create a Control List containing a list of all the files.
  - > Include DLLs while creating the control list — Select this option if you want DLLs to be included.



7. Click *OK* to restart the computer. Click *Cancel* to restart the computer later.



8. Click *Finish* to complete the installation.



## Accessing Anti-Executable Standard

---

Anti-Executable is accessed directly on a workstation by double-clicking on the Anti-Executable icon in the Windows System Tray. The Ctrl+Alt+Shift+F10 hotkey sequence can be used as well.

If you are an Administrator, you will have access to the Status, Execution Control List, and User tabs. If you are a Trusted User, you will have access only to the Status, and Execution Control List tabs.

External users are not permitted to access Anti-Executable. Anti-Executable Administrator and Trusted Users must enter the appropriate passwords to access Anti-Executable if those passwords have been set.



# Using Anti-Executable

This chapter describes the procedure to configure and use Anti-Executable.

## Topics

---

- [Overview](#)
- [Status Tab](#)
- [Execution Control List Tab](#)
- [Users Tab](#)
- [Temporary Execution Mode Tab](#)
- [Setup Tab](#)
- [Report Tab](#)



## Overview

---

Anti-Executable provides multiple Control Lists for enhanced protection. The following components are available:

- Execution Control List — An Execution Control list defines how Anti-Executable must manage a file or Publisher. The Execution Control List defines whether the file or Publisher must be Allowed or Blocked.

Anti-Executable is pre-populated with a list of commonly-known Publishers. This list is updated as needed.

- Local List of Files (Control List) — When Anti-Executable is installed for the first time on the workstation, Anti-Executable scans the computer and creates a list of all files that are *Allowed*.



## Configuring Anti-Executable

---

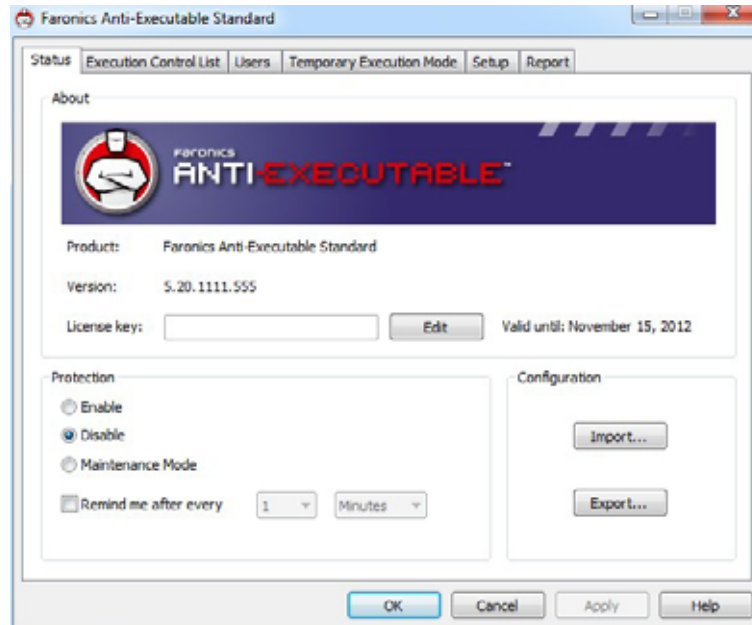
The following tabs are available in Anti-Executable:

- Status
- Execution Control List
- Users
- Temporary Execution Mode
- Setup
- Report



## Status Tab

The Status tab allows Anti-Executable Administrators and Trusted Users to configure various settings, set protection to *Enable*, *Disable*, or *Maintenance Mode*.



## Verifying Product Information

The About pane displays the version of Anti-Executable installed. If newer versions are available, *New version is available* is displayed. Click *Update* for more information.

If an Evaluation version of Anti-Executable has been installed, the *Valid until* field displays the date when Anti-Executable expires. Anti-Executable displays a notification about the current status of the License in the windows system tray.

Once the evaluation period expires, Anti-Executable will no longer protect a machine. The following expired icon is displayed in the system tray when Anti-Executable expires.



To convert an Evaluation version of Anti-Executable to a Full version, click *Edit* and enter a valid License Key in the *License Key* field. License Keys can be obtained by contacting Faronics or Faronics Partners.



## Enabling Anti-Executable Protection

Following installation, Anti-Executable is enabled by default.

Use the *Remind Me after every* checkbox to have Anti-Executable provide reminders on a workstation to enable Protection if Protection is disabled.

## Anti-Executable Maintenance Mode

Select *Maintenance Mode* and click *Apply* to run Anti-Executable in Maintenance Mode. When in Maintenance Mode, new executable files added or modified are automatically added to the Execution Control List. To exit Maintenance Mode, select *Enable* or *Disable*.

If *Enable* is selected, the changes are recorded by Anti-Executable. If *Disable* is selected, the changes are not recorded by Anti-Executable.



Adequate time required for Windows Updates must be provided while running in Maintenance Mode.

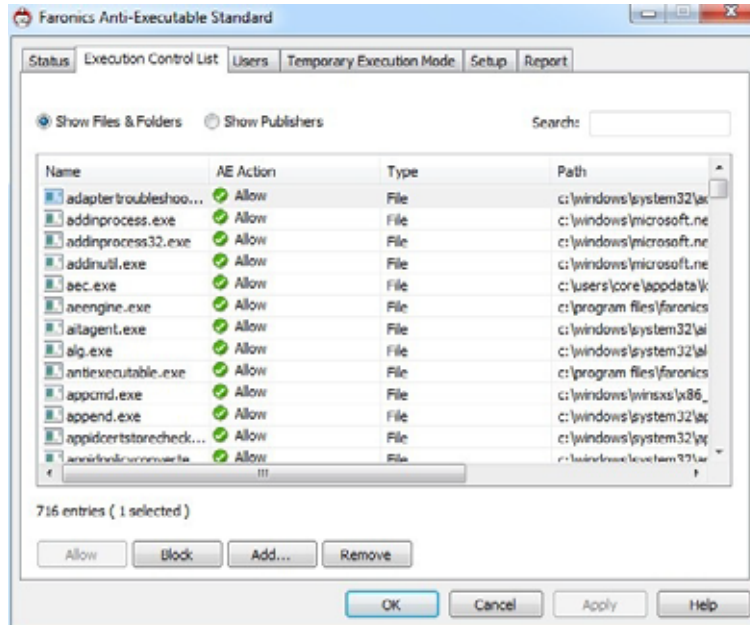


If the computer is running in Maintenance Mode, and the Protection is disabled, the changes made to the workstation during Maintenance Mode are not added to the Execution Control List.



## Execution Control List Tab

The Execution Control List tab allows you to specify whether the items must be Allowed or Blocked.



Complete the following steps to specify the Anti-Executable behavior:

1. Select Show Files & Folders or Show Publishers.
2. If Show Files & Folders is selected, the following columns are displayed:
  - > Name
  - > AE Action
  - > Source
  - > Trusted
  - > Type
  - > Path
  - > Added Date
  - > Comment
3. Click *Add* to add Files or Folders to the Central Control List and Execution Control List. Select an item and click *Remove* to remove from the Execution Control List. Select an item and click *Allow* or *Block*.
4. Click *Apply*. Click *OK*.



## Users Tab

Anti-Executable uses Windows user accounts to determine the features available to users. There are two types of Anti-Executable users:

- Administrator User — Can manage Execution Control List, Users, and Setup and can uninstall Anti-Executable.
- Trusted User — Can configure Anti-Executable, and set the Execution Control List. They are prohibited from uninstalling Anti-Executable and cannot manage Users or Setup.

By default, the Windows user account which performs the Anti-Executable installation becomes the first Anti-Executable Administrator User. This Administrator User can then add existing Windows users to Anti-Executable.

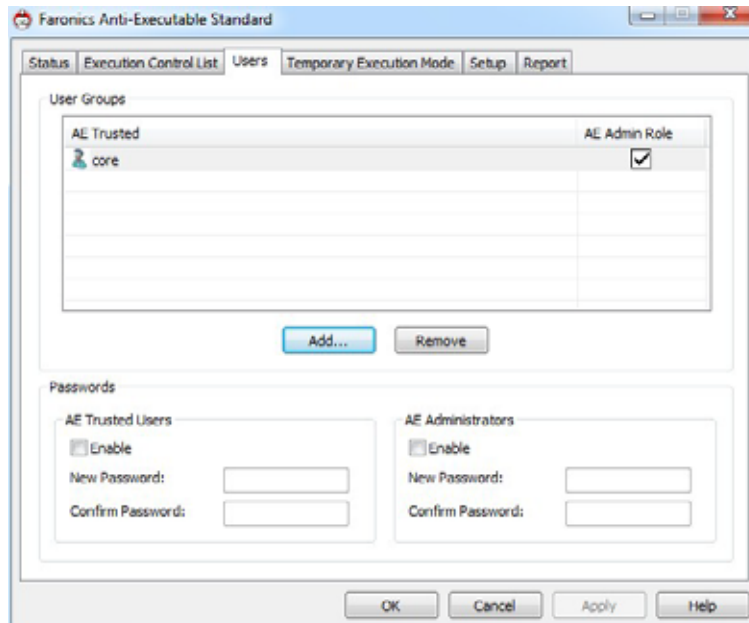
If an Anti-Executable Administrator or Trusted User attempts to open an unauthorized application while Anti-Executable is enabled, the Alert dialog will be displayed.

### Adding an Anti-Executable Administrator or Trusted User

All Anti-Executable users are existing Windows user accounts. However, all Windows user accounts do not automatically become Administrators or Trusted users. Windows user accounts that are not Administrators or Trusted Users are External users.

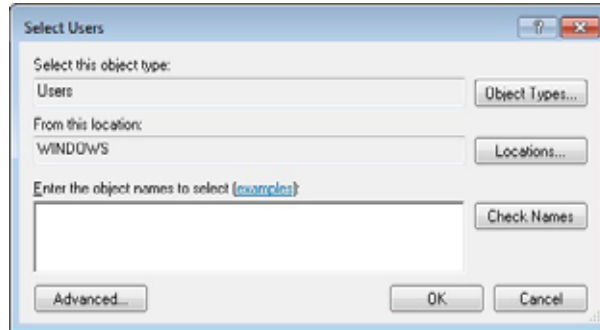
To add a user to Anti-Executable, perform the following steps:

1. Click the *Users* tab at the top of the Anti-Executable window.

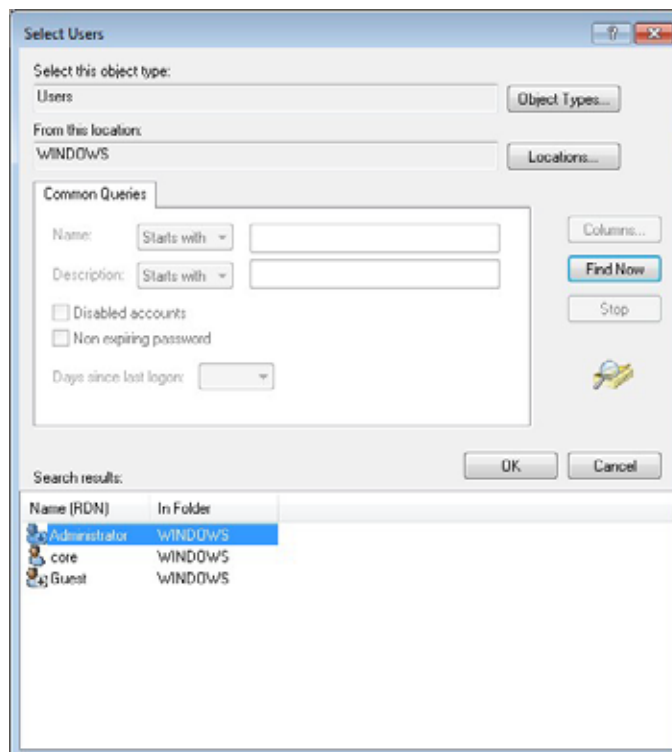




- Click *Add* to add a new user. Select the *User* icon from the list provided.



- Click *Advanced* > *Find Now* to display a list of available users. Anti-Executable administrators can add domain users (or groups) and local users (or groups). Click on a user or group to add it to Anti-Executable's list and click *OK*.



- By default, each added user is an Anti-Executable Trusted User. If the new user is to be given administrative rights, specify them as an Anti-Executable Administrator by checking the *Anti-Executable Admin Role* checkbox.

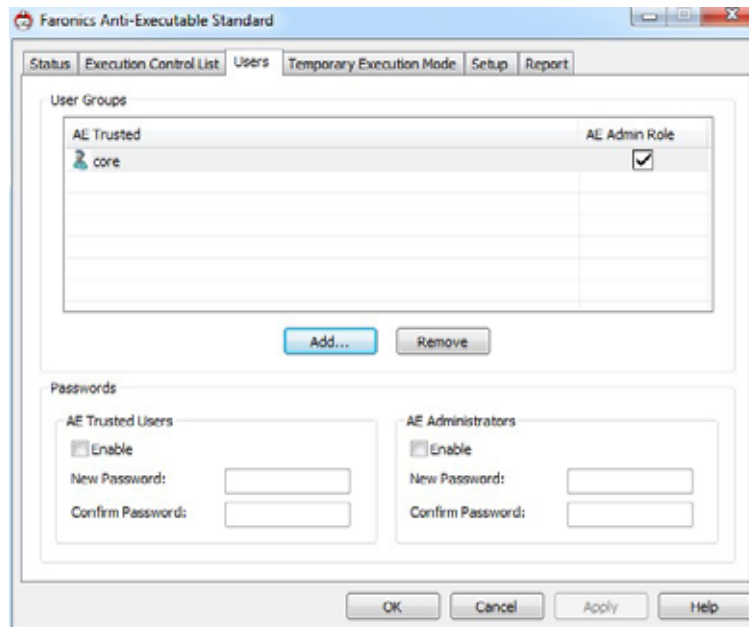


## Removing an Anti-Executable Administrator or Trusted User

Click on the *Users* tab and select the user to be removed. Click *Remove*. This does not remove the user's Windows user account. The user has now become an external user.

## Enabling Anti-Executable Passwords

As an added layer of protection, Anti-Executable can attach a password to each user group. Passwords only apply to the members of the associated groups. To specify a password, ensure the *Enable* checkbox is selected and enter the password in the *New Password* and *Confirm Password* fields. Click *Apply* to save any changes.

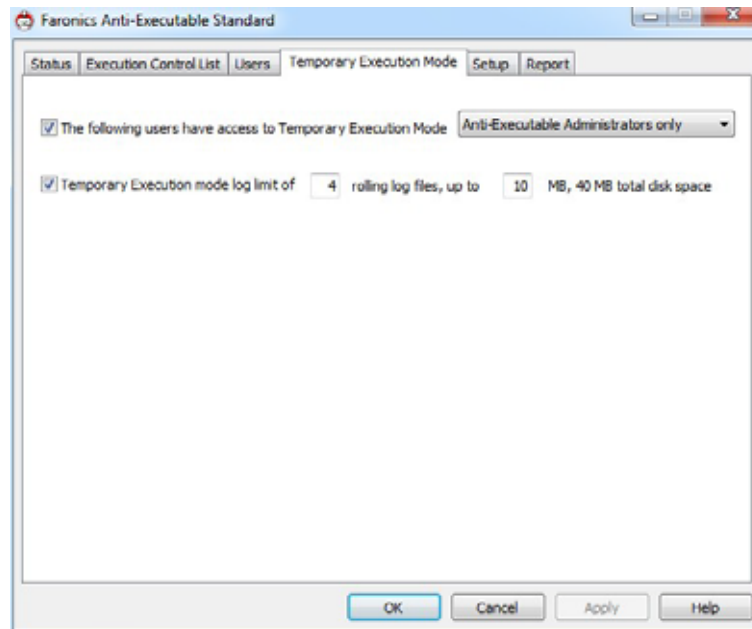




## Temporary Execution Mode Tab

Temporary Execution Mode allows users to run any executable without any action from Anti-Executable for a specified period. During this period, the user is allowed to run any executable without any restrictions. Once the Temporary Execution Mode period ends, Anti-Executable is Enabled.

The following options are available for Temporary Execution Mode:



- The following users have access to Temporary Execution Mode — To allow specific set of users to activate Temporary Execution Mode on their systems. Select All Users, Anti-Executable users or Anti-Executable Administrators only.
- Temporary Execution Mode log — To create log files during Temporary Execution Mode.
  - > Number of log files — Specify the number of log files (up to a maximum of 10). The logging information is stored in the files serially. For example, if there are 3 files A,B and C, Faronics Anti-Executable first writes the error logs to file A. Once file A is full, it starts writing to file B and finally file C. Once file C is full, the data in file A is erased and new logging data is written to it.
  - > File size — Select the size of each file in MB. There can be a maximum of 10 log files of up to 10 MB each i.e total 100 MB.



## Activating or Deactivating Temporary Execution Mode

- Activating Temporary Execution Mode: Right-click on the Anti-Executable icon in the System Tray and select *Temporary Execution Mode > x minutes* (select up to 60 minutes, 24 hours or 7 days)
- Deactivating Temporary Execution Mode: Right-click on the Anti-Executable icon in the System Tray and select *Temporary Execution Mode > Disable*

The following icon is displayed in the System Tray at the workstation when Temporary Execution Mode is activated:



A message appears at the workstation 3 minutes before the Temporary Execution Mode ends.

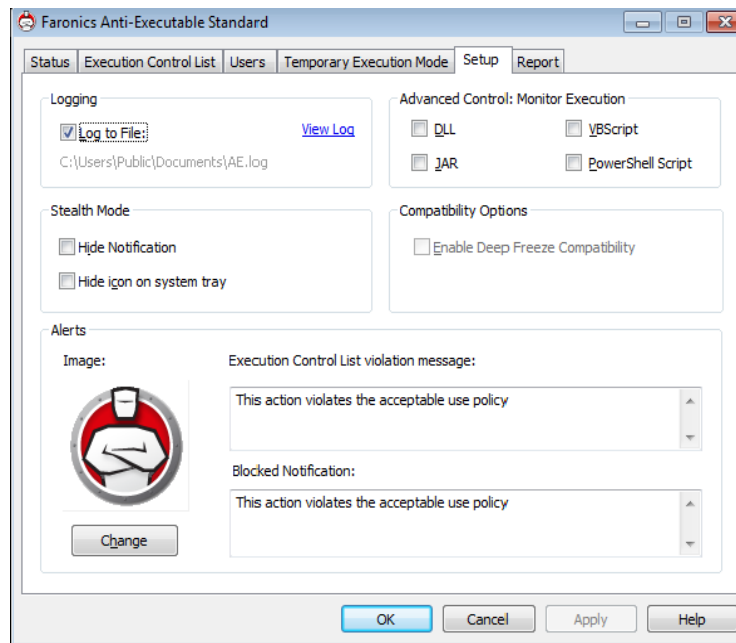


Automatic Windows Updates will be disabled during Temporary Execution Mode.



## Setup Tab

The Anti-Executable Administrator can setup Logging to log various user actions, apply various settings for Stealth Mode, set up Alerts and enable Compatibility Options.



### Setting Event Logging in Anti-Executable

Select *Log to File* to log events to the log file.

### Monitor DLL Execution

Select the *Monitor DLL Execution* checkbox to monitor DLLs. If this checkbox is not selected, the DLLs will not be monitored even if they have been added to the Execution Control List.



If a selected *Monitor DLL Execution* checkbox is cleared, it displays a message *Do you want to delete all the DLL entries in the Execution Control List?* Click *Yes* to delete all the DLL entries and *No* to retain the entries.



## Monitor JAR Execution

Select the *Monitor JAR Execution* checkbox to monitor JAR files. If this checkbox is not selected, the JAR files will not be monitored even if they have been added to the Execution Control List.

## Monitor VBScript Execution

Select the *Monitor VBScript Execution* checkbox to monitor VBScript files. If this checkbox is not selected, the VBScript files will not be monitored even if they have been added to the Execution Control List.

## Monitor PowerShell Script Execution

Select the *Monitor PowerShell Execution* checkbox to monitor PowerShell files. If this checkbox is not selected, the PowerShell files will not be monitored even if they have been added to the Execution Control List.

## Anti-Executable Stealth Functionality

Stealth Mode is a group of options that control visual indication of Anti-Executable's presence on a system. Stealth Mode gives the option to the Administrator to hide the Anti-Executable icon in the Windows system tray and prevent the Alert from being displayed.

When Anti-Executable is not visible in the system tray, Administrators and Trusted users can launch Anti-Executable through the Ctrl+Alt+Shift+F10 hotkey.

Stealth functionality has the following options:

- Hide Notification — Prevents the Alert from being displayed.
- Hide icon on system tray — Hides the Anti-Executable icon in the system tray.

## Compatibility Options

Anti-Executable is compatible with Deep Freeze.

### Deep Freeze Compatibility



This feature is applicable only when Deep Freeze and Anti-Executable are installed on the computer.

The Deep Freeze Compatibility feature allows the Administrator to synchronize the Maintenance Modes of Deep Freeze and Anti-Executable.



By enabling the *Enable Deep Freeze Compatibility* checkbox, Anti-Executable will automatically enter Maintenance Mode when Deep Freeze enters Maintenance Mode (Deep Freeze reboots *Thawed* in Maintenance Mode).

By setting both Deep-Freeze and Anti-Executable to be in Maintenance Mode at the same time, any executable that is added to the computer, will not only be added to the Execution Control List, but will be retained by Deep Freeze once it freezes back the computer after the Maintenance Mode ends.

Anti-Executable will stay in Maintenance Mode until shortly before the Maintenance Mode of Deep Freeze ends. Once Anti-Executable exits Maintenance Mode, it will add any new or updated executable files to the Execution Control List. When Deep Freeze exits its Maintenance Mode, it will reboot the computer *Frozen* with the updated Execution Control List.



It is not possible to set Anti-Executable to Maintenance Mode if *Deep Freeze Compatibility* is enabled and Deep Freeze status is *Frozen*. This is because, changes made to the computer will be lost on reboot.

If Anti-Executable is disabled, and Deep Freeze enters Maintenance Mode, Anti-Executable will continue to be disabled.

Maintenance periods triggered by Deep Freeze will take precedence over any other Maintenance periods scheduled on Anti-Executable.

For more information on Deep Freeze, visit <http://www.faronics.com/deepfreeze>.

## Customizing Alerts

Anti-Executable Administrators can use the Alerts pane to specify the message and an image that appears whenever a user attempts to run an unauthorized executable. The following messages can be set:

- Execution Control List violation message
- Blocked notification message

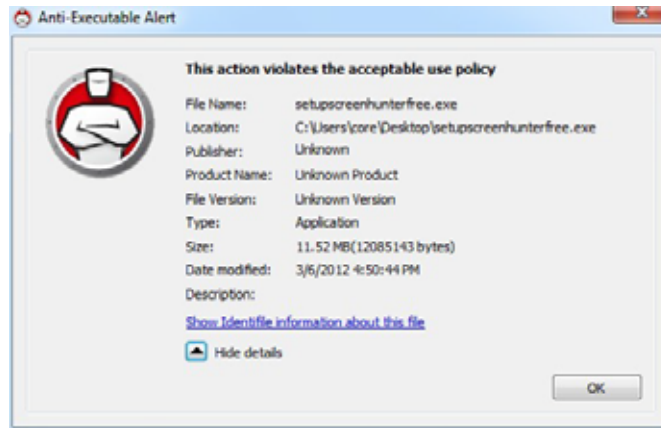
Enter a message or use the default message provided. This text will be displayed in all alert dialogs whenever a user attempts to run an unauthorized executable.

Choose a bitmap image by clicking Change and browsing to a file. The selected image will accompany the text in the alert dialog. Alert messages display the following information:

- Executable location
- Executable name
- Default or customized image
- Default or customized message



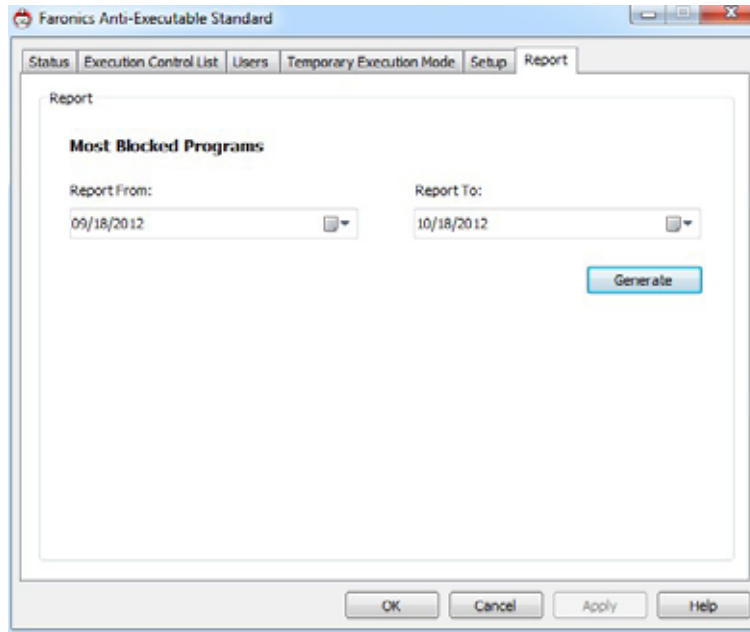
A sample alert dialog is displayed below:





## Report Tab

The Report Tab allows you to generate a report of Most Blocked Programs for a selected period.



Complete the following steps to generate the report:

1. Click the *Report* tab.
2. Select the *Report from* date.
3. Select the *Report to* date.
4. Click *Generate*.

The browser is launched and the report is displayed.



# Uninstalling Anti-Executable

## Topics

---

[Uninstalling Anti-Executable Standard](#)



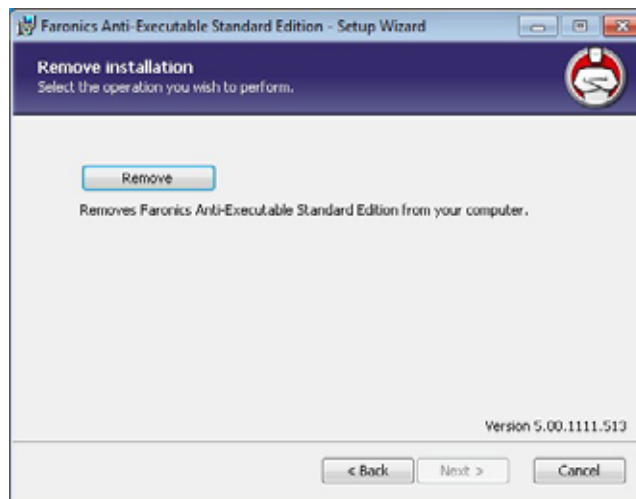
## Uninstalling Anti-Executable Standard

Anti-Executable can be removed by double-clicking on *.msi* installer file. The Setup Wizard is displayed:

1. Click *Next* to begin the uninstall.

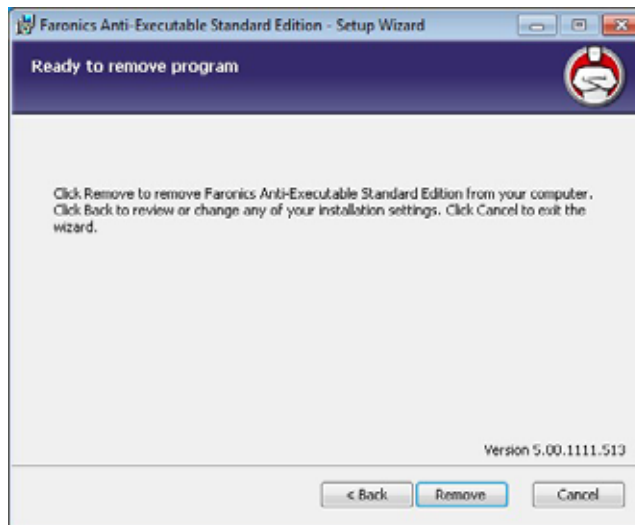


2. Click *Remove* followed by *Next*.





3. Click *Remove*.



4. Click *Finish*.

