

Faronics

DEEPFREEZE™

ABSOLUTE Workstation Integrity

Deep Freeze Action Files - VNC Example

TECHNICAL WHITEPAPER

Last modified: May 27, 2009

Faronics

Toll Free Tel: 800-943-6422

Toll Free Fax: 800-943-6488

International Tel: +1 604-637-3333

International Fax: +1 604-637-8188

www.faronics.com

© 1999 - 2009 Faronics Corporation. All rights reserved. Faronics, Deep Freeze, Faronics Core Console, Faronics Anti-Executable, Faronics Device Filter, Faronics Power Save, Faronics Insight, Faronics System Profiler, and WINSelect are trademarks and/or registered trademarks of Faronics Corporation. All other company and product names are trademarks of their respective owners.



Introduction

This document details the process of using a Deep Freeze Action file to integrate a third-party VNC client into the Deep Freeze Enterprise Console

Requirements:

Deep Freeze 6.3, and a previously installed VNC client/server package.

Deep Freeze Action Files

A Deep Freeze Action File is an XML file that allows end users to define additional functionality into the Deep Freeze Enterprise Console. An Action File defines a method for calling an external batch file and passing some information (e.g. machine IP addresses, computer names) to the batch file or script.

Action Files simply call an external program or script; therefore, any scripting language that can be called from the command line can be used, in this example DOS style batch files are used to initiate a VNC session via the Deep Freeze Enterprise Console.

Action File Example

The structure of the Deep Freeze Action file that we will be using is shown below. The name of this file is not critical as the console will parse the file regardless of the name that it is saved under. For purposes of this document, the file will be saved as *VNC.XML*

```
<?xml version="1.0" encoding="UTF-8"?>
<CUSTOMDEFINEDACTIONS>
  <A1>
    <CAPTION>
      <ENGLISH>Connect with VNC</ENGLISH>
      <GERMAN>Connect with VNC</GERMAN>
      <JAPANESE>Connect with VNC</JAPANESE>
      <SPANISH>Connect with VNC</SPANISH>
      <FRENCH>Connect with VNC</FRENCH>
    </CAPTION>
    <FILEMENU>y</FILEMENU>
    <POPUPMENU>y</POPUPMENU>
    <SUBITEMS>
    </SUBITEMS>
    <PARAMS>
    </PARAMS>
    <EXECUTE>"C:\Program Files\RealVNC\VNC4\CREATE.BAT" %%IP%% </EXECUTE>
    <WORKDIR>c:\windows</WORKDIR>
  </A1>
</CUSTOMDEFINEDACTIONS>
```

The action file will require the two supporting files to be created:

create.bat

```
@ECHO OFF
@CD "C:\Program Files\RealVNC\VNC4"
@ERASE TEMP.VNC
@ERASE FAR_VNC.TMP
@ECHO [Connection] >FAR_VNC.TMP
@ECHO Host=%1 >>FAR_VNC.TMP
@COPY FAR_VNC.TMP+TEMPLATE.VNC TEMP.VNC
@"C:\Program Files\RealVNC\VNC4\VNCVIEWER.EXE" "C:\Program Files\RealVNC\VNC4\TEMP.VNC"
```

template.vnc

```
Password=dbd83cfd727a1458
[Options]
UseLocalCursor=1
UseDesktopResize=1
FullScreen=0
FullColour=1
LowColourLevel=1
PreferredEncoding=hextile
AutoSelect=1
Shared=0
SendPtrEvents=1
SendKeyEvents=1
SendCutText=1
AcceptCutText=1
DisableWinKeys=1
Emulate3=0
PointerEventInterval=0
Monitor=\\. \DISPLAY1
MenuKey=F8
AutoReconnect=1
```

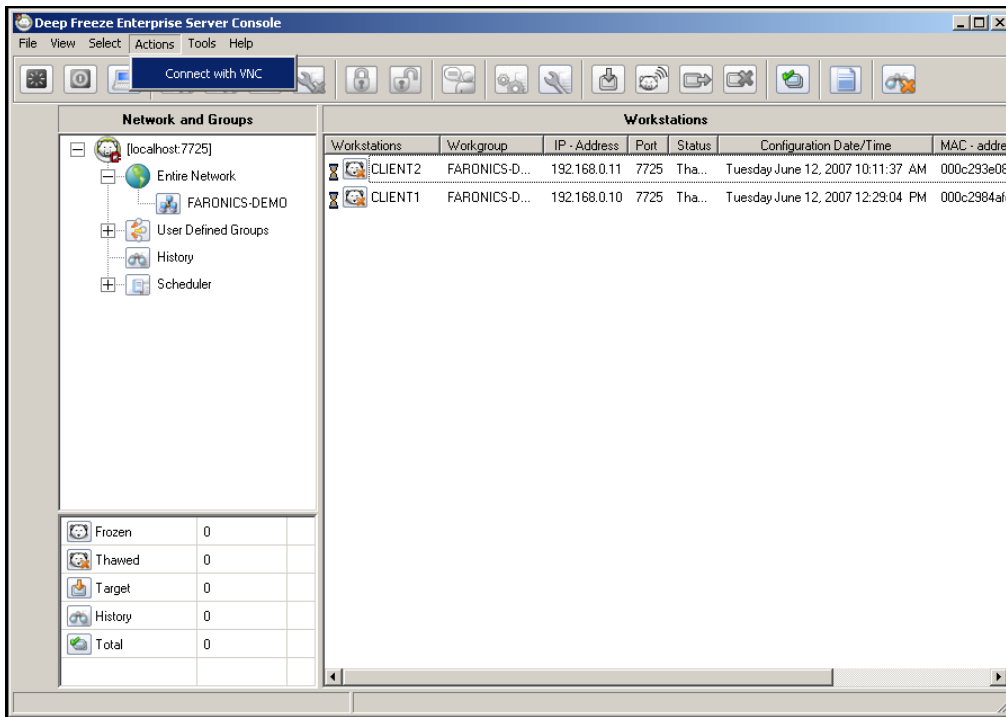
Note that the *template.vnc* file is currently configured for a password of *password*. To insert your password simply replace the existing password hash with the appropriate password hash for one of your workstations.

Action File Deployment

The XML file must be placed in the *C:\Program Files\Faronics\Deep Freeze Enterprise* folder. If the Deep Freeze Enterprise Console has been moved, the XML file must be in the same directory as the Enterprise Console.

The two supporting files, (*create.bat* and *template.vnc*) need to be placed in the VNC viewer directory. In this example the folder is *C:\Program Files\RealVNC\VNC4*.

Once placed in the appropriate folder, the Console can be restarted and the *Action* menu will be shown, with the *connect via VNC* option available.



Deep Freeze Action File Structure

The following XML schema outlines the custom defined actions available to the user. Multiple XML files can be saved based on the number of commands required. Each file must be saved to the Console folder and the read only attribute must not be selected.

Any changes made must be accompanied by a restart of the Deep Freeze Console in order to take effect.

<?xml version="1.0" encoding="UTF-8"?>	All commands are case insensitive
<CUSTOMDEFINEDACTIONS>	
<A1>	
<CAPTION>	Text that appears in file menu or submenu
<ENGLISH>Caption</ENGLISH>	Text in various languages
<GERMAN>Caption</GERMAN>	Text in various languages
<JAPANESE>Caption</JAPANESE>	Text in various languages
<SPANISH>Caption</SPANISH>	Text in various languages
<FRENCH>Caption</FRENCH>	Text in various languages
</CAPTION>	
<FILEMENU>y</FILEMENU>	Defines if this action will be in file menu
<POPMENU>y</POPMENU>	Defines if this action will be in right-click popup menu
<SILENT>y</SILENT>	Defines if user will be asked a confirmation message
<SUBITEMS>	In SUBITEMS ITEMS that are child to this ITEM can be defined

</SUBITEMS>	If SUBITEMS are defined then action for this items will be ignored
<SYNC>y</SYNC>	Specifies if command will be executed synchronously or asynchronously
<PARAMS>	Choosing this action prompts user to enter custom parameters
<PASSWORD>	Name on parameter
<VAR>%PARAM1%</VAR>	Name of variable which will be used in EXECUTE
<CAPTION>	Text which will appear in file menu or submenu
<ENGLISH>Param Caption</ENGLISH>	Text in various languages
<GERMAN>Param Caption</GERMAN>	Text in various languages
<JAPANESE>Param Caption</JAPANESE>	Text in various languages
<SPANISH>Param Caption</SPANISH>	Text in various languages
<FRENCH>Param Caption</FRENCH>	Text in various languages
</CAPTION>	
</PASSWORD>	
<USERNAME>	
<VAR>%USERNAME%</VAR>	
<CAPTION>	
<ENGLISH>USERNAME Param (ENGLISH)</ENGLISH>	
<GERMAN>USERNAME Param (GERMAN)</GERMAN>	
<JAPANESE>USERNAME Param (JAPANESE)</JAPANESE>	
<SPANISH>USERNAME Param (SPANISH)</SPANISH>	
<FRENCH>USERNAME Param (FRENCH)</FRENCH>	
</CAPTION>	
</USERNAME>	
</PARAMS>	
<LOG>	Defines behavior of the log file
<APPEND>y</APPEND>	Defines if log file will be appended or created new
<FILENAME>c:\a1command.log</FILENAME>	Defines filename
</LOG>	
<EXECUTE>c:\windows\vpn.exe %IP% %USERNAME% %PASSWORD% %%WKSNAME%%</EXECUTE>	Defines command which will be executed. Here PARAMS or/and console items can be used
<WORKDIR>c:\windows</WORKDIR>	Defines working directory
</A1>	
</CUSTOMDEFINEDACTIONS>	

Console Parameters

The following console parameters can be passed to the executed application or script through the Enterprise Console:

Console Item	
%%WKSNAME%%	Workstation name
%%DOMAIN%%	Workstation domain
%%IP%%	Workstation IP
%%PORT%%	Workstation port
%%STATUS%%	Workstation status
%%CFGDATETIME%%	Workstation configuration date/time
%%MAC%%	Workstation mac address
%%DFVERSION%%	Workstation Deep Freeze version