

FARONICS

DEEPFREEZE™

ABSOLUTE Workstation Integrity

Deep Freeze - Master Images and Rapid Deployment

TECHNICAL PAPER

Last modified: June, 2012

Faronics

Toll Free Tel: 800-943-6422

Toll Free Fax: 800-943-6488

International Tel: +1 604-637-3333

International Fax: +1 604-637-8188

www.faronics.com

© 1999 - 2012 Faronics Corporation. All rights reserved. Faronics, Deep Freeze, Faronics Core Console, Faronics Anti-Executable, Faronics Device Filter, Faronics Power Save, Faronics Insight, Faronics System Profiler, and WINSelect are trademarks and/or registered trademarks of Faronics Corporation. All other company and product names are trademarks of their respective owners.

Introduction

Imaging workstations is one of the quickest ways to deploy standard workstation software to multiple workstations.

This white paper offers best practice guidelines regarding deployment of freshly imaged workstations and rapid deployment of Deep Freeze over the network.

Deep Freeze Silent Install System

Deep Freeze Standard and Enterprise can be deployed over a network using the Silent Install System.

Any deployment utility that allows execution of a command line on a remote workstation can implement the Silent Install System. After the Silent Install is complete, the workstation immediately restarts.

The command line has the following options:

Syntax	Description
[/Install]	Install Deep Freeze using installation file
[/Install /Seed]	Install only the specified Workstation Seed file
[/Uninstall]	Uninstall Deep Freeze
[/Uninstall /Seed]	Uninstall Deep Freeze and leave the Workstation Seed installed
[/PW=password]	Set a password during installation
[/AllowTimeChange]	Allow system clock to be changed
[/Freeze=C,D,...]	Freeze only drives listed (Thaw all others)
[/Thaw=C,D,...]	Thaw only drives listed (Freeze all others)
[/USB]	Exempt external USB hard disks from protection
[/FireWire]	Exempt external FireWire hard disks from protection

Example Command Line: DFWks.exe /Install /Freeze=C /PW=password

In the example, the Deep Freeze installation program file is named *DFWks.exe*. Only the C: drive will be Frozen. Any other drives on the workstation will be Thawed. If the workstation only has a C: drive, the [/Freeze] switch can be omitted. A password (password) will be created. After executing the command, Deep Freeze will install and the workstation will restart Frozen and ready to use.

The Silent Install System does not work without the [/Install] OR [/Uninstall] switch.

Deep Freeze must be in a Thawed state before [/Uninstall] can be used.



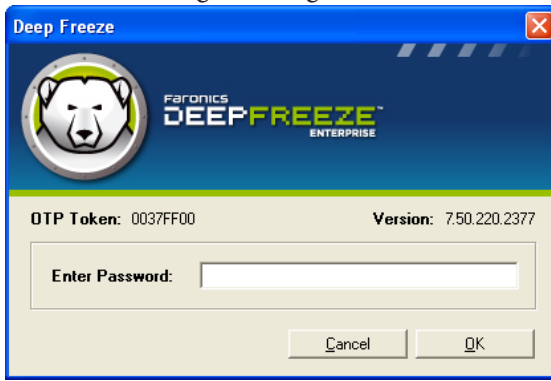
To run the configuration command line options, *Disable Command Line options* on the *Miscellaneous* tab must be cleared.

Creating a Master Image with Deep Freeze

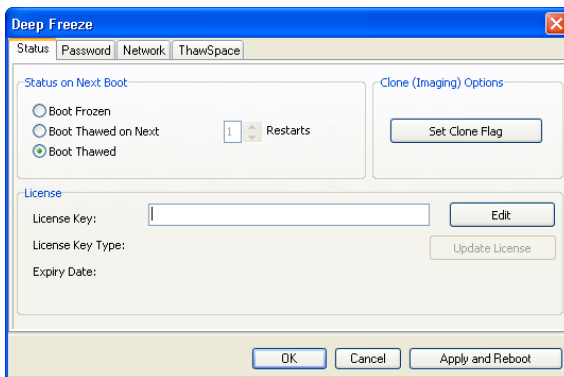
Deep Freeze Standard and Enterprise have been designed to work with all major imaging and desktop management software. Use either an Attended Install or the Silent Install System to install Deep Freeze on a master image.

Deep Freeze must be in a Thawed state before finalizing a master image. The workstation requires an additional restart into a Thawed state after imaging for Deep Freeze to correctly detect the changes in disk configuration. Complete the following steps to create a master image for install:

1. Install all the software that is to be included in the master image. If Deep Freeze is not the last application installed, ensure that all other products are installed while the computer is in Thawed state.
2. With the computer in Thawed state, press *CTRL + ALT + SHIFT + F6* to bring up Deep Freeze's logon dialog, shown below.



3. Enter the administrator password and click *OK*.
4. To return to the Frozen state after imaging is complete, set Deep Freeze to Boot Thawed on Next 'n' Restarts ('n' being the number of restarts required).
5. Click *Apply and Reboot* and the message *Do you want to reboot now?* is displayed. Click *No*.



5. To prepare for creating a master image, click *Set Clone Flag* and click *Apply and Reboot*. To take the image immediately, click *Yes* when prompted to reboot the computer. If you require the image to be sysprepped prior to imaging, click *No* when prompted to reboot the computer and begin the sysprep process immediately.
6. After reboot, capture the image prior to allowing the computer to boot into Windows.

If the workstations are imaged in an unattended mode, steps should be taken to ensure they are restarted to allow the configuration to update.

Creating a Master Image with Deep Freeze Seed (Enterprise Only)

An alternative to creating a Master Image with a full Deep Freeze installation is using the Deep Freeze Workstation Seed. The Workstation Seed is used to Target Install Deep Freeze from the Enterprise Console.

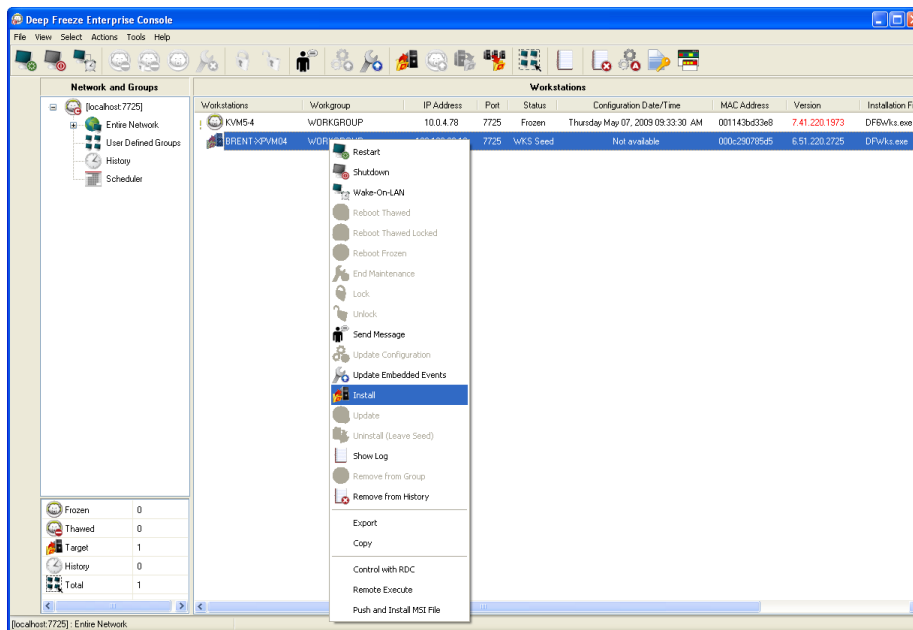
The advantage of using this method is that no extra steps have to be taken. Create the Master Image and install the Workstation Seed just before finalizing the image. No additional reboots are necessary. Then use the Enterprise Console to perform Target installations of Deep Freeze on the workstations.

Target Install Using Deep Freeze Enterprise

The Enterprise Console can remotely install a Full Workstation Installation on any workstation that has the Workstation Seed installed.

Complete the following steps to Install Deep Freeze on a workstation using the Enterprise Console.

1. Right-click on one or multiple workstations and select *Install*.



2. A dialog box appears, asking if the installation should proceed. Click *OK*.
A dialog box appears to select the file to be installed on the remote workstation.
3. Select the installation file to use and click *Open*.
4. The workstation installs Deep Freeze and restarts.
5. Once the installation is complete, the Enterprise Console reflects the change in the workstation's status, and shows it as *Frozen*.

Creating and configuring the Workstation installation file is beyond the scope of this white paper. For more information please consult the Deep Freeze User Guide.